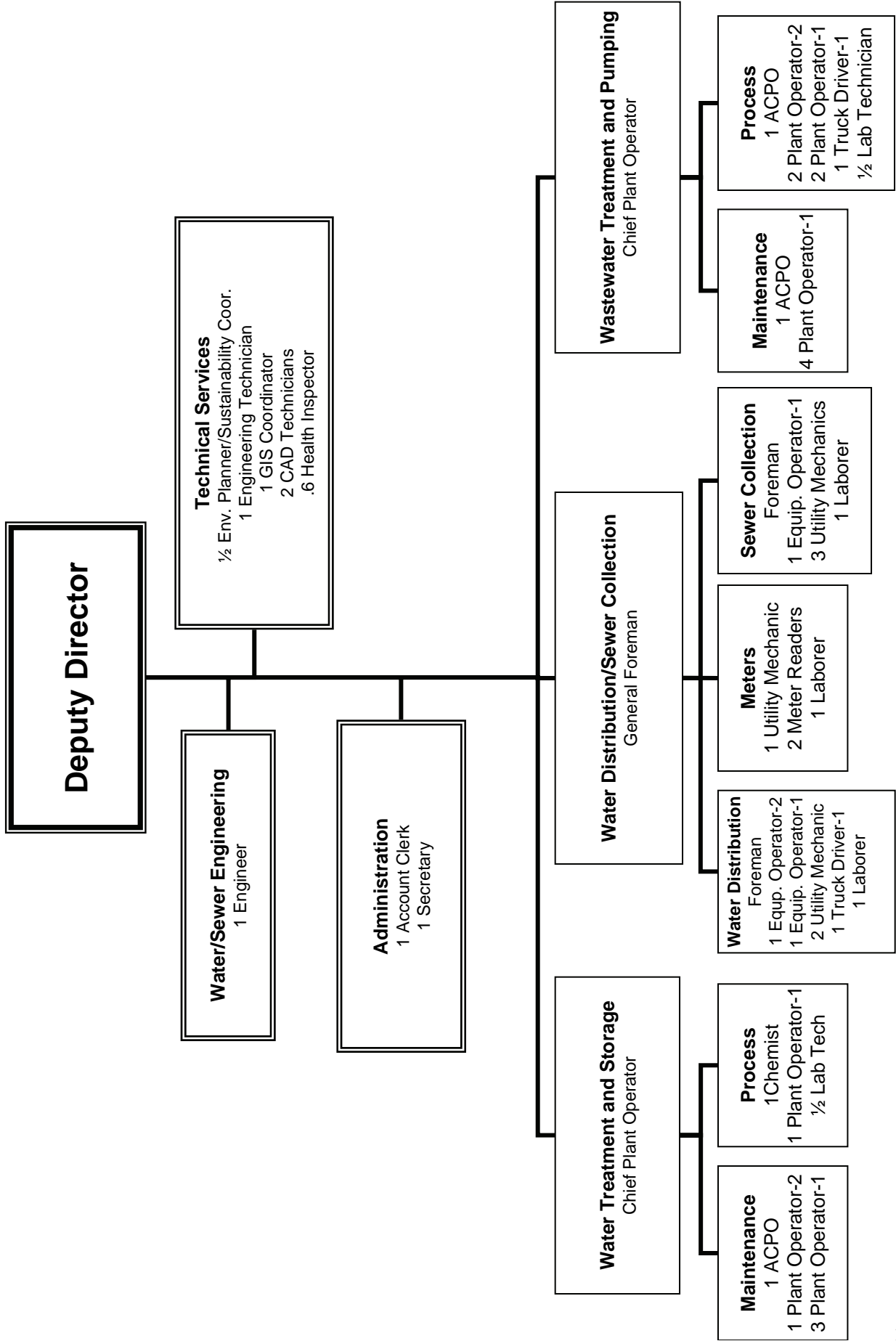


Water and Sewer Divisions



POSITION SUMMARY SCHEDULE

| Enterprise Funds-Water and Sewer | | | |
|---|-----------------|-----------------|-----------------|
| Positions- Full Time | FY 07-08 | FY 08-09 | FY 09-10 |
| Deputy PW Director | 1 | 1 | 1 |
| Engineer | 1 | 1 | 1 |
| Envir. Planner/Sustainability Coord. | 0.5 | 0.5 | 0.5 |
| Engineering Technician | 1 | 1 | 1 |
| Health Inspector | 0.6 | 0.6 | 0.6 |
| GIS Coordinator | 1 | 1 | 1 |
| CAD Technician | 2 | 2 | 2 |
| General Foreman | 1 | 1 | 1 |
| Chief Plant Operator | 2 | 2 | 2 |
| Asst Chief Plant Operator | 3 | 3 | 3 |
| Water Foreman | 1 | 1 | 1 |
| Sewer Foreman | 1 | 1 | 1 |
| Chemist | 1 | 1 | 1 |
| Laboratory Technician | 1 | 1 | 1 |
| Plant Operator 2 | 3 | 3 | 3 |
| Plant Operator 1 | 10 | 10 | 10 |
| Equipment Operator II | 1 | 1 | 1 |
| Equipment Operator I | 2 | 2 | 2 |
| Utility Mechanic | 6 | 6 | 6 |
| Meter Reader | 2 | 2 | 2 |
| Truck Driver 1 | 2 | 2 | 2 |
| Laborer | 3 | 3 | 3 |
| Account Clerk | 1 | 1 | 1 |
| Secretary | 1 | 1 | 1 |
| Total | 48.1 | 48.1 | 48.1 |
| Positions- Part Time | FY 07-08 | FY 08-09 | FY 09-10 |
| Laborer | 2 | 2 | 2 |
| Meter Repair Technician | 0 | 0 | 0 |
| Total | 2 | 2 | 2 |



WATER DIVISION

MISSION:

The Portsmouth Water Division strives to provide quality drinking water and an adequate supply of water for fire protection. Through professionalism, expertise, and efficient work practices, the division seeks to maintain and develop a sound infrastructure using the latest available cost effective treatment technology and production, storage, and distribution methods. The division is committed to high environmental standards and controls through respect for natural resources and adaptation to the built environment.

BUDGET COMMENTS:

The operating and maintenance portion of the budget reflects level funding from last year's budget. The FY10 budget resolution of \$6,376,063 is a 9.7% increase. The increase in the overall budget is attributable to capital asset activity and the debt related interest associated with the Madbury Treatment Plant and the Raw Water Management project.

The City is aggressively pursuing the American Recovery and Reinvestment Act (*Economic Stimulus Package*) funding for the treatment plant and raw water management project through the legislative delegation and working closely with the Department of Environmental Services.

The City has continued the implementation of the Automated Meter Reading system (AMR) scheduled to be completed near the end of FY09. The new AMR system will facilitate the transition to billing all water and sewer customers on a monthly basis instead of every four months. The Division will also benefit by collecting demand information on a more "real time" basis which will assist with the implementation of sustainable measures to protect our resources.

BUDGET SUMMARY OF EXPENDITURES:

| WATER DEPARTMENT | FY08 BUDGET | FY08 ACTUAL | FY09 BUDGET | FY10 DEPARTMENT REQUEST | FY10 CITY MANAGER RECOMMENDED | FY10 CITY COUNCIL APPROVED |
|-----------------------------------|------------------|------------------|------------------|-------------------------------|-------------------------------------|----------------------------------|
| SALARIES | 1,160,880 | 1,114,114 | 1,162,985 | 1,124,330 | 1,124,330 | - |
| PART-TIME SALARIES | 14,518 | 7,080 | 14,518 | 14,518 | 14,518 | - |
| OVERTIME | 116,468 | 92,046 | 100,000 | 100,000 | 100,000 | - |
| HEALTH INSURANCE | 343,674 | 310,490 | 365,500 | 403,183 | 403,183 | - |
| DENTAL INSURANCE | 22,495 | 21,369 | 23,500 | 24,137 | 24,137 | - |
| LEAVE AT TERMINATION | 40,600 | (77) | 30,600 | 30,600 | 30,600 | - |
| WORKERS' COMPENSATION | 20,734 | 20,734 | 27,333 | 21,969 | 21,969 | - |
| OTHER FRINGE BENEFITS | 204,589 | 238,950 | 213,922 | 256,003 | 256,003 | - |
| COLLECTIVE BARGAINING CONTINGENCY | 445 | - | 54,180 | 89,070 | 89,070 | - |
| <i>Contractual Obligations</i> | 1,924,403 | 1,804,706 | 1,992,538 | 2,063,810 | 2,063,810 | - |
| CHEMICALS | 233,150 | 242,257 | 290,000 | 318,600 | 318,600 | - |
| REPAIRS TO EQUIP/BLDGS | 160,460 | 123,383 | 183,460 | 178,460 | 178,460 | - |
| UTILITIES | 493,930 | 383,173 | 499,230 | 474,230 | 474,230 | - |
| ADMINISTRATIVE OVERHEAD | 458,922 | 458,922 | 463,691 | 470,604 | 470,604 | - |
| SLUDGE/GRIT REMOVAL | 75,000 | 25,752 | 75,000 | 50,000 | 50,000 | - |
| PROF CONTRACTED SERVICES | 289,652 | 134,890 | 308,652 | 255,402 | 255,402 | - |
| INTEREST/FEES ON DEBT | 194,060 | 186,436 | 617,124 | 1,103,488 | 1,103,488 | - |
| DEPRECIATION | 667,938 | 585,529 | 675,753 | 751,944 | 751,944 | - |
| EQUIPMENT | 166,500 | 51,731 | 166,500 | 166,500 | 166,500 | - |
| OTHER NON-OPERATING | 506,121 | 395,136 | 541,601 | 543,025 | 543,025 | - |
| <i>Other Operating</i> | 3,245,733 | 2,587,208 | 3,821,011 | 4,312,253 | 4,312,253 | - |
| TOTAL | 5,170,136 | 4,391,914 | 5,813,549 | 6,376,063 | 6,376,063 | - |

WATER RATE

The City of Portsmouth utilizes a two-tier inclining rate block structure for billing water consumption. The first tier rate is assessed for the first 10 units of water consumed per month and the second tier rate is assessed for water consumption over 10 units. This method of billing provides an equitable method of financing of water operations. The large volume users have a greater impact on system production capacities, storage volume and pipe sizing.

For FY10, the proposed water rate for the first 10 units of water consumed per month will increase from \$2.40 to \$3.30 per unit. The rate for consumption over 10 units per month will be increased from \$2.85 to \$3.90 per unit.

Proposed Water Rate

One unit of water equals 100 cubic feet or 748 gallons.

| | Current FY09 Rate (per unit) | Proposed FY10 Rate (per unit) |
|--|------------------------------------|-------------------------------------|
| First 10 Units of Water Consumption per month | \$2.40 | \$3.30 |
| Over 10 Units of Water Consumption per month | \$2.85 | \$3.90 |
| All Irrigation Meter Consumption | \$2.85 | \$3.90 |

80% of all the residential customers fall into the 10 units or less tier.

The proposed water rate will raise the average residential customer's water bill by approximately \$9.00 per month as depicted in the table below.

| FY10 Proposed Rate Increase Average Residential Customer (Monthly) Based on 250 gallons per day usage | | | |
|---|---------------|----------------|--------|
| | Current Rates | Proposed Rates | Change |
| Monthly Consumption in units <small>(1 unit = 100 cf = 748 gallons)</small> | 10 | 10 | |
| First Tier User Rate | \$2.40 | \$3.30 | \$0.90 |
| Minimum Charge; 5/8 " meter | \$4.95 | \$4.95 | \$0.00 |
| Water User Charge | \$24.00 | \$33.00 | \$9.00 |
| Monthly Water Usage Billing | \$28.95 | \$37.95 | \$9.00 |

The minimum charge rate for FY10 will remain the same and is based on the service meter size as listed in the table below.

| Minimum Water Charge | |
|----------------------|--------------|
| Meter Size | Monthly Rate |
| 5/8" | \$4.95 |
| 3/4" | \$4.95 |
| 1" | \$8.27 |
| 1 1/2" | \$14.25 |
| 2" | \$22.91 |
| 3" | \$36.26 |
| 4" | \$68.74 |
| 6" | \$120.27 |
| 8" | \$168.01 |
| 10" | \$252.02 |

BUDGET SUMMARY-WATER DIVISION

The Water Division prepares its budget using an accrual basis of accounting represented in the first table "Budget Resolution" The cash requirements/rate model table represents the cash requirements for the FY10 and used to calculate the user rate.

Budget Resolution (Accrual Basis of Accounting)

| Budget for Resolution | FY08 Budget | FY08 Actual | FY09 Budget | Proposed FY10 Budget |
|------------------------------------|------------------|------------------|------------------|----------------------|
| Operations and Maintenance | 4,098,638 | 3,568,217 | 4,311,172 | 4,311,131 |
| Stock Materials | 43,000 | 0 | 43,000 | 43,000 |
| Depreciation | 667,938 | 585,529 | 675,753 | 751,944 |
| Interest/Fees on Debt | 194,060 | 186,436 | 617,124 | 1,103,488 |
| Equipment and Minor Capital Outlay | 166,500 | 51,731 | 166,500 | 166,500 |
| Budget Resolution | 5,170,136 | 4,391,914 | 5,813,549 | 6,376,063 |

Cash Requirements/Rate Model

| Adjustment from Budget to Cash Requirements | | | | |
|---|------------------|------------------|------------------|------------------|
| | FY08 | FY08 Actual | FY09 | Proposed FY10 |
| Budget Resolution | 5,170,136 | 4,391,914 | 5,813,549 | 6,376,063 |
| Capital Projects, Vehicle Replacement | 1,298,000 | 1,298,000 | 1,314,000 | 2,320,000 |
| Inventory | 150,000 | 9,346 | 150,000 | 100,000 |
| Principal Debt | 327,528 | 327,528 | 532,528 | 482,528 |
| less: Accrued Interest | 0 | 0 | 0 | (375,653) |
| less: Depreciation | (667,938) | (585,529) | (675,753) | (751,944) |
| less: Stock Materials | (43,000) | 0 | (43,000) | (43,000) |
| Cash Requirements | 6,234,726 | 5,441,258 | 7,091,324 | 8,107,994 |

| Estimated Revenues for Cash Requirements | FY08 | FY08 Actual | FY09 | Proposed FY10 |
|--|------------------|------------------|------------------|------------------|
| NON-User Fees | | | | |
| Fees | 690,500 | 658,404 | 724,500 | 613,000 |
| Special Agreements | 135,115 | 135,115 | 135,115 | 135,115 |
| Minimum Charges | 698,594 | 697,553 | 699,510 | 695,830 |
| Other Financing Sources | 1,083,128 | 0 | 823,128 | 421,318 |
| Subtotal | 2,607,337 | 1,491,072 | 2,382,253 | 1,865,263 |
| To be Raised by User Rates | 3,627,389 | 3,950,187 | 4,709,071 | 6,242,731 |
| Total Revenue for Cash Requirements | 6,234,726 | 5,441,258 | 7,091,324 | 8,107,994 |

User Rate Revenues

| Anticipated Billable Units: (1 unit equals 748 gallons) | Proposed Rates | Units | \$ |
|--|----------------|-----------|------------------|
| Billable Units at | \$3.30 | 666,265 | |
| Anticipated Revenue | | | 2,198,675 |
| Billable Units at | \$3.90 | 1,025,258 | |
| Anticipated Revenue | | | 3,998,506 |
| Other Utilities | | | 45,550 |
| Total Anticipated User Revenues: | | | 6,242,731 |

CAPITAL PROJECTS:

The following two tables represent capital projects and Rolling Stock equipment identified in Capital Improvement Plan, Appendix II and Rolling Stock Appendix I.

The items in the capital outlay table will be funded through water revenues. It is anticipated that these projects will be funded through the State Revolving Loan Fund (SFR) through the State of New Hampshire.

| Capital Outlay | |
|---|----------------------|
| <u>Project Name</u> | <u>Amount</u> |
| Water Source Augmentation | 200,000 |
| Annual Water Line Replacement | 2,000,000 |
| Well Stations Improvement | 100,000 |
| Equipment, Compressor; Rolling Stock Appendix 1 | 20,000 |
| TOTAL | 2,320,000 |

The following project is anticipated to be funded through the State Revolving Loan Fund (SRF) through the State of New Hampshire. The State of New Hampshire offers loans to municipalities for approved Department of Environmental Service projects. If this project does not receive funding from the SRF program, the Division will seek other financing sources to complete this project.

| Anticipated Revolving Loan Fund/Other Financing Sources Projects | |
|---|----------------------|
| <u>Project Name</u> | <u>Amount</u> |
| Water Source Augmentation | 1,000,000 |
| TOTAL | 1,000,000 |

GOALS AND OBJECTIVES:

Goal: Improve on conjunctive approach to water management.

Objective:

- Develop cost component to conjunctive management model
- Continue conservation program.
- Provide training and operational direction to staff.
- Develop new standard operating procedures.
- Complete automated meter reading system wide.

Goal: Continue steps to improve water quality, water quantity and system security.

Objective:

- Begin construction of new Water Treatment Plant; pursue capital projects including continuation of annual water line replacement, water source augmentation.
- Enhance SCADA system water supply and security applications.
- Protect reservoir watershed areas and wellhead zones of contribution through land acquisition, regulation, and other available means as appropriate.
- Promote water conservation and increase public awareness of best practices in watershed management near the Bellamy Reservoir.
- Formalize a comprehensive leak detection program

PROGRAMS AND SERVICES:

Water Production- Provide water production for two pressure zones supplying Portsmouth, Newington, Greenland, New Castle and portions of Rye, Madbury, Durham, and Pease International Tradeport.

- Operate and maintain Bellamy Reservoir (surface water supply)
- Operate and maintain 6 wells in Portsmouth pressure zone and 3 wells on Pease International Tradeport pressure zone (groundwater supply)
- Operate and maintain Madbury Water Treatment Plant

Water Storage- Provide water storage capacity reaching 10,600,000 gallons of water.

- Operate and maintain 5 storage tanks in two pressure zones

Water Distribution- Provide water distribution to service Portsmouth, Newington, Greenland, New Castle and portions of Rye, Madbury, Durham, and Pease International Tradeport.

- Provide drinking water supply
- Provide water for fire protection
- Operate and maintain 166 miles of pipe from 2” to 24” in Portsmouth Pressure Zone
- Operate and maintain 23 miles of pipe from 4” to 12” in Pease Pressure Zone
- Maintain 7,800 services from main in street to curb shutoff, installs new services
- Maintain and install hydrants (including biannual flushing program)
- Maintain and install city side water services
- Maintain, install, and read water meters
- Maintain and exercise valves
- Perform backflow testing
- Produce annual quality report (Consumer Confidence Report CCR)

Technical Services- Provide technical services to water division

- Maintain and further develop geographic mapping and information system
- Prepare maps and plans for information analysis and presentation
- Prepare technical specifications, drawings, and estimates
- Review projects in design phase and perform field survey work
- Perform engineering inspections for water construction projects
- Administer and operate the backflow and well head protection programs

PERFORMANCE MEASURES:

| | <u>FY 07</u> | <u>FY 08</u> | <u>Estimated FY 09</u> | <u>Estimated FY 10</u> |
|---|--------------|--------------|----------------------------|----------------------------|
| Percent of unaccounted for water | 24% | 24% | 14% | 14% |
| Number of watermain breaks | 35 | 38 | 32 | 30 |
| Portsmouth Annual Average Consumption cost as a percentage of Average Consumption cost for surveyed NH/ME entities. | 74% | 77% | 77% | 83% |
| Operating costs for treatment of drinking water per million gallons (Chemical costs) | \$110 | \$140 | \$172 | \$189 |
| Kilowatt hours per million gallons | 1,319 | 1,261 | 1,036 | 1,042 |

| Grade | Job Description | Name | Department Request FY10 | Salary Allocated to Water |
|--|--|------------------|-------------------------|---------------------------|
| Water Division | | | | |
| <u>Administration</u> | | | | |
| PMA Grade 24 E | Deputy PW Director | Allen, David | 91,031 | 45,515 |
| 1386 Grade 3 7E/5F | Acct Clerk | Henderson, Patti | 33,433 | 33,433 |
| TOTAL | | | 124,464 | 78,948 |
| <u>Engineering</u> | | | | |
| PMA Grade 21 E | Engineer | Rice, Peter | 78,697 | 39,348 |
| PMA Grade 15 E | GIS Coordinator *Environmental Planner/Sustainability Coordinator | Wise, Jason | 58,842 | 29,421 |
| PMA Grade 15 E | Coordinator | Britz, Peter | 29,422 | 14,711 |
| 1386 Grade 13 G | Eng Tech | Craven, Thomas | 56,393 | 56,393 |
| 1386 Grade 8 G | CAD Tech | Siegel, James | 44,289 | 22,144 |
| 1386 Grade 8 3E/9F | CAD Tech | Cote, Svetlana | 42,816 | 21,408 |
| TOTAL | | | 310,459 | 183,425 |
| <u>Supply and Treatment</u> | | | | |
| PMA Grade 18 E | CPO | Scotton, Steve | 68,044 | 68,044 |
| SMA Grade 12 E | ACPO | Young, Mark | 51,133 | 51,133 |
| 1386 Grade 11 G | Chemist | Armstrong, Peter | 51,195 | 51,195 |
| 1386 Grade 10 G | Plant Oper 2 | Whitmyer, Melvin | 48,775 | 48,775 |
| 1386 Grade 8 G | Plant Oper 1 | Foote, Brian | 44,295 | 44,295 |
| 1386 Grade 8 G | Plant Oper 1 | Lippmeier, David | 44,295 | 44,295 |
| 1386 Grade 8 G | Plant Oper 1 | Balcomb, Alan | 44,295 | 44,295 |
| 1386 Grade 8 6F/6G | Plant Oper 1 | Bartlett, Arthur | 43,702 | 43,702 |
| 1386 Grade 9 G | Lab Tech | Hatin, Bonnie | 46,481 | 23,240 |
| TOTAL | | | 442,215 | 418,974 |
| <u>Distribution</u> | | | | |
| SMA Grade 15 E | Gen Foreman | Jenkins, Michael | 59,136 | 29,568 |
| SMA Grade 13 E | Water Foreman | McGlynn, Scott | 53,667 | 53,667 |
| 1386 Grade 9 E | Equip Oper 2 | Linchey, Kevin | 44,016 | 44,016 |
| 1386 Grade 8 5D/7E | Equip Oper 1 | Shea, Brian | 41,129 | 41,129 |
| 1386 Grade 7 G | Utility Mech | Mahan, Robert | 42,201 | 42,201 |
| 1386 Grade 7 F | Utility Mech | Shaw, Mark | 41,072 | 41,072 |
| 1386 Grade 7 E | Utility Mech | VACANT | 39,972 | 39,972 |
| 1386 Grade 6 E | Truck Driver 1 | Brown, Jonathon | 38,099 | 38,099 |
| 1386 Grade 6 F | W/S Meter Reader | Kecy, Daniel | 39,146 | 19,573 |
| 1386 Grade 6 E | W/S Meter Reader | Desfosses, Lori | 38,099 | 19,050 |
| 1386 Grade 5 G | Laborer | Ronchi, Peter | 38,330 | 38,330 |
| 1386 Grade 5 E | Laborer | Beevers, Jason | 36,306 | 36,306 |
| TOTAL | | | 511,173 | 442,983 |
| TOTAL FULL TIME | | | 1,388,311 | 1,124,330 |
| Laborer | Summer Laborer | | 5,742 | 5,742 |
| Eng Tech | Vacant | | 8,776 | 8,776 |
| TOTAL PART TIME | | | 14,518 | 14,518 |
| TOTAL WATER DEPARTMENT SALARIES | | | 1,402,829 | 1,138,848 |

*25% FUNDED BY WATER, 25% FUNDED BY SEWER, 20% FUNDED BY THE COAKLEY LANDFILL TRUST AND 30% FUNDED BY THE GENERAL FUND.

| | | FY08 | FY08 | FY09 | FY10 | FY10 | FY10 |
|-------------------------------------|---------------------------|------------------|------------------|------------------|-----------------------|-----------------------------|--------------------------|
| | | BUDGET | ACTUAL | BUDGET | DEPARTMENT REQUEST | CITY MANAGER RECOMMENDED | CITY COUNCIL APPROVED |
| WATER DEPARTMENT | | | | | | | |
| ADMINISTRATION PORTSMOUTH | | | | | | | |
| 50-751-610-51-100-492 | | | | | | | |
| 011001 | REGULAR SALARIES | 66,709 | 119,831 | 66,709 | 67,177 | 67,177 | - |
| 011061 | INSURANCE REIMBURSEMENT | - | 185 | - | - | - | - |
| 011064 | COLL BARG CONTINGENCY | 445 | - | 54,180 | 54,180 | 54,180 | - |
| 011065 | COLL BARGAIN CONTINGENCY | - | - | - | 34,890 | 34,890 | - |
| 014041 | OVERTIME | 202 | 64 | 172 | 172 | 172 | - |
| 015001 | LONGEVITY | 8,320 | 7,967 | 8,745 | 7,512 | 7,512 | - |
| 016001 | LEAVE AT TERMINATION | 40,000 | (77) | 30,000 | 30,000 | 30,000 | - |
| 021001 | INSURANCE-HEALTH | 292,123 | 264,768 | 310,675 | 342,706 | 342,706 | - |
| 021101 | INSURANCE-DENTAL | 19,121 | 17,370 | 19,975 | 20,516 | 20,516 | - |
| 021501 | INSURANCE-LIFE | 3,113 | 2,826 | 3,187 | 3,187 | 3,187 | - |
| 021601 | INSURANCE-DISABILITY | 7,413 | 8,082 | 9,090 | 9,090 | 9,090 | - |
| 022001 | SOCIAL SECURITY | 4,176 | 23,023 | 4,174 | 4,181 | 4,181 | - |
| 022501 | MEDICARE | 977 | 2,507 | 976 | 978 | 978 | - |
| 023001 | RETIREMENT | 4,587 | 15,856 | 5,884 | 6,129 | 6,129 | - |
| 026002 | INSURANCE-WORKERS COMP | 17,624 | 17,624 | 23,233 | 18,673 | 18,673 | - |
| 030101 | PROF SERVICES-AUDIT | 8,000 | 8,000 | 8,000 | 8,000 | 8,000 | - |
| 031002 | PROF SERVICES-ENGINEERING | 5,000 | - | 5,000 | 5,000 | 5,000 | - |
| 032001 | PROF SERVICES-O/S COUNSEL | 30,000 | 200 | 30,000 | 30,000 | 30,000 | - |
| 033002 | ADMINISTRATIVE OVERHEAD | 390,084 | 390,084 | 394,137 | 400,014 | 400,014 | - |
| 033003 | OVERHEAD APPLIED | (71,028) | - | (71,028) | (71,028) | (71,028) | - |
| 034001 | LOCK BOXES | 21,000 | 16,886 | 30,000 | 30,000 | 30,000 | - |
| 034103 | TELEPHONE | 800 | 458 | 800 | 800 | 800 | - |
| 035004 | OCCUPATIONAL HEALTH | - | 279 | - | 750 | 750 | - |
| 039054 | PROF/SERVICES-CONTRACT | 15,000 | 9,044 | 15,000 | 15,000 | 15,000 | - |
| 043024 | REPAIRS-VEHICLE | 500 | 2,300 | 500 | 500 | 500 | - |
| 043026 | REPAIRS-COMPUTER EQUIP | 500 | - | 500 | 500 | 500 | - |
| 043027 | REPAIRS-OFFICE EQUIPMENT | 700 | - | 700 | 700 | 700 | - |
| 043028 | MAINTENANCE | 5,525 | 581 | 14,025 | 14,025 | 14,025 | - |
| 048002 | PROPERTY INSURANCE | 23,800 | 22,500 | 24,208 | 25,418 | 25,418 | - |
| 053001 | ADVERTISING | 3,000 | 1,888 | 3,000 | 3,000 | 3,000 | - |
| 054050 | TRAINING-EDUCATION | 1,000 | 572 | 1,000 | 1,000 | 1,000 | - |
| 055050 | PRINTING | 10,000 | 5,271 | 10,000 | 10,000 | 10,000 | - |
| 056001 | DUES PROFESSIONAL ORGANIZ | 500 | - | 500 | 500 | 500 | - |
| 057101 | TRAVEL AND CONFERENCE | 300 | 413 | 300 | 300 | 300 | - |
| 061001 | FIRST AID | - | 65 | - | - | - | - |
| 062001 | OFFICE SUPPLIES | 3,000 | 187 | 3,000 | 3,000 | 3,000 | - |
| 062501 | POSTAGE | 10,000 | 3,670 | 10,000 | 10,000 | 10,000 | - |
| 063501 | GASOLINE | 35,000 | 44,318 | 35,000 | 42,000 | 42,000 | - |
| 067001 | BOOKS & PERIODICALS | - | 104 | - | - | - | - |
| 074000 | MACHINERY AND EQUIPMENT | 5,000 | 130 | 5,000 | 5,000 | 5,000 | - |
| 081005 | TAXES | 69,000 | 78,821 | 78,000 | 78,000 | 78,000 | - |
| 086001 | DEPRECIATION | 100,103 | 96,803 | 125,435 | 151,700 | 151,700 | - |
| | | 1,131,594 | 1,162,600 | 1,260,077 | 1,363,570 | 1,363,570 | - |
| ADMINISTRATION PEASE | | | | | | | |
| 50-751-610-51-500-492 | | | | | | | |
| 011001 | REGULAR SALARIES | 11,772 | 21,994 | 11,772 | 11,772 | 11,772 | - |
| 011064 | COLL BARG CONTINGENCY | - | - | - | - | - | - |
| 014041 | OVERTIME | 37 | - | 30 | 30 | 30 | - |
| 015001 | LONGEVITY | 1,468 | 1,371 | 1,543 | 1,326 | 1,326 | - |
| 016001 | LEAVE AT TERMINATION | 600 | - | 600 | 600 | 600 | - |
| 021001 | INSURANCE-HEALTH | 51,551 | 45,722 | 54,825 | 60,477 | 60,477 | - |
| 021101 | INSURANCE-DENTAL | 3,374 | 3,999 | 3,525 | 3,621 | 3,621 | - |
| 021501 | INSURANCE-LIFE | 549 | 571 | 562 | 562 | 562 | - |
| 021601 | INSURANCE-DISABILITY | 1,308 | 1,482 | 1,604 | 1,604 | 1,604 | - |
| 022001 | SOCIAL SECURITY | 737 | - | 737 | 737 | 737 | - |
| 022501 | MEDICARE | 172 | - | 172 | 172 | 172 | - |
| 023001 | RETIREMENT | 809 | - | 1,038 | 1,082 | 1,082 | - |
| 026002 | INSURANCE-WORKERS COMP | 3,110 | 3,110 | 4,100 | 3,296 | 3,296 | - |
| 030101 | PROF SERVICES-AUDIT | 152 | 152 | 152 | 152 | 152 | - |
| 033002 | ADMINISTRATIVE OVERHEAD | 68,838 | 68,838 | 69,554 | 70,590 | 70,590 | - |
| 034001 | LOCK BOXES | 3,000 | 4,992 | 6,000 | 6,000 | 6,000 | - |
| 043028 | MAINTENANCE | 975 | - | 975 | 975 | 975 | - |
| 044002 | RENTAL OTHER EQUIPMENT | - | - | - | - | - | - |
| 048002 | PROPERTY INSURANCE | 4,200 | 4,200 | 4,272 | 4,486 | 4,486 | - |
| 053001 | ADVERTISING | 300 | 334 | 300 | 300 | 300 | - |
| 054050 | TRAINING-EDUCATION | 100 | 151 | 100 | 100 | 100 | - |
| 055050 | PRINTING | 1,000 | 942 | 1,000 | 1,000 | 1,000 | - |
| 056001 | DUES PROFESSIONAL ORGANIZ | 400 | - | 400 | 400 | 400 | - |
| 057101 | TRAVEL AND CONFERENCE | 25 | 117 | 25 | 25 | 25 | - |
| 062001 | OFFICE SUPPLIES | 300 | - | 300 | 300 | 300 | - |
| 062501 | POSTAGE | 800 | 603 | 800 | 800 | 800 | - |
| 063501 | GASOLINE | 6,000 | 7,244 | 6,000 | 9,000 | 9,000 | - |
| | | 161,577 | 165,822 | 170,386 | 179,407 | 179,407 | - |
| ENGINEERING ADMIN PORTSMOUTH | | | | | | | |
| 50-751-610-52-100-492 | | | | | | | |
| 011001 | REGULAR SALARIES | 154,695 | 78,039 | 126,793 | 127,877 | 127,877 | - |
| 012001 | PART TIME SALARIES | 5,742 | 3 | 5,742 | 5,742 | 5,742 | - |
| 014041 | OVERTIME | 3,953 | 855 | 1,850 | 1,850 | 1,850 | - |
| 022001 | SOCIAL SECURITY | 10,354 | 4,524 | 8,044 | 9,732 | 9,732 | - |
| 022501 | MEDICARE | 2,421 | 1,031 | 1,881 | 1,988 | 1,988 | - |
| 023001 | RETIREMENT | 10,982 | 6,862 | 11,340 | 14,257 | 14,257 | - |
| 031002 | PROF SERVICES-ENGINEERING | 10,000 | 10,200 | 10,000 | 10,000 | 10,000 | - |
| 033004 | GROUNDWATER PROTECT PRGM | 22,000 | 2,202 | 22,000 | 22,000 | 22,000 | - |
| 034103 | TELEPHONE | 1,600 | 1,591 | 1,600 | 1,600 | 1,600 | - |
| 034104 | CELLULAR PHONES | 2,000 | 1,011 | 2,000 | 2,000 | 2,000 | - |
| 039054 | PROF/SERVICES-CONTRACT | 38,000 | 8,621 | 38,000 | 14,000 | 14,000 | - |

| | | FY08 | FY08 | FY09 | FY10 | FY10 | FY10 |
|--------|---------------------------|----------------|----------------|----------------|-----------------------|-----------------------------|--------------------------|
| | | BUDGET | ACTUAL | BUDGET | DEPARTMENT REQUEST | CITY MANAGER RECOMMENDED | CITY COUNCIL APPROVED |
| 043028 | MAINTENANCE | 1,400 | 1,200 | 1,400 | 1,400 | 1,400 | - |
| 054050 | TRAINING-EDUCATION | 1,500 | 1,967 | 3,000 | 3,000 | 3,000 | - |
| 055003 | UPDAING PLATS & MAPS | 1,000 | - | 1,000 | 1,000 | 1,000 | - |
| 055050 | PRINTING | - | - | - | - | - | - |
| 056001 | DUES PROFESSIONAL ORGANIZ | 2,900 | 2,565 | 2,900 | 2,900 | 2,900 | - |
| 057101 | TRAVEL AND CONFERENCE | 1,500 | 1,336 | 1,500 | 1,500 | 1,500 | - |
| 057102 | TRAVEL REIMBURSEMENT | - | - | - | - | - | - |
| 062001 | OFFICE SUPPLIES | 2,500 | 1,519 | 2,500 | 2,500 | 2,500 | - |
| 062007 | COMPUTER/PRINTER SUPPLIES | 5,000 | 2,685 | 5,000 | 5,000 | 5,000 | - |
| 062011 | OPERATING SUPPLIES | 1,500 | 1,788 | 1,500 | 1,500 | 1,500 | - |
| 067001 | BOOKS & PERIODICALS | 1,000 | 3,080 | 1,000 | 1,000 | 1,000 | - |
| 074000 | MACHINERY AND EQUIPMENT | 12,000 | - | 12,000 | 12,000 | 12,000 | - |
| | | 292,047 | 131,080 | 261,050 | 242,846 | 242,846 | - |

**ENGINEERING ADMINISTRATION PEASE
50-751-610-52-500-492**

| | | | | | | | |
|--------|---------------------------|---------------|---------------|---------------|---------------|---------------|---|
| 011001 | REGULAR SALARIES | 27,299 | 13,411 | 27,351 | 27,351 | 27,351 | - |
| 012001 | PART TIME SALARIES | - | - | - | - | - | - |
| 014041 | OVERTIME | 698 | 154 | 407 | 407 | 407 | - |
| 022001 | SOCIAL SECURITY | 1,764 | 734 | 1,750 | 1,750 | 1,750 | - |
| 022501 | MEDICARE | 413 | 199 | 409 | 697 | 697 | - |
| 023001 | RETIREMENT | 1,938 | 1,219 | 2,467 | 2,516 | 2,516 | - |
| 031002 | PROF SERVICES-ENGINEERING | 1,000 | 1,800 | 1,000 | 1,000 | 1,000 | - |
| 033004 | GROUNDWATER PROTECT PRGM | 1,000 | 2,205 | 1,000 | 1,000 | 1,000 | - |
| 034103 | TELEPHONE | 100 | - | 100 | 100 | 100 | - |
| 034104 | CELLULAR PHONES | - | - | - | - | - | - |
| 039054 | PROF/SERVICES-CONTRACT | - | - | - | - | - | - |
| 043028 | MAINTENANCE | 150 | - | 150 | 150 | 150 | - |
| 054003 | STATE CERTIFICATION | - | - | - | - | - | - |
| 054050 | TRAINING-EDUCATION | 294 | - | 294 | 294 | 294 | - |
| 055003 | UPDAING PLATS & MAPS | - | - | - | - | - | - |
| 055050 | PRINTING | - | - | - | - | - | - |
| 056001 | DUES PROFESSIONAL ORGANIZ | 500 | - | 500 | 500 | 500 | - |
| 057101 | TRAVEL AND CONFERENCE | - | - | - | - | - | - |
| 057102 | TRAVEL REIMBURSEMENT | 70 | - | 70 | 70 | 70 | - |
| 062001 | OFFICE SUPPLIES | 300 | - | 300 | 300 | 300 | - |
| 062007 | COMPUTER/PRINTER SUPPLIES | 1,000 | - | 1,000 | 1,000 | 1,000 | - |
| 062011 | OPERATING SUPPLIES | 70 | - | 70 | 70 | 70 | - |
| 067001 | BOOKS & PERIODICALS | 100 | 80 | 100 | 100 | 100 | - |
| | | 36,696 | 19,802 | 36,968 | 37,305 | 37,305 | - |

**TREATMENT PLANT PORTSMOUTH
50-751-650-54-180-492**

| | | | | | | | |
|--------|---------------------------|---------|---------|---------|---------|---------|---|
| 011001 | REGULAR SALARIES | 256,415 | 289,064 | 224,963 | 226,762 | 226,762 | - |
| 011060 | ON CALL MONITORING | 17,203 | 13,630 | 14,601 | 14,601 | 14,601 | - |
| 011062 | SALARIES-LAGOONS | - | - | - | - | - | - |
| 012001 | PART TIME SALARIES | - | 2,598 | - | - | - | - |
| 014041 | OVERTIME | 14,140 | 6,319 | 12,126 | 12,126 | 12,126 | - |
| 022001 | SOCIAL SECURITY | 17,998 | 18,261 | 15,742 | 17,015 | 17,015 | - |
| 022501 | MEDICARE | 4,209 | 4,270 | 3,682 | 3,980 | 3,980 | - |
| 023001 | RETIREMENT | 19,769 | 26,746 | 22,190 | 23,991 | 23,991 | - |
| 031003 | PROF SERVICES-SCADA | 30,000 | 18,571 | 30,000 | 20,000 | 20,000 | - |
| 032001 | PROF SERVICES-O/S COUNSEL | 40,000 | 1,865 | 40,000 | 20,000 | 20,000 | - |
| 033001 | PROF SERVICES-TEMP | - | - | - | - | - | - |
| 034103 | TELEPHONE | 8,500 | 8,563 | 15,000 | 15,000 | 15,000 | - |
| 034104 | CELLULAR PHONES | 5,000 | 2,963 | 3,800 | 3,800 | 3,800 | - |
| 034201 | OUTSIDE PROGRAMMING | 3,000 | - | 22,000 | 22,000 | 22,000 | - |
| 039051 | SECURITY/ALARMS | 1,000 | 315 | 1,500 | 1,500 | 1,500 | - |
| 039054 | PROF/SERVICES-CONTRACT | - | 7,416 | - | - | - | - |
| 041002 | ELECTRICITY | 175,000 | 135,037 | 175,000 | 160,000 | 160,000 | - |
| 041101 | NATURAL GAS | 18,000 | 14,676 | 18,000 | 18,000 | 18,000 | - |
| 041103 | PROPANE GAS | - | - | - | - | - | - |
| 041301 | RUBBISH REMOVAL | 260 | - | 260 | 260 | 260 | - |
| 041308 | SLUDGE DISPOSAL | 75,000 | 25,752 | 75,000 | 50,000 | 50,000 | - |
| 043002 | REPAIRS-ELECTRICAL | 10,000 | 3,925 | 10,000 | 10,000 | 10,000 | - |
| 043004 | REPAIRS-PLUMBING | - | - | - | - | - | - |
| 043005 | REPAIRS-HEATING SYSTEM | 3,000 | 994 | 3,000 | 3,000 | 3,000 | - |
| 043014 | REPAIRS-OTHER | - | - | - | - | - | - |
| 043018 | REPAIRS-EQUIPMENT | 20,000 | 6,549 | 20,000 | 20,000 | 20,000 | - |
| 043024 | REPAIRS-VEHICLE | 5,000 | 15,115 | 10,000 | 10,000 | 10,000 | - |
| 043025 | REPAIRS-BLDINGS & GROUNDS | 3,000 | 2,989 | 3,000 | 3,000 | 3,000 | - |
| 043026 | REPAIRS-COMPUTER EQUIP | 5,000 | 154 | 5,000 | 5,000 | 5,000 | - |
| 043028 | MAINTENANCE | 13,000 | 6,579 | 13,000 | 13,000 | 13,000 | - |
| 043029 | LAGOONS | 30,000 | 9,892 | 30,000 | 30,000 | 30,000 | - |
| 043030 | BELLAMY DAM | 10,000 | 8,615 | 10,000 | 10,000 | 10,000 | - |
| 043031 | SCADA EQUIPMENT | 10,000 | 8,350 | 10,000 | 10,000 | 10,000 | - |
| 044002 | RENTAL OTHER EQUIPMENT | 1,000 | - | 1,000 | 1,000 | 1,000 | - |
| 054003 | STATE CERTIFICATION | 1,000 | 2,000 | 1,000 | 2,000 | 2,000 | - |
| 054050 | TRAINING-EDUCATION | 2,500 | 1,376 | 2,500 | 2,500 | 2,500 | - |
| 055050 | PRINTING | - | - | - | - | - | - |
| 056001 | DUES PROFESSIONAL ORGANIZ | - | 210 | - | - | - | - |
| 056007 | OPERATIONAL PERMITS | 600 | - | 600 | 600 | 600 | - |
| 057101 | TRAVEL AND CONFERENCE | 3,000 | 354 | 3,000 | 3,000 | 3,000 | - |
| 057102 | TRAVEL REIMBURSEMENT | 1,000 | 352 | 1,000 | 1,000 | 1,000 | - |
| 061001 | FIRST AID | 1,000 | 496 | 1,000 | 1,000 | 1,000 | - |
| 061002 | MISCELLANEOUS SUPPLIES | - | - | - | - | - | - |
| 062001 | OFFICE SUPPLIES | 2,000 | 1,127 | 2,000 | 2,000 | 2,000 | - |
| 062007 | COMPUTER/PRINTER SUPPLIES | 500 | 100 | 500 | 500 | 500 | - |
| 062011 | OPERATING SUPPLIES | 5,000 | 2,876 | 5,000 | 5,000 | 5,000 | - |
| 062501 | POSTAGE | 1,000 | 40 | 1,000 | 1,000 | 1,000 | - |
| 063600 | DIESEL FUEL | 1,000 | - | 1,000 | 1,000 | 1,000 | - |
| 063800 | MATERIALS-CHEMICALS | 225,000 | 238,074 | 269,700 | 297,000 | 297,000 | - |
| 067001 | BOOKS & PERIODICALS | - | - | - | - | - | - |

| | | FY08 | FY08 | FY09 | FY10 | FY10 | FY10 |
|--------|--------------------------|------------------|----------------|------------------|-----------------------|-----------------------------|--------------------------|
| | | BUDGET | ACTUAL | BUDGET | DEPARTMENT REQUEST | CITY MANAGER RECOMMENDED | CITY COUNCIL APPROVED |
| 068001 | CLOTHING ALLOWANCE | - | - | - | - | - | - |
| 068002 | CLOTHING | 3,000 | 3,499 | 3,000 | 3,000 | 3,000 | - |
| 068003 | PROTECTIVE CLOTHING | 750 | 328 | 750 | 750 | 750 | - |
| 068030 | TOOLS | 4,000 | 3,012 | 4,000 | 4,000 | 4,000 | - |
| 072000 | BUILDINGS | 10,000 | 3,671 | 10,000 | 10,000 | 10,000 | - |
| 074000 | MACHINERY AND EQUIPMENT | 15,000 | 2,204 | 15,000 | 15,000 | 15,000 | - |
| 074001 | EQUIPMENT | - | - | - | - | - | - |
| 075000 | FURNITURE AND FIXTURES | - | - | - | - | - | - |
| 086001 | DEPRECIATION | 74,224 | 58,224 | 81,161 | 90,155 | 90,155 | - |
| 098002 | PRIN-BONDED DEBT SWT MAD | - | - | - | - | - | - |
| 098102 | INTEREST-BONDED DEBT | 8,208 | 984 | 150,209 | 940,943 | 940,943 | - |
| 092101 | FINANCING FEES ON DEBT | - | - | 150,000 | - | - | - |
| | | 1,154,276 | 958,130 | 1,492,284 | 2,104,483 | 2,104,483 | - |

**TREATMENT PLANT PEASE
50-751-650-54-580-492**

| | | | | | | | |
|--------|---------------------------|----------------|----------------|----------------|----------------|----------------|---|
| 011001 | REGULAR SALARIES | 18,805 | 51,011 | 35,643 | 35,643 | 35,643 | - |
| 014041 | OVERTIME | 1,022 | 47 | 533 | 533 | 533 | - |
| 022001 | SOCIAL SECURITY | 1,240 | 3,225 | 1,223 | 1,223 | 1,223 | - |
| 022501 | MEDICARE | 290 | 755 | 286 | 286 | 286 | - |
| 023001 | RETIREMENT | 1,362 | 4,724 | 1,723 | 2,353 | 2,353 | - |
| 031002 | PROF SERVICES-ENGINEERING | - | - | - | - | - | - |
| 031003 | PROF SERVICES-SCADA | 2,000 | 2,064 | 2,000 | 2,000 | 2,000 | - |
| 034103 | TELEPHONE | 200 | 1,551 | 200 | 200 | 200 | - |
| 034201 | OUTSIDE PROGRAMMING | - | - | - | - | - | - |
| 039010 | PROF/SERVICES-LAB TESTS | 5,000 | - | 5,000 | 5,000 | 5,000 | - |
| 039051 | SECURITY/ALARMS | 200 | - | 200 | 200 | 200 | - |
| 041002 | ELECTRICITY | 25,000 | 22,920 | 25,000 | 25,000 | 25,000 | - |
| 041101 | NATURAL GAS | 2,000 | - | 2,000 | 2,000 | 2,000 | - |
| 041102 | HEATING OIL | 2,000 | - | 2,000 | 2,000 | 2,000 | - |
| 041205 | WATER /SEWER FEES | - | - | - | - | - | - |
| 041301 | RUBBISH REMOVAL | 100 | - | 100 | 100 | 100 | - |
| 041308 | SLUDGE DISPOSAL | - | - | - | - | - | - |
| 043002 | REPAIRS-ELECTRICAL | 500 | - | 500 | 500 | 500 | - |
| 043018 | REPAIRS-EQUIPMENT | 5,000 | 116 | 5,000 | 5,000 | 5,000 | - |
| 043024 | REPAIRS-VEHICLE | - | - | - | - | - | - |
| 043025 | REPAIRS-BLDINGS & GROUNDS | 2,000 | 819 | 2,000 | 2,000 | 2,000 | - |
| 043027 | REPAIRS-OFFICE EQUIPMENT | - | - | - | - | - | - |
| 043028 | MAINTENANCE | 200 | 8 | 200 | 200 | 200 | - |
| 054050 | TRAINING-EDUCATION | - | - | - | - | - | - |
| 055050 | PRINTING | - | - | - | - | - | - |
| 056001 | DUES PROFESSIONAL ORGANIZ | 50 | - | 50 | 50 | 50 | - |
| 056007 | OPERATIONAL PERMITS | - | - | - | - | - | - |
| 057101 | TRAVEL AND CONFERENCE | - | - | - | - | - | - |
| 061001 | FIRST AID | 100 | - | 100 | 100 | 100 | - |
| 062001 | OFFICE SUPPLIES | - | - | - | - | - | - |
| 063800 | MATERIALS-CHEMICALS | 5,000 | 3,185 | 14,700 | 16,000 | 16,000 | - |
| 067001 | BOOKS & PERIODICALS | - | - | - | - | - | - |
| 068001 | CLOTHING ALLOWANCE | 200 | - | 200 | 200 | 200 | - |
| 068002 | CLOTHING | - | - | - | - | - | - |
| 068003 | PROTECTIVE CLOTHING | - | - | - | - | - | - |
| 068004 | MATERIALS-MAINTENANCE | - | - | - | - | - | - |
| 068030 | TOOLS | 200 | - | 200 | 200 | 200 | - |
| 074000 | MACHINERY AND EQUIPMENT | 25,000 | 2,000 | 25,000 | 25,000 | 25,000 | - |
| 075000 | FURNITURE AND FIXTURES | - | - | - | - | - | - |
| 086001 | DEPRECIATION | 29,861 | 20,461 | 32,115 | 32,115 | 32,115 | - |
| | | 127,330 | 112,886 | 155,973 | 157,903 | 157,903 | - |

**LABORATORY PORTSMOUTH
50-751-650-55-180-492**

| | | | | | | | |
|--------|---------------------------|----------------|----------------|----------------|----------------|----------------|---|
| 011001 | REGULAR SALARIES | 58,142 | 68,043 | 62,834 | 62,834 | 62,834 | - |
| 014041 | OVERTIME | 4,728 | 198 | 1,350 | 1,350 | 1,350 | - |
| 022001 | SOCIAL SECURITY | 3,931 | 3,922 | 4,015 | 4,015 | 4,015 | - |
| 022501 | MEDICARE | 919 | 917 | 939 | 939 | 939 | - |
| 023001 | RETIREMENT | 4,318 | 5,962 | 5,660 | 5,950 | 5,950 | - |
| 039010 | PROF/SERVICES-LAB TESTS | 40,000 | 38,434 | 40,000 | 40,000 | 40,000 | - |
| 043018 | REPAIRS-EQUIPMENT | 2,000 | 87 | 2,000 | 2,000 | 2,000 | - |
| 043028 | MAINTENANCE | 1,500 | 694 | 1,500 | 1,500 | 1,500 | - |
| 044002 | RENTAL OTHER EQUIPMENT | - | - | - | - | - | - |
| 054003 | STATE CERTIFICATION | - | - | - | - | - | - |
| 054050 | TRAINING-EDUCATION | - | - | - | - | - | - |
| 056001 | DUES PROFESSIONAL ORGANIZ | 300 | - | 300 | 300 | 300 | - |
| 056007 | OPERATIONAL PERMITS | 175 | - | 175 | 175 | 175 | - |
| 057102 | TRAVEL REIMBURSEMENT | 800 | 346 | 800 | 800 | 800 | - |
| 062001 | OFFICE SUPPLIES | 500 | 1,151 | 500 | 500 | 500 | - |
| 062011 | OPERATING SUPPLIES | 9,750 | 16,305 | 9,750 | 9,750 | 9,750 | - |
| 067001 | BOOKS & PERIODICALS | 300 | - | 300 | 300 | 300 | - |
| 068003 | PROTECTIVE CLOTHING | 100 | - | 100 | 100 | 100 | - |
| 068004 | MATERIALS-MAINTENANCE | - | - | - | - | - | - |
| 068030 | TOOLS | 1,000 | 1,440 | 1,000 | 1,000 | 1,000 | - |
| 074000 | MACHINERY AND EQUIPMENT | 9,000 | 1,815 | 9,000 | 9,000 | 9,000 | - |
| | | 137,463 | 139,314 | 140,223 | 140,513 | 140,513 | - |

**LABORATORY PEASE
50-751-650-55-580-492**

| | | | | | | | |
|--------|---------------------|--------|--------|--------|--------|--------|---|
| 011001 | REGULAR SALARIES | 10,902 | 12,008 | 11,088 | 11,088 | 11,088 | - |
| 014041 | OVERTIME | 886 | - | - | - | - | - |
| 022001 | SOCIAL SECURITY | 737 | 692 | 694 | 694 | 694 | - |
| 022501 | MEDICARE | 172 | 162 | 162 | 162 | 162 | - |
| 023001 | RETIREMENT | 810 | 1,052 | 978 | 1,091 | 1,091 | - |
| 031003 | PROF SERVICES-SCADA | - | - | - | - | - | - |
| 034103 | TELEPHONE | - | - | - | - | - | - |

| | | FY08 | FY08 | FY09 | FY10 | FY10 | FY10 |
|--------|---------------------------|---------------|---------------|---------------|-----------------------|-----------------------------|--------------------------|
| | | BUDGET | ACTUAL | BUDGET | DEPARTMENT REQUEST | CITY MANAGER RECOMMENDED | CITY COUNCIL APPROVED |
| 039010 | PROF/SERVICES-LAB TESTS | 10,000 | 1,700 | 10,000 | 10,000 | 10,000 | - |
| 043018 | REPAIRS-EQUIPMENT | 500 | - | 500 | 500 | 500 | - |
| 056001 | DUES PROFESSIONAL ORGANIZ | - | - | - | - | - | - |
| 056007 | OPERATIONAL PERMITS | - | - | - | - | - | - |
| 057101 | TRAVEL AND CONFERENCE | - | - | - | - | - | - |
| 061002 | MISCELLANEOUS SUPPLIES | 100 | - | 100 | 100 | 100 | - |
| 062001 | OFFICE SUPPLIES | - | - | - | - | - | - |
| 062011 | OPERATING SUPPLIES | 500 | 433 | 500 | 500 | 500 | - |
| 068030 | TOOLS | - | - | - | - | - | - |
| 074000 | MACHINERY AND EQUIPMENT | 3,000 | 2,775 | 3,000 | 3,000 | 3,000 | - |
| | | 27,607 | 18,822 | 27,022 | 27,135 | 27,135 | - |

TREATMENT-WELLS PORTSMOUTH
50-751-650-56-171-492

| | | | | | | | |
|--------|---------------------------|----------------|----------------|----------------|----------------|----------------|---|
| 011001 | REGULAR SALARIES | 33,975 | 642 | 33,721 | 33,721 | 33,721 | - |
| 014041 | OVERTIME | 3,889 | 4,957 | 4,425 | 4,425 | 4,425 | - |
| 022001 | SOCIAL SECURITY | 2,234 | 327 | 2,365 | 2,365 | 2,365 | - |
| 022501 | MEDICARE | 523 | 77 | 553 | 553 | 553 | - |
| 023001 | RETIREMENT | 2,454 | 489 | 3,334 | 3,357 | 3,357 | - |
| 039010 | PROF/SERVICES-LAB TESTS | - | - | - | - | - | - |
| 039054 | PROF/SERVICES-CONTRACT | 5,000 | - | 5,000 | 5,000 | 5,000 | - |
| 041002 | ELECTRICITY | 80,000 | 41,995 | 80,000 | 60,000 | 60,000 | - |
| 041101 | NATURAL GAS | - | - | - | - | - | - |
| 041205 | WATER /SEWER FEES | - | - | - | - | - | - |
| 043002 | REPAIRS-ELECTRICAL | 12,000 | 12,551 | 12,000 | 12,000 | 12,000 | - |
| 043018 | REPAIRS-EQUIPMENT | 12,000 | 7,681 | 12,000 | 12,000 | 12,000 | - |
| 043025 | REPAIRS-BLDINGS & GROUNDS | 10,000 | 1,313 | 10,000 | 10,000 | 10,000 | - |
| 043028 | MAINTENANCE | 15,000 | 2,830 | 15,000 | 15,000 | 15,000 | - |
| 043032 | GENERATOR MAINTENANCE | 1,000 | 500 | 1,000 | 1,000 | 1,000 | - |
| 062011 | OPERATING SUPPLIES | 1,500 | 314 | 1,500 | 1,500 | 1,500 | - |
| 063800 | MATERIALS-CHEMICALS | 3,150 | 998 | 5,600 | 5,600 | 5,600 | - |
| 068030 | TOOLS | - | - | - | - | - | - |
| 098102 | INTEREST-BONDED DEBT | - | - | 40,000 | - | - | - |
| 074000 | MACHINERY AND EQUIPMENT | 47,000 | 30,523 | 47,000 | 47,000 | 47,000 | - |
| 086001 | DEPRECIATION | 20,551 | 13,551 | 20,551 | 20,551 | 20,551 | - |
| | | 250,276 | 118,748 | 294,049 | 234,072 | 234,072 | - |

TREATMENT-WELLS PEASE
50-751-650-56-571-492

| | | | | | | | |
|--------|--------------------|---------------|---------------|----------------|----------------|----------------|---|
| 011001 | REGULAR SALARIES | 16,988 | - | 34,325 | 34,325 | 34,325 | - |
| 014041 | OVERTIME | 875 | 4,792 | 4,125 | 4,125 | 4,125 | - |
| 022001 | SOCIAL SECURITY | 1,117 | 281 | 2,403 | 2,403 | 2,403 | - |
| 022501 | MEDICARE | 261 | 66 | 562 | 562 | 562 | - |
| 023001 | RETIREMENT | 1,227 | 419 | 3,388 | 3,892 | 3,892 | - |
| 041002 | ELECTRICITY | 25,000 | 16,202 | 25,000 | 25,000 | 25,000 | - |
| 041101 | NATURAL GAS | 3,000 | 386 | 3,000 | 3,000 | 3,000 | - |
| 043018 | REPAIRS-EQUIPMENT | 2,000 | 2,390 | 2,000 | 2,000 | 2,000 | - |
| 043028 | MAINTENANCE | 4,000 | 1,836 | 4,000 | 4,000 | 4,000 | - |
| 062011 | OPERATING SUPPLIES | 500 | - | 500 | 500 | 500 | - |
| 068030 | TOOLS | 1,000 | 204 | 1,000 | 1,000 | 1,000 | - |
| 086001 | DEPRECIATION | 39,891 | 29,891 | 39,891 | 39,891 | 39,891 | - |
| | | 95,859 | 56,466 | 120,194 | 120,698 | 120,698 | - |

STORAGE TANKS PORTSMOUTH
50-751-650-571-77-492

| | | | | | | | |
|--------|---------------------------|---------------|---------------|----------------|---------------|---------------|---|
| 031002 | PROF SERVICES-ENGINEERING | 3,000 | - | 3,000 | 3,000 | 3,000 | - |
| 041002 | ELECTRICITY | 10,000 | 4,698 | 10,000 | 10,000 | 10,000 | - |
| 043018 | REPAIRS-EQUIPMENT | 3,000 | 1,426 | 3,000 | 3,000 | 3,000 | - |
| 043025 | REPAIRS-BLDINGS & GROUNDS | 2,000 | 2,978 | 2,000 | 2,000 | 2,000 | - |
| 043028 | MAINTENANCE | 3,000 | 606 | 3,000 | 3,000 | 3,000 | - |
| 044002 | RENTAL OTHER EQUIPMENT | - | - | - | - | - | - |
| 086001 | DEPRECIATION | 41,329 | 34,329 | 41,329 | 41,329 | 41,329 | - |
| 098102 | INTEREST-BONDED DEBT | 34,672 | 34,672 | 49,865 | 30,338 | 30,338 | - |
| | | 97,001 | 78,708 | 112,194 | 92,667 | 92,667 | - |

STORAGE TANKS PEASE
50-751-650-57-577-492

| | | | | | | | |
|--------|---------------------------|---------------|--------------|---------------|---------------|---------------|---|
| 031002 | PROF SERVICES-ENGINEERING | 3,000 | - | 3,000 | 3,000 | 3,000 | - |
| 041002 | ELECTRICITY | 3,000 | 715 | 3,000 | 3,000 | 3,000 | - |
| 043018 | REPAIRS-EQUIPMENT | 600 | 42 | 600 | 600 | 600 | - |
| 043025 | REPAIRS-BLDINGS & GROUNDS | 1,000 | - | 1,000 | 1,000 | 1,000 | - |
| 043028 | MAINTENANCE | 1,000 | - | 1,000 | 1,000 | 1,000 | - |
| 043031 | SCADA EQUIPMENT | - | - | - | - | - | - |
| 086001 | DEPRECIATION | 1,842 | 1,842 | 1,842 | 1,842 | 1,842 | - |
| | | 10,442 | 2,599 | 10,442 | 10,442 | 10,442 | - |

BOOSTER STATION PORTSMOUTH
50-751-650-58-182-492

| | | | | | | | |
|--------|---------------------------|--------|--------|--------|--------|--------|---|
| 034103 | TELEPHONE | 1,000 | - | 1,000 | 1,000 | 1,000 | - |
| 039051 | SECURITY/ALARMS | 500 | - | 500 | 500 | 500 | - |
| 041002 | ELECTRICITY | 75,000 | 66,214 | 75,000 | 75,000 | 75,000 | - |
| 041102 | HEATING OIL | 4,500 | 5,824 | 4,500 | 4,500 | 4,500 | - |
| 041103 | PROPANE GAS | - | - | - | - | - | - |
| 043018 | REPAIRS-EQUIPMENT | 2,000 | 756 | 2,000 | 2,000 | 2,000 | - |
| 043025 | REPAIRS-BLDINGS & GROUNDS | 2,000 | 2,905 | 15,000 | 10,000 | 10,000 | - |
| 043028 | MAINTENANCE | 3,000 | 3,218 | 3,000 | 3,000 | 3,000 | - |
| 043032 | GENERATOR MAINTENANCE | 500 | 250 | 500 | 500 | 500 | - |
| 062011 | OPERATING SUPPLIES | 500 | 31 | 500 | 500 | 500 | - |

| | | FY08 | FY08 | FY09 | FY10 | FY10 | FY10 | |
|--------|-------------------------|----------------|----------------|----------------|-----------------------|-----------------------------|--------------------------|---|
| | | BUDGET | ACTUAL | BUDGET | DEPARTMENT REQUEST | CITY MANAGER RECOMMENDED | CITY COUNCIL APPROVED | |
| 074000 | MACHINERY AND EQUIPMENT | 15,000 | 8,615 | 15,000 | 15,000 | 15,000 | - | - |
| 086001 | DEPRECIATION | 55,384 | 45,381 | 55,384 | 55,384 | 55,384 | - | - |
| 098102 | INTEREST-BONDED DEBT | 8,946 | 8,546 | 12,119 | 7,753 | 7,753 | - | - |
| | | 168,330 | 141,739 | 184,503 | 175,137 | 175,137 | | |

DISTRIBUTION-ADMIN PORTSMOUTH
50-751-660-51-100-492

| | | | | | | | | |
|--------|---------------------------|----------------|----------------|----------------|----------------|----------------|---|---|
| 011001 | REGULAR SALARIES | 112,234 | 145,256 | 155,797 | 148,301 | 148,301 | - | - |
| 012001 | PART TIME SALARIES | - | 327 | - | - | - | - | - |
| 014041 | OVERTIME | 12,140 | 10,694 | 9,289 | 9,289 | 9,289 | - | - |
| 022001 | SOCIAL SECURITY | 7,776 | 9,681 | 9,074 | 9,233 | 9,233 | - | - |
| 022501 | MEDICARE | 1,819 | 2,264 | 2,122 | 1,926 | 1,926 | - | - |
| 023001 | RETIREMENT | 8,541 | 14,250 | 10,146 | 14,586 | 14,586 | - | - |
| 034101 | PAGERS | 3,500 | 993 | 3,500 | 3,500 | 3,500 | - | - |
| 034103 | TELEPHONE | 3,500 | 4,405 | 3,500 | 3,500 | 3,500 | - | - |
| 034104 | CELLULAR PHONES | 2,200 | 1,409 | 2,200 | 2,200 | 2,200 | - | - |
| 039051 | SECURITY/ALARMS | - | - | - | - | - | - | - |
| 041002 | ELECTRICITY | 300 | - | 300 | 300 | 300 | - | - |
| 041102 | HEATING OIL | - | - | - | - | - | - | - |
| 041205 | WATER /SEWER FEES | - | - | - | - | - | - | - |
| 041305 | HOUSEHOLD HAZARDOUS WASTE | 23,000 | - | 23,000 | 23,000 | 23,000 | - | - |
| 043018 | REPAIRS-EQUIPMENT | 10,000 | 4,558 | 10,000 | 10,000 | 10,000 | - | - |
| 043024 | REPAIRS-VEHICLE | 20,000 | 35,608 | 25,000 | 25,000 | 25,000 | - | - |
| 043025 | REPAIRS-BLDINGS & GROUNDS | 3,000 | - | 3,000 | 3,000 | 3,000 | - | - |
| 043027 | REPAIRS-OFFICE EQUIPMENT | 1,000 | 775 | 1,000 | 1,000 | 1,000 | - | - |
| 043028 | MAINTENANCE | 1,500 | 1,383 | 1,500 | 1,500 | 1,500 | - | - |
| 044002 | RENTAL OTHER EQUIPMENT | 8,000 | - | 8,000 | 8,000 | 8,000 | - | - |
| 054003 | STATE CERTIFICATION | 500 | - | 500 | 500 | 500 | - | - |
| 054050 | TRAINING-EDUCATION | 2,000 | 5,125 | 2,000 | 2,000 | 2,000 | - | - |
| 055050 | PRINTING | 900 | - | 900 | 900 | 900 | - | - |
| 056001 | DUES PROFESSIONAL ORGANIZ | 450 | - | 450 | 450 | 450 | - | - |
| 061001 | FIRST AID | 500 | 1,087 | 500 | 500 | 500 | - | - |
| 062001 | OFFICE SUPPLIES | 600 | 66 | 600 | 600 | 600 | - | - |
| 062011 | OPERATING SUPPLIES | 600 | 423 | 600 | 600 | 600 | - | - |
| 065051 | GROUNDSKEEPING-DIG SAFE | 2,900 | 1,791 | 2,900 | 2,900 | 2,900 | - | - |
| 067001 | BOOKS & PERIODICALS | 150 | - | 150 | 150 | 150 | - | - |
| 068002 | CLOTHING | 6,000 | 7,117 | 6,000 | 6,000 | 6,000 | - | - |
| 068003 | PROTECTIVE CLOTHING | 500 | 300 | 500 | 500 | 500 | - | - |
| 068008 | MATERIALS-STOCK | - | - | - | - | - | - | - |
| 068012 | STOCK INVENTORY | - | - | - | - | - | - | - |
| 068015 | MATERIALS-CAP OUTLAY BILL | - | - | - | - | - | - | - |
| 068016 | MATERIALS | 10,000 | 29,443 | 10,000 | 10,000 | 10,000 | - | - |
| 068030 | TOOLS | 7,000 | 2,948 | 7,000 | 7,000 | 7,000 | - | - |
| 074000 | MACHINERY AND EQUIPMENT | 12,000 | - | 12,000 | 12,000 | 12,000 | - | - |
| 086001 | DEPRECIATION | 304,753 | 285,047 | 278,045 | 278,045 | 278,045 | - | - |
| | | 567,363 | 564,950 | 589,573 | 586,480 | 586,480 | | |

DISTRIBUTION-ADMIN PEASE
50-751-660-51-500-492

| | | | | | | | | |
|--------|---------------------------|---------------|---------------|---------------|---------------|---------------|---|---|
| 011001 | REGULAR SALARIES | 24,399 | 25,633 | 32,898 | 32,898 | 32,898 | - | - |
| 014041 | OVERTIME | 2,639 | - | - | - | - | - | - |
| 022001 | SOCIAL SECURITY | 1,690 | 1,076 | 1,517 | 1,517 | 1,517 | - | - |
| 022501 | MEDICARE | 395 | 252 | 355 | 355 | 355 | - | - |
| 023001 | RETIREMENT | 1,857 | 1,583 | 1,667 | 3,267 | 3,267 | - | - |
| 034103 | TELEPHONE | 250 | - | 250 | 250 | 250 | - | - |
| 039051 | SECURITY/ALARMS | 100 | - | 100 | 100 | 100 | - | - |
| 041002 | ELECTRICITY | 20 | - | 20 | 20 | 20 | - | - |
| 041102 | HEATING OIL | - | - | - | - | - | - | - |
| 041205 | WATER /SEWER FEES | - | - | - | - | - | - | - |
| 043018 | REPAIRS-EQUIPMENT | 1,500 | - | 1,500 | 1,500 | 1,500 | - | - |
| 043025 | REPAIRS-BLDINGS & GROUNDS | 600 | - | 600 | 600 | 600 | - | - |
| 043027 | REPAIRS-OFFICE EQUIPMENT | 60 | - | 60 | 60 | 60 | - | - |
| 043028 | MAINTENANCE | 400 | 244 | 400 | 400 | 400 | - | - |
| 044002 | RENTAL OTHER EQUIPMENT | - | - | - | - | - | - | - |
| 054003 | STATE CERTIFICATION | 50 | - | 50 | 50 | 50 | - | - |
| 054050 | TRAINING-EDUCATION | 100 | 904 | 100 | 100 | 100 | - | - |
| 055050 | PRINTING | - | - | - | - | - | - | - |
| 056001 | DUES PROFESSIONAL ORGANIZ | - | - | - | - | - | - | - |
| 061001 | FIRST AID | 60 | - | 60 | 60 | 60 | - | - |
| 062001 | OFFICE SUPPLIES | 100 | - | 100 | 100 | 100 | - | - |
| 062011 | OPERATING SUPPLIES | 100 | - | 100 | 100 | 100 | - | - |
| 067001 | BOOKS & PERIODICALS | - | - | - | - | - | - | - |
| 068002 | CLOTHING | 1,000 | - | 1,000 | 1,000 | 1,000 | - | - |
| 068016 | MATERIALS | 1,700 | 9,814 | 1,700 | 1,700 | 1,700 | - | - |
| 068030 | TOOLS | 2,300 | 520 | 2,300 | 2,300 | 2,300 | - | - |
| 074000 | MACHINERY AND EQUIPMENT | 1,500 | - | 1,500 | 1,500 | 1,500 | - | - |
| | | 40,820 | 40,026 | 46,277 | 47,877 | 47,877 | | |

DISTRIBUTION CROSSCONNECT
50-751-660-53-100-492

| | | | | | | | | |
|--------|------------------------|--------|--------|--------|--------|--------|---|---|
| 011001 | REGULAR SALARIES | 39,038 | 25,168 | 23,346 | 23,346 | 23,346 | - | - |
| 011058 | BILLABLE SALARIES | - | - | - | - | - | - | - |
| 014041 | OVERTIME | 4,223 | 160 | 500 | 500 | 500 | - | - |
| 014053 | O/T-BILLABLE | - | - | - | - | - | - | - |
| 022001 | SOCIAL SECURITY | 2,705 | 1,442 | 1,478 | 1,478 | 1,478 | - | - |
| 022501 | MEDICARE | 633 | 338 | 346 | 346 | 346 | - | - |
| 023001 | RETIREMENT | 2,971 | 2,212 | 2,084 | 3,184 | 3,184 | - | - |
| 039054 | PROF/SERVICES-CONTRACT | - | - | - | 24,000 | 24,000 | - | - |
| 043028 | MAINTENANCE | 500 | - | 500 | 500 | 500 | - | - |
| 054003 | STATE CERTIFICATION | 100 | 75 | 100 | 100 | 100 | - | - |
| 054050 | TRAINING-EDUCATION | 500 | 189 | 500 | 500 | 500 | - | - |

| | | FY08 | FY08 | FY09 | FY10 | FY10 | FY10 |
|--------------------------------------|---------------------------|----------------|----------------|----------------|-----------------------|-----------------------------|--------------------------|
| | | BUDGET | ACTUAL | BUDGET | DEPARTMENT REQUEST | CITY MANAGER RECOMMENDED | CITY COUNCIL APPROVED |
| 055050 | PRINTING | - | - | - | - | - | - |
| 056001 | DUES PROFESSIONAL ORGANIZ | 700 | 58 | 700 | 700 | 700 | - |
| 057101 | TRAVEL AND CONFERENCE | 300 | - | 300 | 300 | 300 | - |
| 062001 | OFFICE SUPPLIES | 100 | 493 | 100 | 100 | 100 | - |
| 062011 | OPERATING SUPPLIES | 1,000 | 1,720 | 3,500 | 3,500 | 3,500 | - |
| 067001 | BOOKS & PERIODICALS | 200 | - | 200 | 200 | 200 | - |
| 074000 | MACHINERY AND EQUIPMENT | 1,000 | - | 1,000 | 1,000 | 1,000 | - |
| | | 53,970 | 31,854 | 34,654 | 59,754 | 59,754 | - |
| DISTRIBUTION CROSSCONNECT | | | | | | | |
| 50-751-660-53-500-492 | | | | | | | |
| 011001 | REGULAR SALARIES | 4,880 | 4,441 | 4,850 | 4,850 | 4,850 | - |
| 014041 | OVERTIME | 528 | - | 50 | 50 | 50 | - |
| 022001 | SOCIAL SECURITY | 338 | 254 | 340 | 340 | 340 | - |
| 022501 | MEDICARE | 79 | 59 | 79 | 79 | 79 | - |
| 023001 | RETIREMENT | 371 | 390 | 479 | 878 | 878 | - |
| 043028 | MAINTENANCE | 70 | - | 70 | 70 | 70 | - |
| 054003 | STATE CERTIFICATION | 30 | - | 30 | 30 | 30 | - |
| 054050 | TRAINING-EDUCATION | 150 | - | 150 | 150 | 150 | - |
| 056001 | DUES PROFESSIONAL ORGANIZ | 100 | - | 100 | 100 | 100 | - |
| 057101 | TRAVEL AND CONFERENCE | 25 | - | 25 | 25 | 25 | - |
| 062001 | OFFICE SUPPLIES | 30 | 87 | 30 | 30 | 30 | - |
| 062004 | PHOTO SUPPLIES | - | - | - | - | - | - |
| 067001 | BOOKS & PERIODICALS | - | - | - | - | - | - |
| | | 6,601 | 5,231 | 6,203 | 6,602 | 6,602 | - |
| DISTRIBUTION-MAINS PORTSMOUTH | | | | | | | |
| 50-751-660-61-100-492 | | | | | | | |
| 011001 | REGULAR SALARIES | 78,076 | 62,610 | 72,748 | 60,755 | 60,755 | - |
| 011056 | CAPITAL OUTLAY-LABOR | - | - | - | - | - | - |
| 011058 | BILLABLE SALARIES | - | - | - | - | - | - |
| 011059 | BILLABLE CAP OUTLAY SAL | - | - | - | - | - | - |
| 012001 | PART TIME SALARIES | - | 743 | - | - | - | - |
| 014041 | OVERTIME | 8,445 | 22,053 | 19,952 | 19,952 | 19,952 | - |
| 014053 | O/T-BILLABLE | - | - | - | - | - | - |
| 014056 | O/T CAPITAL OUTLAY LABOR | - | - | - | - | - | - |
| 022001 | SOCIAL SECURITY | 5,409 | 6,809 | 5,790 | 5,790 | 5,790 | - |
| 022501 | MEDICARE | 1,265 | 1,592 | 1,354 | 1,354 | 1,354 | - |
| 023001 | RETIREMENT | 5,941 | 9,973 | 6,744 | 7,944 | 7,944 | - |
| 039011 | CAPITAL OUTLAY-CONTRACT | - | - | - | - | - | - |
| 039012 | CAP OUTLAY-CONTRACT-BILL | - | - | - | - | - | - |
| 039052 | PROF/SERV-CAPITAL OUTLAY | - | - | - | - | - | - |
| 039054 | PROF/SERVICES-CONTRACT | 8,000 | 25,654 | 8,000 | 8,000 | 8,000 | - |
| 039055 | PROF/SERV-CONTRACT-BILLAB | - | (4,952) | - | - | - | - |
| 044002 | RENTAL OTHER EQUIPMENT | - | 1,260 | - | - | - | - |
| 068008 | MATERIALS-STOCK | 9,500 | - | 9,500 | 9,500 | 9,500 | - |
| 068010 | CAP OUTLAY-STOCK MATERIAL | - | - | - | - | - | - |
| 068014 | MATERIALS-CAPITAL OUTLAY | - | - | - | - | - | - |
| 068016 | MATERIALS | 60,000 | 52,913 | 60,000 | 60,000 | 60,000 | - |
| 077000 | CAPITAL OUTLAY OVERHEAD | - | - | - | - | - | - |
| 098102 | INTEREST-BONDED DEBT | 142,234 | 142,234 | 214,931 | 124,454 | 124,454 | - |
| | | 318,870 | 320,888 | 399,019 | 297,749 | 297,749 | - |
| DISTRIBUTION-MAINS PEASE | | | | | | | |
| 50-751-660-61-500-492 | | | | | | | |
| 011001 | REGULAR SALARIES | 4,880 | 3,385 | 14,550 | 4,550 | 4,550 | - |
| 011058 | BILLABLE SALARIES | - | - | - | - | - | - |
| 012001 | PART TIME SALARIES | - | - | - | - | - | - |
| 014041 | OVERTIME | 528 | 1,375 | 500 | 500 | 500 | - |
| 014053 | O/T-BILLABLE | - | - | - | - | - | - |
| 022001 | SOCIAL SECURITY | 338 | 281 | 942 | 942 | 942 | - |
| 022501 | MEDICARE | 79 | 66 | 220 | 220 | 220 | - |
| 023001 | RETIREMENT | 371 | 416 | 1,044 | 1,544 | 1,544 | - |
| 043018 | REPAIRS-EQUIPMENT | - | - | - | - | - | - |
| 043028 | MAINTENANCE | - | - | - | - | - | - |
| 044002 | RENTAL OTHER EQUIPMENT | 1,500 | - | 1,500 | 1,500 | 1,500 | - |
| 068008 | MATERIALS-STOCK | - | - | - | - | - | - |
| 068014 | MATERIALS-CAPITAL OUTLAY | - | - | - | - | - | - |
| 068015 | MATERIALS-CAP OUTLAY BILL | - | - | - | - | - | - |
| 068016 | MATERIALS | 3,000 | (52) | 3,000 | 3,000 | 3,000 | - |
| | | 10,696 | 5,471 | 21,756 | 12,256 | 12,256 | - |

| | | FY08 | FY08 | FY09 | FY10 | FY10 | FY10 |
|---|---------------------------|----------------|-----------------|----------------|-----------------------|-----------------------------|--------------------------|
| | | BUDGET | ACTUAL | BUDGET | DEPARTMENT REQUEST | CITY MANAGER RECOMMENDED | CITY COUNCIL APPROVED |
| DISTRIBUTION-SERVICES PORTSMOUTH | | | | | | | |
| 50-751-660-62-100-492 | | | | | | | |
| 011001 | REGULAR SALARIES | 78,076 | 81,270 | 72,748 | 64,748 | 64,748 | - |
| 011056 | CAPITAL OUTLAY-LABOR | - | - | - | - | - | - |
| 011058 | BILLABLE SALARIES | - | - | - | - | - | - |
| 011059 | BILLABLE CAP OUTLAY SAL | - | - | - | - | - | - |
| 012001 | PART TIME SALARIES | 8,776 | 1,527 | 8,776 | 8,776 | 8,776 | - |
| 014041 | OVERTIME | 8,445 | 9,525 | 5,952 | 5,952 | 5,952 | - |
| 014056 | O/T CAPITAL OUTLAY LABOR | - | - | - | - | - | - |
| 014057 | O/T BILLABLE CAP OUTLAY | - | - | - | - | - | - |
| 022001 | SOCIAL SECURITY | 5,953 | 5,452 | 4,922 | 4,922 | 4,922 | - |
| 022501 | MEDICARE | 1,392 | 1,275 | 1,151 | 1,151 | 1,151 | - |
| 023001 | RETIREMENT | 5,941 | 7,930 | 5,521 | 5,521 | 5,521 | - |
| 039011 | CAPITAL OUTLAY-CONTRACT | 2,000 | - | 2,000 | 2,000 | 2,000 | - |
| 039052 | PROF/SERV-CAPITAL OUTLAY | - | - | - | - | - | - |
| 039053 | PROF/SERV-CAP OUTLAY BILL | - | - | - | - | - | - |
| 039054 | PROF/SERVICES-CONTRACT | 2,000 | 5,842 | 2,000 | 2,000 | 2,000 | - |
| 039055 | PROF/SERV-CONTRACT-BILLAB | - | - | - | - | - | - |
| 068004 | MATERIALS-MAINTENANCE | - | - | - | - | - | - |
| 068008 | MATERIALS-STOCK | 7,500 | - | 7,500 | 7,500 | 7,500 | - |
| 068010 | CAP OUTLAY-STOCK MATERIAL | 12,500 | - | 12,500 | 12,500 | 12,500 | - |
| 068013 | MATERIAL-BILLABLE | - | - | - | - | - | - |
| 068014 | MATERIALS-CAPITAL OUTLAY | 10,000 | - | 10,000 | 10,000 | 10,000 | - |
| 068016 | MATERIALS | 15,000 | 8,702 | 15,000 | 15,000 | 15,000 | - |
| 074000 | MACHINERY AND EQUIPMENT | 2,500 | - | 2,500 | 2,500 | 2,500 | - |
| 077000 | CAPITAL OUTLAY OVERHEAD | - | - | - | - | - | - |
| 086001 | DEPRECIATION | - | - | - | - | - | - |
| | | 160,083 | 121,522 | 150,570 | 142,570 | 142,570 | - |
| DISTRIBUTION-SERVICES PEASE | | | | | | | |
| 50-751-660-62-500-492 | | | | | | | |
| 011001 | REGULAR SALARIES | 9,759 | 2,764 | 7,275 | 2,758 | 2,758 | - |
| 011056 | CAPITAL OUTLAY-LABOR | - | - | - | - | - | - |
| 011058 | BILLABLE SALARIES | - | - | - | - | - | - |
| 012001 | PART TIME SALARIES | - | - | - | - | - | - |
| 014041 | OVERTIME | 1,056 | 186 | 995 | 995 | 995 | - |
| 014053 | O/T-BILLABLE | - | - | - | - | - | - |
| 014056 | O/T CAPITAL OUTLAY LABOR | - | - | - | - | - | - |
| 014057 | O/T BILLABLE CAP OUTLAY | - | - | - | - | - | - |
| 022001 | SOCIAL SECURITY | 676 | 172 | 517 | 517 | 517 | - |
| 022501 | MEDICARE | 158 | 40 | 121 | 121 | 121 | - |
| 023001 | RETIREMENT | 743 | 258 | 587 | 587 | 587 | - |
| 039054 | PROF/SERVICES-CONTRACT | - | - | - | - | - | - |
| 068008 | MATERIALS-STOCK | 6,000 | - | 6,000 | 6,000 | 6,000 | - |
| 068013 | MATERIAL-BILLABLE | - | - | - | - | - | - |
| 068014 | MATERIALS-CAPITAL OUTLAY | - | - | - | - | - | - |
| 068016 | MATERIALS | 1,000 | (16,412) | 1,000 | 1,000 | 1,000 | - |
| 068030 | TOOLS | - | - | - | - | - | - |
| 074000 | MACHINERY AND EQUIPMENT | - | - | - | - | - | - |
| | | 19,392 | (12,992) | 16,495 | 11,978 | 11,978 | - |
| DISTRIBUTION-HYDRANTS PORTSMOUTH | | | | | | | |
| 50-751-660-63-100-492 | | | | | | | |
| 011001 | REGULAR SALARIES | 34,158 | 39,124 | 38,799 | 38,799 | 38,799 | - |
| 011056 | CAPITAL OUTLAY-LABOR | - | - | - | - | - | - |
| 011059 | BILLABLE CAP OUTLAY SAL | - | - | - | - | - | - |
| 012001 | PART TIME SALARIES | - | 1,859 | - | - | - | - |
| 014041 | OVERTIME | 36,950 | 28,640 | 26,639 | 26,639 | 26,639 | - |
| 014056 | O/T CAPITAL OUTLAY LABOR | - | - | - | - | - | - |
| 014057 | O/T BILLABLE CAP OUTLAY | - | - | - | - | - | - |
| 022001 | SOCIAL SECURITY | 2,367 | 4,098 | 4,080 | 4,080 | 4,080 | - |
| 022501 | MEDICARE | 553 | 958 | 954 | 954 | 954 | - |
| 023001 | RETIREMENT | 2,599 | 5,923 | 4,995 | 4,995 | 4,995 | - |
| 039052 | PROF/SERV-CAPITAL OUTLAY | - | - | - | - | - | - |
| 039054 | PROF/SERVICES-CONTRACT | 3,000 | - | 3,000 | 3,000 | 3,000 | - |
| 062011 | OPERATING SUPPLIES | - | - | - | - | - | - |
| 068008 | MATERIALS-STOCK | 7,500 | - | 7,500 | 7,500 | 7,500 | - |
| 068010 | CAP OUTLAY-STOCK MATERIAL | - | - | - | - | - | - |
| 068013 | MATERIAL-BILLABLE | - | - | - | - | - | - |
| 068014 | MATERIALS-CAPITAL OUTLAY | 5,000 | - | 5,000 | 5,000 | 5,000 | - |
| 068016 | MATERIALS | 6,000 | 18,939 | 6,000 | 6,000 | 6,000 | - |
| 068030 | TOOLS | 500 | - | 500 | 500 | 500 | - |
| 074000 | MACHINERY AND EQUIPMENT | 2,500 | - | 2,500 | 2,500 | 2,500 | - |
| | | 101,127 | 99,542 | 99,967 | 99,967 | 99,967 | - |
| DISTRIBUTION-HYDRANTS PEASE | | | | | | | |
| 50-751-660-63-500-492 | | | | | | | |
| 011001 | REGULAR SALARIES | 24,399 | 5,246 | 7,275 | 7,275 | 7,275 | - |
| 011058 | BILLABLE SALARIES | - | - | - | - | - | - |
| 014041 | OVERTIME | 2,639 | 1,771 | 7,990 | 7,990 | 7,990 | - |
| 014053 | O/T-BILLABLE | - | - | - | - | - | - |
| 022001 | SOCIAL SECURITY | 1,690 | 416 | 951 | 951 | 951 | - |
| 022501 | MEDICARE | 395 | 97 | 222 | 222 | 222 | - |
| 023001 | RETIREMENT | 1,857 | 613 | 1,198 | 1,248 | 1,248 | - |
| 043028 | MAINTENANCE | - | - | - | - | - | - |
| 068008 | MATERIALS-STOCK | - | - | - | - | - | - |
| 068016 | MATERIALS | 1,000 | 11,263 | 1,000 | 1,000 | 1,000 | - |
| | | 31,980 | 19,406 | 18,636 | 18,686 | 18,686 | - |
| DISTRIBUTION-METERS PORTSMOUTH | | | | | | | |

| | | FY08 | FY08 | FY09 | FY10 | FY10 | FY10 |
|--|---------------------------|------------------|------------------|------------------|-----------------------|-----------------------------|--------------------------|
| | | BUDGET | ACTUAL | BUDGET | DEPARTMENT REQUEST | CITY MANAGER RECOMMENDED | CITY COUNCIL APPROVED |
| 50-751-660-64-100-492 | | | | | | | |
| 011001 | REGULAR SALARIES | 63,437 | 51,360 | 63,349 | 63,349 | 63,349 | - |
| 012001 | PART TIME SALARIES | - | 24 | - | - | - | - |
| 014041 | OVERTIME | 6,862 | 257 | 2,578 | 2,578 | 2,578 | - |
| 022001 | SOCIAL SECURITY | 4,395 | 2,976 | 2,498 | 2,498 | 2,498 | - |
| 022501 | MEDICARE | 1,028 | 696 | 818 | 818 | 818 | - |
| 023001 | RETIREMENT | 4,827 | 4,511 | 3,892 | 3,892 | 3,892 | - |
| 039054 | PROF/SERVICES-CONTRACT | 25,000 | - | 25,000 | 25,000 | 25,000 | - |
| 043018 | REPAIRS-EQUIPMENT | 20,000 | 17,352 | 20,000 | 20,000 | 20,000 | - |
| 055050 | PRINTING | - | - | - | - | - | - |
| 062011 | OPERATING SUPPLIES | 1,000 | 2,074 | 1,000 | 1,000 | 1,000 | - |
| 068008 | MATERIALS-STOCK | - | - | - | - | - | - |
| 068010 | CAP OUTLAY-STOCK MATERIAL | - | - | - | - | - | - |
| 068011 | BILL CAP OUTLAY STOCK MAT | - | - | - | - | - | - |
| 068016 | MATERIALS | 15,000 | 8,655 | 15,000 | 15,000 | 15,000 | - |
| 074000 | MACHINERY AND EQUIPMENT | 5,000 | - | 5,000 | 5,000 | 5,000 | - |
| 086001 | DEPRECIATION | - | - | - | 40,932 | 40,932 | - |
| | | 146,549 | 87,904 | 139,135 | 180,067 | 180,067 | - |
| DISTRIBUTION-METERS PEASE | | | | | | | |
| 50-751-660-64-500-492 | | | | | | | |
| 011001 | REGULAR SALARIES | 14,639 | - | 19,550 | 19,550 | 19,550 | - |
| 012001 | PART TIME SALARIES | - | - | - | - | - | - |
| 014041 | OVERTIME | 1,583 | - | 537 | 537 | 537 | - |
| 022001 | SOCIAL SECURITY | 1,014 | - | 944 | 944 | 944 | - |
| 022501 | MEDICARE | 237 | - | 221 | 221 | 221 | - |
| 023001 | RETIREMENT | 1,114 | - | 1,047 | 1,047 | 1,047 | - |
| 039054 | PROF/SERVICES-CONTRACT | 1,500 | - | 1,500 | 1,500 | 1,500 | - |
| 062011 | OPERATING SUPPLIES | 100 | - | 100 | 100 | 100 | - |
| 068010 | CAP OUTLAY-STOCK MATERIAL | - | - | - | - | - | - |
| 068016 | MATERIALS | 1,000 | 1,395 | 1,000 | 1,000 | 1,000 | - |
| 074000 | MACHINERY AND EQUIPMENT | 1,000 | - | 1,000 | 1,000 | 1,000 | - |
| | | 22,187 | 1,395 | 25,899 | 25,899 | 25,899 | - |
| CAPITAL PROJECT-BLDG PORTSMOUTH | | | | | | | |
| 50-751-950-92-100-492 | | | | | | | |
| 073003 | NON-SRF PROJECT | - | - | - | - | - | - |
| 076005 | VEHICLES-WATER | - | - | - | - | - | - |
| | | - | - | - | - | - | - |
| TOTAL WATER DIVISION | | 5,170,136 | 4,391,914 | 5,813,549 | 6,376,063 | 6,376,063 | - |



SEWER DIVISION

MISSION:

The Sewer Division mission is to provide cost-effective, reliable and high-quality wastewater collection and treatment services to its customers. We are committed to operate and maintain our facilities economically and safely while protecting the public health and the environment.

BUDGET COMMENTS:

The Sewer Division's proposed FY10 budget is \$8,395,569. This represents a decrease of (\$399,450) or (4.5%) from FY09. The Sewer Division continues to focus on meeting regulatory requirements through the Wastewater masterplan, implementation of the long term control plan, operations at two wastewater treatment plants and 20 pumpstations and inspecting and maintaining over 100 miles of sewer lines. The City is aggressively pursuing the American Recovery and Reinvestment Act (*Economic Stimulus Package*) through the legislative delegation and working closely with the Department of Environmental Services. Projects that could be implemented quickly include sewer separation projects such as the State Street sewer separation and streetscape project as well as the projects identified in the Long Term Control Plan project.

BUDGET SUMMARY OF EXPENDITURES:

| SEWER DEPARTMENT | FY08 BUDGET | FY08 ACTUAL | FY09 BUDGET | FY10 DEPARTMENT REQUEST | FY10 CITY MANAGER RECOMMENDED | FY10 CITY COUNCIL APPROVED |
|-----------------------------------|------------------|------------------|------------------|-------------------------------|-------------------------------------|----------------------------------|
| SALARIES | 1,090,971 | 983,433 | 1,086,581 | 1,133,342 | 1,133,342 | - |
| PART-TIME SALARIES | 14,518 | 2,510 | 14,518 | 14,518 | 14,518 | - |
| OVERTIME | 79,762 | 77,125 | 93,124 | 96,000 | 96,000 | - |
| HEALTH INSURANCE | 329,344 | 239,464 | 372,557 | 353,618 | 353,618 | - |
| DENTAL INSURANCE | 24,516 | 20,050 | 25,200 | 24,646 | 24,646 | - |
| LEAVE AT TERMINATION | 20,000 | 52,570 | 42,000 | 42,000 | 42,000 | - |
| WORKERS' COMPENSATION | 13,654 | 13,654 | 21,602 | 13,604 | 13,604 | - |
| OTHER FRINGE BENEFITS | 198,914 | 211,835 | 212,431 | 249,368 | 249,368 | - |
| COLLECTIVE BARGAINING CONTINGENCY | - | - | 50,691 | 89,404 | 89,404 | - |
| <i>Contractual Obligations</i> | 1,771,679 | 1,600,640 | 1,918,704 | 2,016,500 | 2,016,500 | - |
| CHEMICALS | 745,600 | 662,586 | 780,600 | 859,000 | 859,000 | - |
| REPAIRS TO EQUIP/BLDGS | 452,145 | 439,292 | 444,645 | 392,645 | 392,645 | - |
| UTILITIES | 759,500 | 639,075 | 746,500 | 746,500 | 746,500 | - |
| ADMINISTRATIVE OVERHEAD | 445,646 | 445,646 | 450,444 | 457,093 | 457,093 | - |
| SLUDGE/GRIT REMOVAL | 395,000 | 316,443 | 395,000 | 380,000 | 380,000 | - |
| PROF CONTRACTED SERVICES | 286,932 | 141,544 | 222,932 | 237,932 | 237,932 | - |
| INTEREST ON DEBT | 990,599 | 909,494 | 1,723,625 | 1,132,019 | 1,132,019 | - |
| DEPRECIATION | 1,377,332 | 1,179,168 | 1,324,221 | 1,389,272 | 1,389,272 | - |
| EQUIPMENT | 264,043 | 58,160 | 264,043 | 259,043 | 259,043 | - |
| OTHER NON-OPERATING | 458,017 | 288,719 | 524,305 | 525,565 | 525,565 | - |
| <i>Other Operating</i> | 6,174,814 | 5,080,128 | 6,876,315 | 6,379,069 | 6,379,069 | - |
| TOTAL | 7,946,493 | 6,680,768 | 8,795,019 | 8,395,569 | 8,395,569 | - |

SEWER RATE

The Sewer Division uses a two-tier inclining rate block structure similar to the Water Division. Sewer charges are based off of water consumption. The first tier rate is assessed for the first 10 units of water consumed per month and the second tier rate is assessed for water consumption over 10 units. This two-tier inclining rate block structure provides an equitable method of financing of wastewater operations.

For FY10, the Sewer Division is recommending no changes to the current rate. The sewer rate for the first 10 units of water consumed per month will be \$5.00 per unit. The rate for consumption over 10 units per month will be \$5.50 per unit.

Sewer Rate
Represents no change in the rate from FY09.

One unit of water equals 100 cubic feet or 748 gallons.

| | FY10 Rate (per unit) |
|--|-------------------------|
| First 10 Units of Water Consumption / month | \$5.00 |
| Over 10 Units of Water Consumption /month | \$5.50 |

80% of all the residential customers fall into the 10 units or less tier.

The Table below depicts the monthly assessment for Sewer charges for an average residential customer.

| FY10 Sewer Rate (<i>No Proposed Increase</i>) Average Residential Customer (Monthly) Based on 250 gallons per day usage | |
|---|----------------------|
| | <u>Current Rates</u> |
| Monthly Consumption in units (1 unit = 100 cf = 748 gallons) | 10 |
| First Tier User Rate | \$5.00 |
| Sewer User Charge | \$50.00 |
| Monthly Sewer Usage Billing | \$50.00 |

BUDGET SUMMARY –SEWER DIVISION

The Sewer Division prepares its budget using an accrual basis of accounting represented in the first table “Budget Resolution” The cash requirements/rate model table represents the cash requirements for the FY10 and used to calculate the user rate.

Budget Resolution (Accrual Basis of Accounting)

| Budget for Resolution | FY08 Budget | FY08 Actual | FY09 Budget | Proposed FY10 Budget |
|------------------------------------|------------------|------------------|------------------|----------------------|
| Operations and Maintenance | 5,287,019 | 4,533,946 | 5,455,630 | 5,587,735 |
| Stock Materials | 27,500 | 0 | 27,500 | 27,500 |
| Depreciation | 1,377,332 | 1,179,168 | 1,324,221 | 1,389,272 |
| Interest on Debt | 990,599 | 909,494 | 1,723,625 | 1,132,019 |
| Equipment and Minor Capital Outlay | 264,043 | 58,160 | 264,043 | 259,043 |
| Budget Resolution | 7,946,493 | 6,680,768 | 8,795,019 | 8,395,569 |

Cash Requirements/Rate Model

| Adjustment from Budget to Cash Requirements | | | | |
|---|-------------------|-------------------|-------------------|-------------------|
| | FY08 | FY08 Actual | FY09 | Proposed FY10 |
| Budget Resolution | 7,946,493 | 6,680,768 | 8,795,019 | 8,395,569 |
| Capital Projects, Vehicle Replacement | 3,802,000 | 3,802,000 | 1,555,000 | 1,218,000 |
| Inventory | 32,500 | 5,933 | 32,500 | 32,500 |
| Principal Debt | 2,017,924 | 2,017,924 | 2,554,724 | 2,647,098 |
| less: Accrued Interest | | | (314,958) | (10,184) |
| less: Depreciation | (1,377,332) | (1,179,168) | (1,324,221) | (1,389,272) |
| less: Stock Materials | (27,500) | 0 | (27,500) | (27,500) |
| Cash Requirements | 12,394,085 | 11,327,457 | 11,270,564 | 10,866,211 |

| Estimated Revenues for Cash Requirements | FY08 | FY08 Actual | FY09 | Proposed FY10 |
|--|-------------------|-------------------|-------------------|-------------------|
| NON-User Fees | | | | |
| Fees | 454,000 | 462,324 | 524,000 | 278,500 |
| State Aid Grant | 1,534,067 | 1,524,934 | 1,701,035 | 1,353,279 |
| Pease Payback towards Debt | 183,774 | 183,774 | 178,583 | 173,392 |
| Special Agreements | 1,153,086 | 330,059 | 153,086 | 153,086 |
| Other Financing Sources | 2,304,391 | 0 | 2,715,120 | 2,791,550 |
| Subtotal | 5,629,318 | 2,501,092 | 5,271,824 | 4,749,807 |
| To be Raised by User Rates | 6,764,767 | 8,826,366 | 5,998,740 | 6,116,404 |
| Total Revenue for Cash Requirements | 12,394,085 | 11,327,457 | 11,270,564 | 10,866,211 |

User Rate Revenues

| Anticipated Billable Units: (1 unit equals 748 gallons) | Proposed Rates | Units | \$ |
|--|----------------|---------|------------------|
| Billable Units at Anticipated Revenue | \$5.00 | 506,546 | 2,532,730 |
| Billable Units at Anticipated Revenue | \$5.50 | 615,168 | 3,383,424 |
| Other Utilities | | | 200,250 |
| Total Anticipated User Revenues: | | | 6,116,404 |

CAPITAL PROJECTS:

The following tables represent capital projects and Rolling Stock equipment identified in Capital Improvement Plan, Appendix II and Rolling Stock Appendix I.

The items in the capital outlay table will be funded through sewer revenues.

| Capital Outlay | |
|--|----------------------|
| <u>Project Name</u> | <u>Amount</u> |
| Drainage Improvements for X-Country Sewer Lines | 50,000 |
| Wastewater Treatment Plant Upgrades | 500,000 |
| Mechanic St. Pump Station Seawall | 350,000 |
| Heritage Ave Forcemain Replacement | 50,000 |
| Long-Term Control Plan - NON SRF Eligible Component | 190,000 |
| Equipment: Camera Truck-S135, Vehicle-S134; Appendix 1 | 78,000 |
| TOTALS | 1,218,000 |

GOALS AND OBJECTIVES:

Goal: Continue work Wastewater Masterplan.

Objective:

- Develop options for bringing Peirce Island Treatment Plant into compliance with secondary permit.
- Develop options for nutrient removal in proposed treatment plant.
- Continue work on update to Combined Sewer Overflow Long Term Control Plan (LTCP).
- Implement interim measures that provide cost-effective water quality improvements at Wastewater discharges.

Goal: Continue operations improvement program in both collection and treatment areas.

Objectives:

- Continue Development of asset management program incorporating GIS based data platform.
- Use video line inspection program to refine asset management program.
- Implement Fats, Oil and Grease (FOG) reduction measures.
- Conduct equipment upgrades with focus on energy efficiency and decreased energy consumption.
- Continue preventative maintenance program.

Goal: Minimize impacts to the City’s waterways from combined sewer overflow.

Objectives:

- Formalize Illicit Discharge Detection Elimination
- Implement a series of projects to reduce inflow and infiltration.
- Upgrade pump stations and rehabilitate sewers.
- Continue implementation of Combined Sewer Overflow Long Term Control Plan (LTCP).

- Consider implementing a stormwater enterprise fund to provide for and fund the construction, operation, improvement and maintenance of stormwater facilities.

PROGRAMS AND SERVICES:

Wastewater Collection- Support and maintain infrastructure for residential and commercial wastewater collection services in Portsmouth, including Pease International Tradeport.

- Clean, maintain and repair sewer collection mains (100 miles) and manholes (1,650).
- Install new sewer mains.
- Maintain advanced professional certifications for infrastructure collection operations.

Wastewater Treatment- Provide wastewater treatment services, accepting flow from the City, Pease International Tradeport, and additional customers from bordering towns.

- Maintain two wastewater treatment plants (W.W.T.P) and 20 pump stations throughout Portsmouth and Pease.
- Maintain advanced technical professional certifications for operation of facilities.

Technical Services- Provide technical services to sewer division.

- Maintain and further develop geographic mapping and information system.
- Prepare maps and plans for information analysis and presentation.
- Analyze and investigate illicit discharges and pursue remediation.
- Prepare technical specifications, drawings, and estimates.
- Review projects in design phase and perform field survey work.
- Perform engineering inspections for sewer construction projects.

PERFORMANCE MEASURES:

| | <u>FY 07</u> | <u>FY 08</u> | <u>Estimated FY 09</u> | <u>Estimated FY 10</u> |
|--|--------------|--------------|----------------------------|----------------------------|
| Grease related sewer line incidents | 9 | 15 | 25 | 20 |
| Chemical costs for treatment of wastewater per million gallons | \$283/MG | \$272/MG | \$370/MG | \$370/MG |
| Pease WWTP, Kilowatt hours per million gallons treated | 4,593/MG | 4,905/MG | 4,564 | 4,795/MG |
| PIWWTP, Kilowatt hours per million gallons treated | 311/MG | 307/MG | 232/MG | 350/MG |
| Linear Feet of wastewater pipe cleaned and inspected | 34,320 LF | 52,800 LF | 66,000 LF | 70,000 LF |

| Grade | Job Description | Name | Department Request FY10 | Salary Allocated to Sewer |
|--|---|-------------------|-------------------------|---------------------------|
| Sewer Division | | | | |
| <u>Administration</u> | | | | |
| PMA Grade 24 E | Deputy PW Director | Allen, David | 91,031 | 45,516 |
| 1386 Grade 4 F | Secretary | Boucas, Elaine | 35,539 | 35,539 |
| PMA Grade 14 E | **Health Inspector | Shaw, Kristin | 56,225 | 33,735 |
| TOTAL | | | 182,795 | 114,790 |
| <u>Engineering</u> | | | | |
| PMA Grade 21 E | Engineer | Rice, Peter | 78,697 | 39,349 |
| PMA Grade 15 E | GIS Coordinator | Wise, Jason | 58,842 | 29,421 |
| | *Environmental Planner/Sustainability Coordinator | Britz, Peter | 29,422 | 14,711 |
| PMA Grade 15 E | Coordinator | Britz, Peter | 29,422 | 14,711 |
| 1386 Grade 8 G | CAD Tech | Siegel, James | 44,289 | 22,145 |
| 1386 Grade 8 3E/9F | CAD Tech | Cote, Svetlana | 42,816 | 21,408 |
| TOTAL | | | 254,066 | 127,034 |
| <u>Treatment</u> | | | | |
| SMA Grade 16 E | CPO | Anania, Paula | 62,091 | 62,091 |
| SMA Grade 12 E | ACPO | Taylor, Eric | 51,133 | 51,133 |
| SMA Grade 12 E | ACPO | Baker, Michael | 51,133 | 51,133 |
| 1386 Grade 10 E | Plant Oper 2 | Chomas, Roxanna | 46,200 | 46,200 |
| 1386 Grade10 9D/3E | Plant Oper 2 | England, John | 44,570 | 44,570 |
| 1386 Grade 8 5D/7E | Plant Oper 1 | Boston, Jeremy | 41,129 | 41,129 |
| 1386 Grade 8 E | Plant Oper 1 | Fallon, Douglas | 41,956 | 41,956 |
| 1386 Grade 8 E | Plant Oper 1 | Sanborn, Kathleen | 41,956 | 41,956 |
| 1386 Grade 8 E | Plant Oper 1 | Collins, Justin | 41,956 | 41,956 |
| 1386 Grade 8 G | Plant Oper 1 | Brescia, Barry | 44,295 | 44,295 |
| 1386 Grade 8 E | Plant Oper 1 | Fritz, Paul | 41,956 | 41,956 |
| 1386 Grade 6 E | Truck Driver 1 | McKenzie, Brett | 38,099 | 38,099 |
| 1386 Grade 9 G | Lab Tech | Hatin, Bonnie | 46,481 | 23,241 |
| TOTAL | | | 592,955 | 569,715 |
| <u>Collection</u> | | | | |
| SMA Grade 15 E | Gen Foreman | Jenkins, Michael | 59,136 | 29,568 |
| SMA Grade 13 4D/8E | Sewer Foreman | Adams, John | 52,822 | 52,822 |
| 1386 Grade 8 8E/4F | Equip Oper 1 | Gilbert, Jonathon | 42,340 | 42,340 |
| 1386 Grade 7 E | Utility Mech | Sparks, Douglas | 39,972 | 39,972 |
| 1386 Grade 7 G | Utility Mech | Hatch, Craig | 42,201 | 42,201 |
| 1386 Grade 7 E | Utility Mech | Snyder, Karl | 39,972 | 39,972 |
| 1386 Grade 6 F | W/S Meter Reader | Kecy, Daniel | 39,146 | 19,573 |
| 1386 Grade 6 E | W/S Meter Reader | Desfosses, Lori | 38,099 | 19,049 |
| 1386 Grade 5 E | Laborer | Fate, Donald | 36,306 | 36,306 |
| TOTAL | | | 389,994 | 321,803 |
| TOTAL FULL TIME | | | 1,419,810 | 1,133,342 |
| | Laborer | Summer Laborer | 5,742 | 5,742 |
| | Eng Tech | Vacant | 8,776 | 8,776 |
| TOTAL PART TIME | | | 14,518 | 14,518 |
| TOTAL SEWER DEPARTMENT SALARIES | | | 1,434,328 | 1,147,860 |

*25% FUNDED BY WATER, 25% FUNDED BY SEWER, 20% FUNDED BY THE COAKLEY LANDFILL TRUST AND 30% FUNDED BY THE GENERAL FUND.

**60% FUNDED BY SEWER, 40% FUND BY THE GENERAL FUND HEALTH DEPARTMENT.

| | FY08 | FY08 | FY09 | FY10 | FY10 | FY10 |
|--|--------|--------|--------|-----------------------|-----------------------------|--------------------------|
| | BUDGET | ACTUAL | BUDGET | DEPARTMENT REQUEST | CITY MANAGER RECOMMENDED | CITY COUNCIL APPROVED |

SEWER DEPARTMENT

**ADMINISTRATION PORTSMOUTH
51-751-610-51-100-491**

| | | | | | | | |
|--------|---------------------------|------------------|------------------|------------------|------------------|------------------|---|
| 011001 | REGULAR SALARIES | 95,663 | 95,145 | 96,994 | 97,673 | 97,673 | - |
| 011061 | INSURANCE REIMBURSEMENT | 10,855 | 10,044 | 13,300 | 13,300 | 13,300 | - |
| 011064 | COLL BARG CONTINGENCY | - | - | 50,691 | 50,691 | 50,691 | - |
| 011065 | COLL BARGAIN CONTINGENCY | - | - | - | 38,713 | 38,713 | - |
| 014041 | OVERTIME | 1,017 | 722 | 1,017 | 1,500 | 1,500 | - |
| 015001 | LONGEVITY | 4,197 | 4,496 | 5,260 | 6,237 | 6,237 | - |
| 016001 | LEAVE AT TERMINATION | 20,000 | 52,570 | 42,000 | 42,000 | 42,000 | - |
| 019002 | ANTICIPATED EXPENSES | - | - | - | - | - | - |
| 021001 | INSURANCE-HEALTH | 279,942 | 212,635 | 316,673 | 300,575 | 300,575 | - |
| 021101 | INSURANCE-DENTAL | 20,839 | 16,628 | 21,420 | 20,949 | 20,949 | - |
| 021501 | INSURANCE-LIFE | 2,889 | 2,423 | 2,862 | 2,862 | 2,862 | - |
| 021601 | INSURANCE-DISABILITY | 6,473 | 6,706 | 7,751 | 7,751 | 7,751 | - |
| 021801 | INS CONTRACTUAL STIPEND | - | - | - | 8,262 | 8,262 | - |
| 022001 | SOCIAL SECURITY | 6,030 | 13,282 | 6,112 | 6,099 | 6,099 | - |
| 022501 | MEDICARE | 1,410 | 1,872 | 1,429 | 1,431 | 1,431 | - |
| 023001 | RETIREMENT | 6,623 | 11,160 | 7,921 | 9,497 | 9,497 | - |
| 026002 | INSURANCE-WORKERS COMP | 11,606 | 11,606 | 18,362 | 11,563 | 11,563 | - |
| 030101 | PROF SERVICES-AUDIT | 7,500 | 7,500 | 7,500 | 7,500 | 7,500 | - |
| 031002 | PROF SERVICES-ENGINEERING | 5,000 | 2,436 | 5,000 | 5,000 | 5,000 | - |
| 032001 | PROF SERVICES-O/S COUNSEL | 20,000 | 31,507 | 30,000 | 30,000 | 30,000 | - |
| 033002 | ADMINISTRATIVE OVERHEAD | 378,799 | 378,799 | 382,877 | 388,529 | 388,529 | - |
| 033003 | OVERHEAD APPLIED | (15,433) | - | (15,433) | (15,433) | (15,433) | - |
| 034001 | LOCK BOXES | 20,000 | 18,034 | 30,000 | 30,000 | 30,000 | - |
| 034103 | TELEPHONE | 1,000 | 742 | 1,000 | 1,000 | 1,000 | - |
| 034201 | OUTSIDE PROGRAMMING | 4,000 | - | 4,000 | 4,000 | 4,000 | - |
| 035004 | OCCUPATIONAL HEALTH | - | 596 | - | 750 | 750 | - |
| 039054 | PROF/SERVICES-CONTRACT | 37,500 | 9,044 | 37,500 | 37,500 | 37,500 | - |
| 043024 | REPAIRS-VEHICLE | 5,000 | 229 | 5,000 | 5,000 | 5,000 | - |
| 043026 | REPAIRS-COMPUTER EQUIP | - | - | - | - | - | - |
| 043027 | REPAIRS-OFFICE EQUIPMENT | - | - | - | - | - | - |
| 043028 | MAINTENANCE | 8,000 | 581 | 16,500 | 16,500 | 16,500 | - |
| 044001 | RENTAL AND LEASES-POSTAGE | - | - | - | - | - | - |
| 044002 | RENTAL OTHER EQUIPMENT | - | - | - | - | - | - |
| 048002 | PROPERTY INSURANCE | 22,950 | 21,292 | 25,320 | 30,003 | 30,003 | - |
| 053001 | ADVERTISING | 5,000 | 5,150 | 10,000 | 10,000 | 10,000 | - |
| 054003 | STATE CERTIFICATION | 150 | - | 150 | 150 | 150 | - |
| 054050 | TRAINING-EDUCATION | 500 | 773 | 500 | 500 | 500 | - |
| 055050 | PRINTING | 1,500 | 1,545 | 1,500 | 1,500 | 1,500 | - |
| 056001 | DUES PROFESSIONAL ORGANIZ | 500 | - | 500 | 500 | 500 | - |
| 057101 | TRAVEL AND CONFERENCE | 100 | 461 | 100 | 100 | 100 | - |
| 061001 | FIRST AID | - | 65 | - | - | - | - |
| 062001 | OFFICE SUPPLIES | 2,500 | 131 | 2,500 | 2,500 | 2,500 | - |
| 062005 | PRINTING SUPPLIES | 100 | - | 100 | 100 | 100 | - |
| 062011 | OPERATING SUPPLIES | 1,000 | 74 | 1,000 | 1,000 | 1,000 | - |
| 062501 | POSTAGE | 7,200 | 2,941 | 7,200 | 7,200 | 7,200 | - |
| 063501 | GASOLINE | 28,000 | 41,045 | 35,000 | 42,000 | 42,000 | - |
| 063601 | DIESEL FUEL | - | - | - | - | - | - |
| 067001 | BOOKS & PERIODICALS | 100 | 96 | 100 | 100 | 100 | - |
| 074000 | MACHINERY AND EQUIPMENT | 11,500 | 130 | 11,500 | 11,500 | 11,500 | - |
| 081004 | ABATEMENTS | 17,000 | 10,860 | 8,000 | 8,000 | 8,000 | - |
| 081031 | FEMA REIMBURSEMENT | - | - | - | - | - | - |
| 086001 | DEPRECIATION | 82,248 | 74,248 | 82,248 | 82,248 | 82,248 | - |
| 098102 | INTEREST-BONDED DEBT | 469,892 | 388,787 | 1,112,255 | 775,716 | 775,716 | - |
| | | 1,589,150 | 1,436,355 | 2,393,709 | 2,102,566 | 2,102,566 | - |

**ADMINISTRATION PEASE
51-751-610-51-500-491**

| | | | | | | | |
|--------|---------------------------|--------|--------|--------|--------|--------|---|
| 011001 | REGULAR SALARIES | 16,882 | 17,183 | 17,117 | 17,117 | 17,117 | - |
| 011064 | COLL BARG CONTINGENCY | - | - | - | - | - | - |
| 014041 | OVERTIME | 179 | 153 | 179 | 500 | 500 | - |
| 015001 | LONGEVITY | 741 | 742 | 928 | 1,101 | 1,101 | - |
| 019002 | ANTICIPATED EXPENSES | - | - | - | - | - | - |
| 021001 | INSURANCE-HEALTH | 49,402 | 26,829 | 55,884 | 53,043 | 53,043 | - |
| 021101 | INSURANCE-DENTAL | 3,677 | 3,422 | 3,780 | 3,697 | 3,697 | - |
| 021501 | INSURANCE-LIFE | 510 | 341 | 505 | 505 | 505 | - |
| 021601 | INSURANCE-DISABILITY | 1,142 | 1,126 | 1,367 | 1,367 | 1,367 | - |
| 022001 | SOCIAL SECURITY | 1,064 | 2,443 | 1,079 | 1,077 | 1,077 | - |
| 022501 | MEDICARE | 249 | 333 | 252 | 247 | 247 | - |
| 023001 | RETIREMENT | 1,169 | 2,414 | 1,188 | 1,024 | 1,024 | - |
| 026002 | INSURANCE-WORKERS COMP | 2,048 | 2,048 | 3,240 | 2,041 | 2,041 | - |
| 030101 | PROF SERVICES-AUDIT | 132 | 132 | 132 | 132 | 132 | - |
| 032001 | PROF SERVICES-O/S COUNSEL | 1,000 | - | 1,000 | 1,000 | 1,000 | - |
| 033002 | ADMINISTRATIVE OVERHEAD | 66,847 | 66,847 | 67,567 | 68,564 | 68,564 | - |
| 034001 | LOCK BOXES | 5,000 | 3,844 | 10,000 | 10,000 | 10,000 | - |
| 034103 | TELEPHONE | 100 | 149 | 100 | 100 | 100 | - |
| 034201 | OUTSIDE PROGRAMMING | 100 | - | 100 | 100 | 100 | - |
| 039001 | PROFESSIONAL SERVICES | 100 | - | 100 | 100 | 100 | - |
| 043024 | REPAIRS-VEHICLE | 275 | - | 275 | 275 | 275 | - |
| 043026 | REPAIRS-COMPUTER EQUIP | 100 | - | 100 | 100 | 100 | - |
| 043027 | REPAIRS-OFFICE EQUIPMENT | 20 | - | 20 | 20 | 20 | - |
| 043028 | MAINTENANCE | 750 | - | 750 | 750 | 750 | - |
| 048002 | PROPERTY INSURANCE | 4,050 | 4,050 | 4,468 | 5,295 | 5,295 | - |
| 053001 | ADVERTISING | 400 | 412 | 400 | 400 | 400 | - |
| 054003 | STATE CERTIFICATION | 100 | - | 100 | 100 | 100 | - |
| 054050 | TRAINING-EDUCATION | 50 | - | 50 | 50 | 50 | - |
| 055050 | PRINTING | 175 | 239 | 175 | 175 | 175 | - |

| | FY08 | FY08 | FY09 | FY10 | FY10 | FY10 |
|-------------------------------------|----------------|----------------|----------------|-----------------------|-----------------------------|--------------------------|
| | BUDGET | ACTUAL | BUDGET | DEPARTMENT REQUEST | CITY MANAGER RECOMMENDED | CITY COUNCIL APPROVED |
| 056001 DUES PROFESSIONAL ORGANIZ | 20 | - | 20 | 20 | 20 | - |
| 057101 TRAVEL AND CONFERENCE | 20 | 69 | 20 | 20 | 20 | - |
| 062001 OFFICE SUPPLIES | 400 | - | 400 | 400 | 400 | - |
| 062011 OPERATING SUPPLIES | 30 | - | 30 | 30 | 30 | - |
| 062501 POSTAGE | 900 | 361 | 900 | 900 | 900 | - |
| 063501 GASOLINE | 5,000 | 6,255 | 5,000 | 8,000 | 8,000 | - |
| 067001 BOOKS & PERIODICALS | 10 | 8 | 10 | 10 | 10 | - |
| 074000 MACHINERY AND EQUIPMENT | 300 | - | 300 | 300 | 300 | - |
| 086001 DEPRECIATION | 36,778 | 36,778 | 36,778 | 36,778 | 36,778 | - |
| | 199,720 | 176,178 | 214,314 | 215,338 | 215,338 | - |
| ENGINEERING ADMIN PORTSMOUTH | | | | | | |
| 51-751-610-52-100-491 | | | | | | |
| 011001 REGULAR SALARIES | 106,761 | 84,400 | 107,054 | 108,142 | 108,142 | - |
| 012001 PART TIME SALARIES | 5,742 | 3 | 5,742 | 5,742 | 5,742 | - |
| 014041 OVERTIME | 624 | - | - | - | - | - |
| 022001 SOCIAL SECURITY | 7,128 | 5,035 | 7,108 | 6,892 | 6,892 | - |
| 022501 MEDICARE | 1,667 | 1,178 | 1,662 | 1,567 | 1,567 | - |
| 023001 RETIREMENT | 7,439 | 7,686 | 7,416 | 9,112 | 9,112 | - |
| 031002 PROF SERVICES-ENGINEERING | 15,000 | 40,720 | 10,000 | 10,000 | 10,000 | - |
| 034103 TELEPHONE | 700 | 468 | 700 | 700 | 700 | - |
| 034104 CELLULAR PHONES | 1,500 | 534 | 1,500 | 1,500 | 1,500 | - |
| 039012 CAP OUTLAY-CONTRACT-BILL | - | - | - | - | - | - |
| 039054 PROF/SERVICES-CONTRACT | 45,000 | 2,621 | 45,000 | 45,000 | 45,000 | - |
| 041308 SLUDGE DISPOSAL | 5,000 | 860 | 5,000 | 5,000 | 5,000 | - |
| 043028 MAINTENANCE | 500 | - | 500 | 500 | 500 | - |
| 054003 STATE CERTIFICATION | 250 | - | 250 | 250 | 250 | - |
| 054050 TRAINING-EDUCATION | 1,200 | 242 | 1,200 | 1,200 | 1,200 | - |
| 055003 UPDATING PLATS & MAPS | 1,000 | - | 1,000 | 1,000 | 1,000 | - |
| 056001 DUES PROFESSIONAL ORGANIZ | 600 | 233 | 600 | 600 | 600 | - |
| 057101 TRAVEL AND CONFERENCE | 400 | 1,916 | 400 | 400 | 400 | - |
| 057102 TRAVEL REIMBURSEMENT | - | - | - | - | - | - |
| 062001 OFFICE SUPPLIES | 2,000 | 1,297 | 2,000 | 2,000 | 2,000 | - |
| 062002 ENGINEERING SUPPLIES | - | - | - | - | - | - |
| 062003 MAPPING SUPPLIES | - | - | - | - | - | - |
| 062005 PRINTING SUPPLIES | 3,000 | 1,034 | 3,000 | 3,000 | 3,000 | - |
| 062007 COMPUTER/PRINTER SUPPLIES | 3,000 | 2,281 | 3,000 | 3,000 | 3,000 | - |
| 062010 COPYING SUPPLIES | - | - | - | - | - | - |
| 062011 OPERATING SUPPLIES | 100 | 805 | 100 | 100 | 100 | - |
| 062501 POSTAGE | - | - | - | - | - | - |
| 063501 GASOLINE | - | - | - | - | - | - |
| 063601 DIESEL FUEL | - | - | - | - | - | - |
| 067001 BOOKS & PERIODICALS | 300 | 171 | 300 | 300 | 300 | - |
| 074000 MACHINERY AND EQUIPMENT | 9,000 | - | 9,000 | 9,000 | 9,000 | - |
| 075001 FURNITURE AND FIXTURES | - | - | - | - | - | - |
| | 217,911 | 151,487 | 212,532 | 215,005 | 215,005 | - |
| ENGINEERING ADMIN PEASE | | | | | | |
| 51-751-610-52-500-491 | | | | | | |
| 011001 REGULAR SALARIES | 18,840 | 18,644 | 18,892 | 18,892 | 18,892 | - |
| 012001 PART TIME SALARIES | - | - | - | - | - | - |
| 014041 OVERTIME | 110 | - | - | - | - | - |
| 022001 SOCIAL SECURITY | 1,195 | 892 | 1,192 | 1,155 | 1,155 | - |
| 022501 MEDICARE | 280 | 208 | 279 | 315 | 315 | - |
| 023001 RETIREMENT | 1,313 | 1,320 | 1,309 | 2,687 | 2,687 | - |
| 031002 PROF SERVICES-ENGINEERING | 7,000 | 9,975 | 10,000 | 10,000 | 10,000 | - |
| 034101 PAGERS | - | - | - | - | - | - |
| 034103 TELEPHONE | 100 | 91 | 100 | 100 | 100 | - |
| 039051 SECURITY/ALARMS | - | - | - | - | - | - |
| 043018 REPAIRS-EQUIPMENT | - | - | - | - | - | - |
| 043026 REPAIRS-COMPUTER EQUIP | - | - | - | - | - | - |
| 043027 REPAIRS-OFFICE EQUIPMENT | - | - | - | - | - | - |
| 043028 MAINTENANCE | 20 | - | 20 | 20 | 20 | - |
| 044002 RENTAL OTHER EQUIPMENT | - | - | - | - | - | - |
| 053001 ADVERTISING | - | - | - | - | - | - |
| 054003 STATE CERTIFICATION | 10 | - | 10 | 10 | 10 | - |
| 054050 TRAINING-EDUCATION | 150 | - | 150 | 150 | 150 | - |
| 055050 PRINTING | - | - | - | - | - | - |
| 056001 DUES PROFESSIONAL ORGANIZ | 30 | - | 30 | 30 | 30 | - |
| 057101 TRAVEL AND CONFERENCE | 50 | 103 | 50 | 50 | 50 | - |
| 057102 TRAVEL REIMBURSEMENT | - | - | - | - | - | - |
| 062001 OFFICE SUPPLIES | 200 | 271 | 200 | 200 | 200 | - |
| 062002 ENGINEERING SUPPLIES | - | - | - | - | - | - |
| 062003 MAPPING SUPPLIES | - | - | - | - | - | - |
| 062005 PRINTING SUPPLIES | - | 178 | - | - | - | - |
| 062007 COMPUTER/PRINTER SUPPLIES | - | 404 | - | - | - | - |
| 062010 COPYING SUPPLIES | - | - | - | - | - | - |
| 062011 OPERATING SUPPLIES | 30 | - | 30 | 30 | 30 | - |
| 062501 POSTAGE | - | - | - | - | - | - |
| 067001 BOOKS & PERIODICALS | 30 | - | 30 | 30 | 30 | - |
| 074000 MACHINERY AND EQUIPMENT | 1,000 | - | 1,000 | 1,000 | 1,000 | - |
| | 30,358 | 32,086 | 33,292 | 34,669 | 34,669 | - |

| | FY08 | FY08 | FY09 | FY10 | FY10 | FY10 |
|-----------------------------------|---------------------------|------------------|------------------|-----------------------|-----------------------------|--------------------------|
| | BUDGET | ACTUAL | BUDGET | DEPARTMENT REQUEST | CITY MANAGER RECOMMENDED | CITY COUNCIL APPROVED |
| TREATMENT PLANT PORTSMOUTH | | | | | | |
| 51-751-670-54-181-491 | | | | | | |
| 011001 | REGULAR SALARIES | 286,941 | 343,223 | 300,221 | 301,164 | - |
| 011045 | SALARIES - SLUDGE REMOVAL | - | - | - | - | - |
| 011060 | ON CALL MONITORING | 15,443 | 12,754 | 14,237 | 14,237 | - |
| 012001 | PART TIME SALARIES | - | 1,835 | - | - | - |
| 014041 | OVERTIME | 29,632 | 26,941 | 27,990 | 28,490 | - |
| 022001 | SOCIAL SECURITY | 20,871 | 22,879 | 21,519 | 21,477 | - |
| 022501 | MEDICARE | 4,881 | 5,351 | 5,032 | 5,046 | - |
| 023001 | RETIREMENT | 22,925 | 33,432 | 24,419 | 34,408 | - |
| 034101 | PAGERS | 600 | - | 600 | 600 | - |
| 034103 | TELEPHONE | 8,000 | 6,876 | 8,000 | 8,000 | - |
| 034104 | CELLULAR PHONES | 4,500 | 2,935 | 4,500 | 4,500 | - |
| 039001 | PROFESSIONAL SERVICES | 5,000 | 4,590 | 20,000 | 20,000 | - |
| 039051 | SECURITY/ALARMS | 500 | - | 500 | 500 | - |
| 039054 | PROF/SERVICES-CONTRACT | - | - | - | - | - |
| 041002 | ELECTRICITY | 115,000 | 68,778 | 90,000 | 90,000 | - |
| 041101 | NATURAL GAS | 12,000 | 18,144 | 12,000 | 12,000 | - |
| 041102 | HEATING OIL | 10,000 | 10,717 | 10,000 | 10,000 | - |
| 041103 | PROPANE GAS | 2,400 | - | 2,400 | 2,400 | - |
| 041205 | WATER /SEWER FEES | 40,000 | 37,696 | 40,000 | 40,000 | - |
| 041308 | SLUDGE DISPOSAL | 245,000 | 220,618 | 245,000 | 245,000 | - |
| 041309 | GRIT AND GREASE REMOVAL | 62,000 | 34,928 | 62,000 | 62,000 | - |
| 043001 | REPAIRS-STRUCTURAL | 3,000 | - | 3,000 | 3,000 | - |
| 043002 | REPAIRS-ELECTRICAL | - | - | - | - | - |
| 043004 | REPAIRS-PLUMBING | 5,000 | - | 5,000 | 5,000 | - |
| 043005 | REPAIRS-HEATING SYSTEM | - | 105 | - | - | - |
| 043018 | REPAIRS-EQUIPMENT | 60,000 | 62,287 | 60,000 | 75,000 | - |
| 043021 | REPAIRS-FIRE ALARM SYS | 1,000 | - | 8,000 | 8,000 | - |
| 043024 | REPAIRS-VEHICLE | 17,000 | 22,085 | 17,000 | 17,000 | - |
| 043025 | REPAIRS-BLDINGS & GROUNDS | 25,000 | 12,797 | 25,000 | 10,000 | - |
| 043026 | REPAIRS-COMPUTER EQUIP | - | - | - | - | - |
| 043027 | REPAIRS-OFFICE EQUIPMENT | - | - | - | - | - |
| 043028 | MAINTENANCE | 16,000 | 14,131 | 16,000 | 16,000 | - |
| 043031 | SCADA EQUIPMENT | - | 5,252 | 20,000 | 20,000 | - |
| 043032 | GENERATOR MAINTENANCE | 2,000 | 800 | 2,000 | 2,000 | - |
| 044002 | RENTAL OTHER EQUIPMENT | - | 4,864 | - | - | - |
| 053001 | ADVERTISING | - | - | - | - | - |
| 054003 | STATE CERTIFICATION | 1,000 | 320 | 1,000 | 1,000 | - |
| 054050 | TRAINING-EDUCATION | 6,000 | 1,181 | 6,000 | 6,000 | - |
| 056001 | DUES PROFESSIONAL ORGANIZ | 1,000 | 491 | 1,000 | 1,000 | - |
| 056007 | OPERATIONAL PERMITS | - | - | - | - | - |
| 057101 | TRAVEL AND CONFERENCE | 1,000 | - | 1,000 | 1,000 | - |
| 057102 | TRAVEL REIMBURSEMENT | 2,500 | 1,679 | 2,500 | 2,500 | - |
| 061001 | FIRST AID | 1,000 | 418 | 1,000 | 1,000 | - |
| 062001 | OFFICE SUPPLIES | 2,000 | 714 | 2,000 | 2,000 | - |
| 062011 | OPERATING SUPPLIES | 21,000 | 5,835 | 21,000 | 16,000 | - |
| 063800 | MATERIALS-CHEMICALS | 700,000 | 609,319 | 725,000 | 798,000 | - |
| 066001 | VEHICLE REPAIRS | - | - | - | - | - |
| 067001 | BOOKS & PERIODICALS | - | - | - | - | - |
| 068001 | CLOTHING ALLOWANCE | - | - | - | - | - |
| 068002 | CLOTHING | 6,500 | 5,256 | 6,500 | 6,500 | - |
| 068003 | PROTECTIVE CLOTHING | 2,500 | 1,519 | 2,500 | 2,500 | - |
| 068030 | TOOLS | 6,000 | 4,598 | 6,000 | 6,000 | - |
| 073000 | OTHER IMPROVEMENTS | - | - | - | - | - |
| 074000 | MACHINERY AND EQUIPMENT | 55,000 | 11,994 | 55,000 | 55,000 | - |
| 086001 | DEPRECIATION | 416,774 | 311,774 | 356,774 | 356,774 | - |
| 098102 | INTEREST-BONDED DEBT | 334,163 | 334,163 | 388,537 | 198,458 | - |
| | | 2,571,130 | 2,263,279 | 2,620,229 | 2,509,554 | 2,509,554 |

TREATMENT PLANT PEASE
51-751-670-54-581-491

| | | | | | | |
|--------|---------------------------|---------|---------|---------|---------|---|
| 011001 | REGULAR SALARIES | 154,889 | 106,083 | 130,984 | 130,984 | - |
| 011045 | SALARIES - SLUDGE REMOVAL | - | - | - | - | - |
| 011060 | ON CALL MONITORING | 2,008 | - | - | - | - |
| 012001 | PART TIME SALARIES | - | - | - | - | - |
| 014041 | OVERTIME | 15,375 | 23,202 | 20,823 | 20,828 | - |
| 018031 | CERTIFICATION STIPEND | - | - | - | - | - |
| 022001 | SOCIAL SECURITY | 10,830 | 7,778 | 9,536 | 9,536 | - |
| 022501 | MEDICARE | 2,533 | 1,819 | 2,230 | 2,230 | - |
| 023001 | RETIREMENT | 11,895 | 11,286 | 10,877 | 13,377 | - |
| 031002 | PROF SERVICES-ENGINEERING | - | - | - | 15,000 | - |
| 034101 | PAGERS | 300 | - | 300 | 300 | - |
| 034103 | TELEPHONE | 2,000 | 2,080 | 2,000 | 2,000 | - |
| 039051 | SECURITY/ALARMS | - | - | - | - | - |
| 039054 | PROF/SERVICES-CONTRACT | - | 18,050 | - | - | - |
| 041002 | ELECTRICITY | 150,000 | 132,803 | 160,000 | 150,000 | - |
| 041101 | NATURAL GAS | 18,000 | 25,931 | 18,000 | 18,000 | - |
| 041102 | HEATING OIL | - | - | - | - | - |
| 041103 | PROPANE GAS | - | - | - | - | - |
| 041205 | WATER /SEWER FEES | 6,000 | 11,911 | 6,000 | 6,000 | - |
| 041301 | RUBBISH REMOVAL | 1,000 | 695 | 1,000 | 1,000 | - |
| 041308 | SLUDGE DISPOSAL | 75,000 | 59,408 | 75,000 | 60,000 | - |
| 043002 | REPAIRS-ELECTRICAL | 500 | 416 | 500 | 500 | - |
| 043004 | REPAIRS-PLUMBING | - | - | - | - | - |
| 043005 | REPAIRS-HEATING SYSTEM | - | - | - | - | - |
| 043018 | REPAIRS-EQUIPMENT | 75,000 | 56,581 | 100,000 | 75,000 | - |
| 043024 | REPAIRS-VEHICLE | - | 152 | - | - | - |
| 043025 | REPAIRS-BLDINGS & GROUNDS | 20,000 | 6,069 | 20,000 | 20,000 | - |
| 043026 | REPAIRS-COMPUTER EQUIP | - | - | - | - | - |

| | FY08 | FY08 | FY09 | FY10 | FY10 | FY10 |
|--------|----------------------------|------------------|----------------|-----------------------|-----------------------------|--------------------------|
| | BUDGET | ACTUAL | BUDGET | DEPARTMENT REQUEST | CITY MANAGER RECOMMENDED | CITY COUNCIL APPROVED |
| 043027 | REPAIRS-OFFICE EQUIPMENT | - | - | - | - | - |
| 043028 | MAINTENANCE | 20,000 | 5,653 | 20,000 | 20,000 | - |
| 043031 | SCADA EQUIPMENT | 25,000 | 7,673 | 20,000 | 20,000 | - |
| 043032 | GENERATOR MAINTENANCE | 1,000 | - | 1,000 | 1,000 | - |
| 044002 | RENTAL OTHER EQUIPMENT | 19,000 | 16,128 | 19,000 | 19,000 | - |
| 048002 | PROPERTY INSURANCE | - | - | - | - | - |
| 053001 | ADVERTISING | - | - | - | - | - |
| 054003 | STATE CERTIFICATION | - | - | - | - | - |
| 054050 | TRAINING-EDUCATION | 500 | - | 500 | 500 | - |
| 055050 | PRINTING | - | - | - | - | - |
| 056001 | DUES PROFESSIONAL ORGANIZ | 200 | - | 200 | 200 | - |
| 056007 | OPERATIONAL PERMITS | - | - | - | - | - |
| 057102 | TRAVEL REIMBURSEMENT | - | - | - | - | - |
| 061001 | FIRST AID | 350 | 160 | 350 | 350 | - |
| 062001 | OFFICE SUPPLIES | 1,200 | 848 | 1,200 | 1,200 | - |
| 062005 | PRINTING SUPPLIES | - | - | - | - | - |
| 062011 | OPERATING SUPPLIES | 6,000 | 1,995 | 6,000 | 6,000 | - |
| 063501 | GASOLINE | - | - | - | - | - |
| 063601 | DIESEL FUEL | 600 | 286 | 600 | 600 | - |
| 063800 | MATERIALS-CHEMICALS | 45,000 | 53,267 | 55,000 | 60,000 | - |
| 067001 | BOOKS & PERIODICALS | - | - | - | - | - |
| 068001 | CLOTHING ALLOWANCE | - | - | - | - | - |
| 068002 | CLOTHING | 1,000 | 269 | 1,000 | 1,000 | - |
| 068003 | PROTECTIVE CLOTHING | 1,000 | 518 | 1,000 | 1,000 | - |
| 068030 | TOOLS | 2,000 | 1,200 | 2,000 | 2,000 | - |
| 073000 | OTHER IMPROVEMENTS | 25,000 | 25,250 | 25,000 | 25,000 | - |
| 074000 | MACHINERY AND EQUIPMENT | 25,000 | - | 25,000 | 25,000 | - |
| 086001 | DEPRECIATION | 234,978 | 220,978 | 228,778 | 228,778 | - |
| 098102 | INTEREST-BONDED DEBT | 92,214 | 92,214 | 110,263 | 77,344 | - |
| 098104 | INTEREST ON BOND, FROM PDA | 94,330 | 94,330 | 112,570 | 80,501 | - |
| | | 1,139,702 | 985,037 | 1,186,711 | 1,094,228 | 1,094,228 |

LABORATORY PORTSMOUTH
51-751-670-55-181-491

| | | | | | | |
|--------|---------------------------|----------------|---------------|---------------|---------------|---------------|
| 011001 | REGULAR SALARIES | 5,705 | 12,534 | 14,237 | 14,237 | - |
| 014041 | OVERTIME | 559 | 1,355 | - | - | - |
| 022001 | SOCIAL SECURITY | 394 | 938 | 896 | 827 | - |
| 022501 | MEDICARE | 92 | 219 | 210 | 210 | - |
| 023001 | RETIREMENT | 433 | 1,373 | 984 | 984 | - |
| 039010 | PROF/SERVICES-LAB TESTS | 12,000 | 3,652 | 20,000 | 20,000 | - |
| 039019 | RIVER TESTING | 100,000 | - | - | - | - |
| 039054 | PROF/SERVICES-CONTRACT | - | - | - | - | - |
| 043001 | REPAIRS-STRUCTURAL | 3,500 | - | 3,500 | 3,500 | - |
| 043018 | REPAIRS-EQUIPMENT | 2,000 | - | 2,000 | 2,000 | - |
| 043028 | MAINTENANCE | 1,500 | 1,485 | 1,500 | 1,500 | - |
| 054050 | TRAINING-EDUCATION | 50 | 250 | 50 | 50 | - |
| 056001 | DUES PROFESSIONAL ORGANIZ | - | - | - | - | - |
| 056007 | OPERATIONAL PERMITS | - | - | - | - | - |
| 057102 | TRAVEL REIMBURSEMENT | - | - | - | - | - |
| 062001 | OFFICE SUPPLIES | 600 | 100 | 600 | 600 | - |
| 062011 | OPERATING SUPPLIES | 15,000 | 13,546 | 15,000 | 15,000 | - |
| 067001 | BOOKS & PERIODICALS | - | - | - | - | - |
| 068001 | CLOTHING ALLOWANCE | - | - | - | - | - |
| 068002 | CLOTHING | - | - | - | - | - |
| 074000 | MACHINERY AND EQUIPMENT | 7,000 | 5,772 | 7,000 | 7,000 | - |
| 075000 | FURNITURE AND FIXTURES | 10,000 | 212 | 10,000 | 10,000 | - |
| | | 158,833 | 41,434 | 75,977 | 75,908 | 75,908 |

LABORATORY PEASE
51-751-670-55-581-491

| | | | | | | |
|--------|---------------------------|---------------|---------------|---------------|---------------|---------------|
| 011001 | REGULAR SALARIES | 14,263 | 1,817 | 5,695 | 5,695 | - |
| 014041 | OVERTIME | 1,398 | 64 | - | - | - |
| 022001 | SOCIAL SECURITY | 985 | 4 | 358 | 358 | - |
| 022501 | MEDICARE | 230 | 1 | 84 | 84 | - |
| 023001 | RETIREMENT | 1,081 | 6 | 394 | 394 | - |
| 039010 | PROF/SERVICES-LAB TESTS | 20,000 | 5,812 | 20,000 | 20,000 | - |
| 043018 | REPAIRS-EQUIPMENT | 2,000 | 1,029 | 2,000 | 2,000 | - |
| 043028 | MAINTENANCE | 1,000 | - | 1,000 | 1,000 | - |
| 053001 | ADVERTISING | - | - | - | - | - |
| 054050 | TRAINING-EDUCATION | - | - | - | - | - |
| 056001 | DUES PROFESSIONAL ORGANIZ | - | - | - | - | - |
| 056007 | OPERATIONAL PERMITS | - | - | - | - | - |
| 057102 | TRAVEL REIMBURSEMENT | - | - | - | - | - |
| 062011 | OPERATING SUPPLIES | 20,000 | 16,921 | 25,000 | 25,000 | - |
| 062501 | POSTAGE | - | - | - | - | - |
| 067001 | BOOKS & PERIODICALS | - | - | - | - | - |
| 068001 | CLOTHING ALLOWANCE | - | - | - | - | - |
| 068002 | CLOTHING | - | - | - | - | - |
| 068003 | PROTECTIVE CLOTHING | - | - | - | - | - |
| 068016 | MATERIALS | - | - | - | - | - |
| 068030 | TOOLS | - | 456 | - | - | - |
| 074000 | MACHINERY AND EQUIPMENT | 20,000 | 13,250 | 20,000 | 20,000 | - |
| | | 80,957 | 39,358 | 74,531 | 74,531 | 74,531 |

LIFT STATIONS PORTSMOUTH
51-751-670-51-141-491

| | | | | | | |
|--------|----------------------|--------|--------|--------|--------|---|
| 011001 | REGULAR SALARIES | 74,170 | 48,998 | 68,339 | 68,339 | - |
| 011056 | CAPITAL OUTLAY-LABOR | - | - | - | - | - |

| | FY08 | FY08 | FY09 | FY10 | FY10 | FY10 |
|----------------------------------|----------------|----------------|----------------|-----------------------|-----------------------------|--------------------------|
| | BUDGET | ACTUAL | BUDGET | DEPARTMENT REQUEST | CITY MANAGER RECOMMENDED | CITY COUNCIL APPROVED |
| 012001 PART TIME SALARIES | - | - | - | - | - | - |
| 014041 OVERTIME | 10,272 | 13,456 | 19,012 | 14,512 | 14,512 | - |
| 022001 SOCIAL SECURITY | 5,119 | 3,668 | 5,481 | 4,981 | 4,981 | - |
| 022501 MEDICARE | 1,197 | 858 | 1,282 | 1,082 | 1,082 | - |
| 023001 RETIREMENT | 5,623 | 5,459 | 6,387 | 6,182 | 6,182 | - |
| 031003 PROF SERVICES-SCADA | - | 944 | 20,000 | 20,000 | 20,000 | - |
| 034103 TELEPHONE | 600 | 540 | 600 | 600 | 600 | - |
| 039051 SECURITY/ALARMS | - | 129 | - | - | - | - |
| 041002 ELECTRICITY | 90,000 | 72,837 | 100,000 | 100,000 | 100,000 | - |
| 041101 NATURAL GAS | 9,000 | 8,214 | 9,000 | 9,000 | 9,000 | - |
| 041102 HEATING OIL | 100 | 347 | 100 | 100 | 100 | - |
| 041205 WATER /SEWER FEES | 3,000 | 1,251 | 3,000 | 3,000 | 3,000 | - |
| 041309 GRIT AND GREASE REMOVAL | 8,000 | 630 | 8,000 | 8,000 | 8,000 | - |
| 043001 REPAIRS-STRUCTURAL | - | - | - | - | - | - |
| 043002 REPAIRS-ELECTRICAL | - | - | - | - | - | - |
| 043004 REPAIRS-PLUMBING | - | - | - | - | - | - |
| 043018 REPAIRS-EQUIPMENT | 50,000 | 175,129 | 50,000 | 50,000 | 50,000 | - |
| 043025 REPAIRS-BLDINGS & GROUNDS | 2,500 | 2,755 | 25,000 | 25,000 | 25,000 | - |
| 043028 MAINTENANCE | 6,000 | - | 6,000 | 6,000 | 6,000 | - |
| 043031 SCADA EQUIPMENT | - | 180 | - | - | - | - |
| 043032 GENERATOR MAINTENANCE | 18,000 | 10,981 | 18,000 | 18,000 | 18,000 | - |
| 044002 RENTAL OTHER EQUIPMENT | - | - | - | - | - | - |
| 056007 OPERATIONAL PERMITS | - | - | - | - | - | - |
| 062011 OPERATING SUPPLIES | 10,000 | 1,608 | 10,000 | 10,000 | 10,000 | - |
| 063800 MATERIALS-CHEMICALS | - | - | - | - | - | - |
| 072000 BUILDINGS | - | - | - | - | - | - |
| 073000 OTHER IMPROVEMENTS | - | - | - | - | - | - |
| 074000 MACHINERY AND EQUIPMENT | 50,000 | 1,306 | 50,000 | 50,000 | 50,000 | - |
| 086001 DEPRECIATION | 73,314 | 69,315 | 73,314 | 73,314 | 73,314 | - |
| | 416,895 | 418,603 | 473,515 | 468,110 | 468,110 | - |

**LIFT STATION MECHANIC STREET
51-751-670-65-142-492**

| | | | | | | |
|----------------------------------|----------------|----------------|----------------|----------------|----------------|---|
| 011001 REGULAR SALARIES | 5,705 | - | 5,695 | 6,584 | 6,584 | - |
| 014041 OVERTIME | 559 | - | 1,509 | 1,509 | 1,509 | - |
| 022001 SOCIAL SECURITY | 394 | - | 452 | 465 | 465 | - |
| 022501 MEDICARE | 92 | - | 105 | 105 | 105 | - |
| 023001 RETIREMENT | 433 | - | 526 | 526 | 526 | - |
| 039051 SECURITY/ALARMS | - | - | - | - | - | - |
| 039054 PROF/SERVICES-CONTRACT | 5,000 | 1,800 | 5,000 | 5,000 | 5,000 | - |
| 041002 ELECTRICITY | 150,000 | 124,441 | 150,000 | 150,000 | 150,000 | - |
| 041101 NATURAL GAS | 8,500 | 2,570 | 8,500 | 8,500 | 8,500 | - |
| 041102 HEATING OIL | - | - | - | - | - | - |
| 041205 WATER /SEWER FEES | - | - | - | - | - | - |
| 043001 REPAIRS-STRUCTURAL | - | - | - | - | - | - |
| 043002 REPAIRS-ELECTRICAL | - | - | - | - | - | - |
| 043004 REPAIRS-PLUMBING | - | - | - | - | - | - |
| 043018 REPAIRS-EQUIPMENT | 100,000 | 57,676 | 50,000 | 25,000 | 25,000 | - |
| 043025 REPAIRS-BLDINGS & GROUNDS | 12,000 | - | 12,000 | 12,000 | 12,000 | - |
| 043028 MAINTENANCE | 5,000 | 145 | 5,000 | 5,000 | 5,000 | - |
| 043031 SCADA EQUIPMENT | - | - | 2,500 | 2,500 | 2,500 | - |
| 043032 GENERATOR MAINTENANCE | 1,000 | 7,216 | 5,000 | 5,000 | 5,000 | - |
| 056007 OPERATIONAL PERMITS | - | - | - | - | - | - |
| 062011 OPERATING SUPPLIES | 4,000 | 1,928 | 4,000 | 4,000 | 4,000 | - |
| 063800 MATERIALS-CHEMICALS | 600 | - | 600 | 1,000 | 1,000 | - |
| 072000 BUILDINGS | - | - | - | - | - | - |
| 073000 OTHER IMPROVEMENTS | 15,000 | - | 15,000 | 10,000 | 10,000 | - |
| 074000 MACHINERY AND EQUIPMENT | 7,500 | - | 7,500 | 7,500 | 7,500 | - |
| 086001 DEPRECIATION | 98,553 | 92,113 | 98,553 | 140,737 | 140,737 | - |
| | 414,336 | 287,889 | 371,940 | 385,426 | 385,426 | - |

**LIFT STATION DEER STREET
51-751-670-65-143-491**

| | | | | | | |
|----------------------------------|--------|--------|--------|--------|--------|---|
| 011001 REGULAR SALARIES | 5,705 | - | 5,695 | 5,695 | 5,695 | - |
| 014041 OVERTIME | 559 | - | 1,059 | 1,059 | 1,059 | - |
| 022001 SOCIAL SECURITY | 394 | - | 452 | 452 | 452 | - |
| 022501 MEDICARE | 92 | - | 106 | 196 | 196 | - |
| 023001 RETIREMENT | 433 | - | 526 | 526 | 526 | - |
| 034103 TELEPHONE | - | - | - | - | - | - |
| 039051 SECURITY/ALARMS | - | - | - | - | - | - |
| 039054 PROF/SERVICES-CONTRACT | 300 | - | 300 | 300 | 300 | - |
| 039056 CSO MONITORING | 1,000 | - | 1,000 | 1,000 | 1,000 | - |
| 041002 ELECTRICITY | 75,000 | 54,353 | 60,000 | 60,000 | 60,000 | - |
| 041101 NATURAL GAS | - | - | - | - | - | - |
| 041102 HEATING OIL | - | - | - | - | - | - |
| 041205 WATER /SEWER FEES | - | - | - | - | - | - |
| 043001 REPAIRS-STRUCTURAL | - | - | - | - | - | - |
| 043002 REPAIRS-ELECTRICAL | - | - | - | - | - | - |
| 043004 REPAIRS-PLUMBING | - | - | - | - | - | - |
| 043018 REPAIRS-EQUIPMENT | 28,000 | - | 15,000 | 15,000 | 15,000 | - |
| 043025 REPAIRS-BLDINGS & GROUNDS | 2,000 | 186 | 2,000 | 2,000 | 2,000 | - |
| 043028 MAINTENANCE | 5,000 | - | 5,000 | 5,000 | 5,000 | - |
| 043031 SCADA EQUIPMENT | - | - | 2,500 | 2,500 | 2,500 | - |
| 043032 GENERATOR MAINTENANCE | 600 | - | 600 | 600 | 600 | - |
| 044002 RENTAL OTHER EQUIPMENT | - | (195) | - | - | - | - |
| 062001 OFFICE SUPPLIES | - | - | - | - | - | - |
| 062011 OPERATING SUPPLIES | 2,000 | 3,160 | 2,000 | 2,000 | 2,000 | - |
| 063601 DIESEL FUEL | 4,000 | - | 4,000 | 4,000 | 4,000 | - |
| 063800 MATERIALS-CHEMICALS | - | - | - | - | - | - |
| 072000 BUILDINGS | - | - | - | - | - | - |

| | FY08 | FY08 | FY09 | FY10 | FY10 | FY10 |
|--------------------------------|----------------|----------------|----------------|-----------------------|-----------------------------|--------------------------|
| | BUDGET | ACTUAL | BUDGET | DEPARTMENT REQUEST | CITY MANAGER RECOMMENDED | CITY COUNCIL APPROVED |
| 073000 OTHER IMPROVEMENTS | - | - | - | - | - | - |
| 074000 MACHINERY AND EQUIPMENT | - | - | - | - | - | - |
| 086001 DEPRECIATION | 72,556 | 63,365 | 85,645 | 85,645 | 85,645 | - |
| | 197,639 | 120,868 | 185,883 | 185,973 | 185,973 | - |

LIFT STATIONS PEASE

51-751-670-65-541-491

| | | | | | | |
|--------------------------------|---------------|---------------|---------------|---------------|---------------|---|
| 011001 REGULAR SALARIES | 5,705 | - | 22,780 | 22,780 | 22,780 | - |
| 014041 OVERTIME | 559 | - | 4,602 | 4,602 | 4,602 | - |
| 022001 SOCIAL SECURITY | 394 | - | 1,719 | 1,719 | 1,719 | - |
| 022501 MEDICARE | 92 | - | 402 | 359 | 359 | - |
| 023001 RETIREMENT | 433 | - | 1,977 | 1,977 | 1,977 | - |
| 031003 PROF SERVICES-SCADA | - | 5,095 | - | - | - | - |
| 039051 SECURITY/ALARMS | - | - | - | - | - | - |
| 041002 ELECTRICITY | 5,000 | 3,018 | 5,000 | 5,000 | 5,000 | - |
| 041101 NATURAL GAS | 3,000 | 914 | 3,000 | 3,000 | 3,000 | - |
| 041102 HEATING OIL | - | - | - | - | - | - |
| 041205 WATER /SEWER FEES | - | 218 | - | - | - | - |
| 043001 REPAIRS-STRUCTURAL | - | - | - | - | - | - |
| 043002 REPAIRS-ELECTRICAL | - | - | - | - | - | - |
| 043004 REPAIRS-PLUMBING | - | - | - | - | - | - |
| 043018 REPAIRS-EQUIPMENT | 5,000 | 101 | 5,000 | 5,000 | 5,000 | - |
| 043028 MAINTENANCE | 1,000 | - | 1,000 | 1,000 | 1,000 | - |
| 043032 GENERATOR MAINTENANCE | - | 2,686 | - | - | - | - |
| 062011 OPERATING SUPPLIES | 500 | - | 500 | 500 | 500 | - |
| 063800 MATERIALS-CHEMICALS | - | - | - | - | - | - |
| 072000 BUILDINGS | - | - | - | - | - | - |
| 073000 OTHER IMPROVEMENTS | - | - | - | - | - | - |
| 074000 MACHINERY AND EQUIPMENT | - | - | - | - | - | - |
| 086001 DEPRECIATION | 11,967 | 11,967 | 11,967 | 11,967 | 11,967 | - |
| | 33,650 | 23,999 | 57,947 | 57,904 | 57,904 | - |

COLLECTION ADMINISTRATION PORTSMOUTH

51-751-680-51-100-491

| | | | | | | |
|----------------------------------|----------------|----------------|----------------|----------------|----------------|---|
| 011001 REGULAR SALARIES | 141,146 | 115,282 | 139,321 | 164,321 | 164,321 | - |
| 011056 CAPITAL OUTLAY-LABOR | - | - | - | - | - | - |
| 012001 PART TIME SALARIES | 8,776 | 30 | 8,776 | 8,776 | 8,776 | - |
| 014041 OVERTIME | 8,598 | 3,360 | 8,467 | 10,945 | 10,945 | - |
| 022001 SOCIAL SECURITY | 9,982 | 8,175 | 9,707 | 11,292 | 11,292 | - |
| 022501 MEDICARE | 2,334 | 1,912 | 2,270 | 2,970 | 2,970 | - |
| 023001 RETIREMENT | 10,367 | 11,998 | 13,684 | 18,441 | 18,441 | - |
| 034103 TELEPHONE | 1,500 | 1,170 | 1,500 | 1,500 | 1,500 | - |
| 034104 CELLULAR PHONES | 3,000 | 937 | 3,000 | 3,000 | 3,000 | - |
| 039051 SECURITY/ALARMS | - | - | - | - | - | - |
| 039054 PROF/SERVICES-CONTRACT | 1,000 | - | 1,000 | 1,000 | 1,000 | - |
| 039055 PROF/SERV-CONTRACT-BILLAB | - | - | - | - | - | - |
| 041101 NATURAL GAS | - | - | - | - | - | - |
| 041305 HOUSEHOLD HAZARDOUS WASTE | 15,000 | 20,877 | 15,000 | 15,000 | 15,000 | - |
| 043018 REPAIRS-EQUIPMENT | 4,000 | 4,946 | 5,000 | 5,000 | 5,000 | - |
| 043024 REPAIRS-VEHICLE | 28,000 | 35,473 | 28,000 | 26,000 | 26,000 | - |
| 043025 REPAIRS-BLDINGS & GROUNDS | 500 | 248 | 500 | 500 | 500 | - |
| 043027 REPAIRS-OFFICE EQUIPMENT | - | - | - | - | - | - |
| 043028 MAINTENANCE | 500 | 2,083 | 500 | 500 | 500 | - |
| 044002 RENTAL OTHER EQUIPMENT | - | - | - | - | - | - |
| 054003 STATE CERTIFICATION | - | - | - | - | - | - |
| 054050 TRAINING-EDUCATION | 300 | 100 | 300 | 300 | 300 | - |
| 055050 PRINTING | - | 44 | - | - | - | - |
| 056001 DUES PROFESSIONAL ORGANIZ | - | - | - | - | - | - |
| 061001 FIRST AID | 180 | - | 180 | 180 | 180 | - |
| 062001 OFFICE SUPPLIES | 300 | 581 | 300 | 300 | 300 | - |
| 062011 OPERATING SUPPLIES | 1,000 | 884 | 1,000 | 1,000 | 1,000 | - |
| 065051 GROUNDSKEEPING-DIG SAFE | 2,800 | 1,791 | 2,800 | 2,800 | 2,800 | - |
| 067001 BOOKS & PERIODICALS | 500 | - | 500 | 500 | 500 | - |
| 068002 CLOTHING | 2,500 | 846 | 2,500 | 2,500 | 2,500 | - |
| 068003 PROTECTIVE CLOTHING | 500 | 75 | 500 | 500 | 500 | - |
| 068008 MATERIALS-STOCK | - | - | - | - | - | - |
| 068012 STOCK INVENTORY | - | - | - | - | - | - |
| 068030 TOOLS | 6,000 | 4,541 | 6,000 | 6,000 | 6,000 | - |
| 074000 MACHINERY AND EQUIPMENT | 7,500 | 247 | 7,500 | 7,500 | 7,500 | - |
| 086001 DEPRECIATION | 350,164 | 298,631 | 350,164 | 373,031 | 373,031 | - |
| | 606,447 | 514,230 | 608,469 | 663,856 | 663,856 | - |

COLLECTION ADMINISTRATION PEASE

51-751-680-51-500-491

| | | | | | | |
|----------------------------------|--------|--------|--------|--------|--------|---|
| 011001 REGULAR SALARIES | 22,583 | 18,641 | 22,291 | 34,291 | 34,291 | - |
| 012001 PART TIME SALARIES | 1,722 | - | - | - | - | - |
| 014041 OVERTIME | 1,376 | 181 | 1,355 | 3,655 | 3,655 | - |
| 018031 CERTIFICATION STIPEND | - | - | - | - | - | - |
| 022001 SOCIAL SECURITY | 1,510 | 11 | 1,491 | 2,272 | 2,272 | - |
| 022501 MEDICARE | 353 | 3 | 349 | 439 | 439 | - |
| 023001 RETIREMENT | 1,659 | 16 | 1,664 | 2,442 | 2,442 | - |
| 039054 PROF/SERVICES-CONTRACT | - | - | - | - | - | - |
| 041101 NATURAL GAS | - | - | - | - | - | - |
| 043018 REPAIRS-EQUIPMENT | 200 | 981 | 200 | 200 | 200 | - |
| 043025 REPAIRS-BLDINGS & GROUNDS | 50 | 46 | 50 | 50 | 50 | - |
| 054003 STATE CERTIFICATION | 25 | - | 25 | 25 | 25 | - |
| 054050 TRAINING-EDUCATION | 75 | - | 75 | 75 | 75 | - |
| 055050 PRINTING | 50 | - | 50 | 50 | 50 | - |

| | FY08 | FY08 | FY09 | FY10 | FY10 | FY10 |
|----------------------------------|---------------|---------------|---------------|-----------------------|-----------------------------|--------------------------|
| | BUDGET | ACTUAL | BUDGET | DEPARTMENT REQUEST | CITY MANAGER RECOMMENDED | CITY COUNCIL APPROVED |
| 056001 DUES PROFESSIONAL ORGANIZ | 25 | - | 25 | 25 | 25 | - |
| 061001 FIRST AID | 20 | - | 20 | 20 | 20 | - |
| 062001 OFFICE SUPPLIES | 50 | 113 | 50 | 50 | 50 | - |
| 062011 OPERATING SUPPLIES | 400 | 647 | 400 | 400 | 400 | - |
| 067001 BOOKS & PERIODICALS | 50 | - | 50 | 50 | 50 | - |
| 068002 CLOTHING | 500 | - | 500 | 500 | 500 | - |
| 068003 PROTECTIVE CLOTHING | - | - | - | - | - | - |
| 068030 TOOLS | 700 | 782 | 700 | 700 | 700 | - |
| 074000 MACHINERY AND EQUIPMENT | 500 | - | 500 | 500 | 500 | - |
| | 31,848 | 21,420 | 29,795 | 45,744 | 45,744 | - |

**COLLECTION MAINS PORTSMOUTH
51-751-680-67-100-491**

| | | | | | | |
|----------------------------------|---------------|--------------|---------------|---------------|---------------|----------|
| 011001 REGULAR SALARIES | 7,057 | 2,421 | 6,966 | 6,966 | 6,966 | - |
| 011058 BILLABLE SALARIES | - | - | - | - | - | - |
| 012001 PART TIME SALARIES | - | - | - | - | - | - |
| 014041 OVERTIME | 430 | 43 | 423 | 613 | 613 | - |
| 014053 O/T-BILLABLE | - | - | - | - | - | - |
| 022001 SOCIAL SECURITY | 472 | 145 | 466 | 586 | 586 | - |
| 022501 MEDICARE | 110 | 34 | 109 | 109 | 109 | - |
| 023001 RETIREMENT | 518 | 215 | 520 | 940 | 940 | - |
| 039052 PROF/SERV-CAPITAL OUTLAY | 400 | - | 400 | 400 | 400 | - |
| 039054 PROF/SERVICES-CONTRACT | 500 | 647 | 500 | 500 | 500 | - |
| 039055 PROF/SERV-CONTRACT-BILLAB | - | - | - | - | - | - |
| 043018 REPAIRS-EQUIPMENT | - | - | - | - | - | - |
| 068008 MATERIALS-STOCK | 500 | - | 500 | 500 | 500 | - |
| 068009 BILLABLE-STOCK MATERIAL | - | - | - | - | - | - |
| 068013 MATERIAL-BILLABLE | - | - | - | - | - | - |
| 068016 MATERIALS | 750 | 2,316 | 750 | 750 | 750 | - |
| | 10,737 | 5,821 | 10,634 | 11,364 | 11,364 | - |

**COLLECTION MAINS PEASE
51-751-680-67-500-491**

| | | | | | | |
|---------------------------------|--------------|--------------|--------------|--------------|--------------|----------|
| 011001 REGULAR SALARIES | 2,823 | 553 | 2,786 | 2,786 | 2,786 | - |
| 011056 CAPITAL OUTLAY-LABOR | - | - | - | - | - | - |
| 011059 BILLABLE CAP OUTLAY SAL | - | - | - | - | - | - |
| 014041 OVERTIME | 172 | 30 | 169 | 346 | 346 | - |
| 014057 O/T BILLABLE CAP OUTLAY | - | - | - | - | - | - |
| 022001 SOCIAL SECURITY | 189 | 36 | 186 | 186 | 186 | - |
| 022501 MEDICARE | 44 | 8 | 44 | 62 | 62 | - |
| 023001 RETIREMENT | 207 | 51 | 208 | 291 | 291 | - |
| 039052 PROF/SERV-CAPITAL OUTLAY | - | - | - | - | - | - |
| 068008 MATERIALS-STOCK | 500 | - | 500 | 500 | 500 | - |
| 068016 MATERIALS | 500 | 436 | 500 | 500 | 500 | - |
| 086001 DEPRECIATION | - | - | - | - | - | - |
| | 4,435 | 1,114 | 4,393 | 4,671 | 4,671 | - |

**COLLECTION-INTRCPTR PORTSMOUTH
51-751-680-68-100-491**

| | | | | | | |
|----------------------------------|----------------|---------------|----------------|----------------|----------------|----------|
| 011001 REGULAR SALARIES | 78,174 | 28,863 | 77,042 | 77,042 | 77,042 | - |
| 011056 CAPITAL OUTLAY-LABOR | 9,337 | - | 9,337 | 12,437 | 12,437 | - |
| 011058 BILLABLE SALARIES | - | - | - | - | - | - |
| 011059 BILLABLE CAP OUTLAY SAL | - | - | - | - | - | - |
| 012001 PART TIME SALARIES | - | 125 | - | - | - | - |
| 014041 OVERTIME | 5,331 | 1,862 | 5,249 | 6,035 | 6,035 | - |
| 014053 O/T-BILLABLE | - | - | - | - | - | - |
| 014056 O/T CAPITAL OUTLAY LABOR | - | - | - | - | - | - |
| 014057 O/T BILLABLE CAP OUTLAY | - | - | - | - | - | - |
| 022001 SOCIAL SECURITY | 5,852 | 2,651 | 5,777 | 6,377 | 6,377 | - |
| 022501 MEDICARE | 1,369 | 620 | 1,351 | 1,351 | 1,351 | - |
| 023001 RETIREMENT | 6,427 | 3,883 | 6,446 | 7,246 | 7,246 | - |
| 039052 PROF/SERV-CAPITAL OUTLAY | 2,500 | - | 2,500 | 2,500 | 2,500 | - |
| 039053 PROF/SERV-CAP OUTLAY BILL | - | - | - | - | - | - |
| 039054 PROF/SERVICES-CONTRACT | 2,000 | 867 | 2,000 | 2,000 | 2,000 | - |
| 039055 PROF/SERV-CONTRACT-BILLAB | - | - | - | - | - | - |
| 043018 REPAIRS-EQUIPMENT | 500 | - | 500 | 500 | 500 | - |
| 043024 REPAIRS-VEHICLE | - | - | - | - | - | - |
| 043028 MAINTENANCE | 250 | 18,050 | 250 | 250 | 250 | - |
| 044002 RENTAL OTHER EQUIPMENT | 10,000 | 1,260 | 10,000 | 10,000 | 10,000 | - |
| 068008 MATERIALS-STOCK | 15,000 | 42 | 15,000 | 15,000 | 15,000 | - |
| 068009 BILLABLE-STOCK MATERIAL | - | - | - | - | - | - |
| 068010 CAP OUTLAY-STOCK MATERIAL | 10,000 | - | 10,000 | 10,000 | 10,000 | - |
| 068011 BILL CAP OUTLAY STOCK MAT | - | - | - | - | - | - |
| 068013 MATERIAL-BILLABLE | - | - | - | - | - | - |
| 068014 MATERIALS-CAPITAL OUTLAY | 4,000 | - | 4,000 | 4,000 | 4,000 | - |
| 068015 MATERIALS-CAP OUTLAY BILL | - | - | - | - | - | - |
| 068016 MATERIALS | 30,000 | 6,004 | 30,000 | 30,000 | 30,000 | - |
| 068030 TOOLS | - | - | - | - | - | - |
| 077000 CAPITAL OUTLAY OVERHEAD | 14,743 | - | 14,743 | 14,743 | 14,743 | - |
| 086001 DEPRECIATION | - | - | - | - | - | - |
| | 195,483 | 64,227 | 194,195 | 199,481 | 199,481 | - |

**COLLECTION-INTRCPTR PEASE
51-751-680-68-500-491**

| | | | | | | |
|-----------------------------|-------|-------|-------|-------|-------|---|
| 011001 REGULAR SALARIES | 4,234 | 2,928 | 4,180 | 4,180 | 4,180 | - |
| 011056 CAPITAL OUTLAY-LABOR | - | - | - | - | - | - |

| | FY08 | FY08 | FY09 | FY10 | FY10 | FY10 |
|---------------------------------------|------------------|------------------|------------------|-----------------------|-----------------------------|--------------------------|
| | BUDGET | ACTUAL | BUDGET | DEPARTMENT REQUEST | CITY MANAGER RECOMMENDED | CITY COUNCIL APPROVED |
| 014041 OVERTIME | 258 | - | 254 | 284 | 284 | - |
| 022001 SOCIAL SECURITY | 283 | 173 | 280 | 570 | 570 | - |
| 022501 MEDICARE | 66 | 40 | 65 | 65 | 65 | - |
| 023001 RETIREMENT | 311 | 256 | 312 | 842 | 842 | - |
| 039052 PROF/SERV-CAPITAL OUTLAY | - | - | - | - | - | - |
| 062011 OPERATING SUPPLIES | - | - | - | - | - | - |
| 068008 MATERIALS-STOCK | 1,000 | - | 1,000 | 1,000 | 1,000 | - |
| 068015 MATERIALS-CAP OUTLAY BILL | - | - | - | - | - | - |
| 068016 MATERIALS | 4,000 | 171 | 4,000 | 4,000 | 4,000 | - |
| | 10,152 | 3,568 | 10,091 | 10,941 | 10,941 | - |
| COLLECTION-LATERALS PORTSMOUTH | | | | | | |
| 51-751-680-69-100-491 | | | | | | |
| 011001 REGULAR SALARIES | 15,526 | 71,601 | 15,325 | 16,325 | 16,325 | - |
| 011056 CAPITAL OUTLAY-LABOR | - | - | - | - | - | - |
| 011058 BILLABLE SALARIES | - | - | - | - | - | - |
| 012001 PART TIME SALARIES | - | 517 | - | - | - | - |
| 014041 OVERTIME | 946 | 5,755 | 931 | 1,037 | 1,037 | - |
| 014053 O/T-BILLABLE | - | - | - | - | - | - |
| 022001 SOCIAL SECURITY | 1,038 | 4,619 | 1,025 | 1,105 | 1,105 | - |
| 022501 MEDICARE | 243 | 1,080 | 240 | 240 | 240 | - |
| 023001 RETIREMENT | 1,140 | 6,759 | 1,144 | 1,124 | 1,124 | - |
| 039052 PROF/SERV-CAPITAL OUTLAY | - | 70 | - | - | - | - |
| 039054 PROF/SERVICES-CONTRACT | - | 672 | - | - | - | - |
| 039055 PROF/SERV-CONTRACT-BILLAB | - | - | - | - | - | - |
| 068008 MATERIALS-STOCK | 500 | - | 500 | 500 | 500 | - |
| 068009 BILLABLE-STOCK MATERIAL | - | - | - | - | - | - |
| 068013 MATERIAL-BILLABLE | - | - | - | - | - | - |
| 068016 MATERIALS | 10,000 | - | 10,000 | 10,000 | 10,000 | - |
| 074000 MACHINERY AND EQUIPMENT | 5,000 | - | 5,000 | 5,000 | 5,000 | - |
| | 34,393 | 91,072 | 34,165 | 35,331 | 35,331 | - |
| COLLECTION-LATERALS PEASE | | | | | | |
| 51-751-680-69-500-491 | | | | | | |
| 011001 REGULAR SALARIES | 1,411 | 2,364 | 1,393 | 3,455 | 3,455 | - |
| 011056 CAPITAL OUTLAY-LABOR | - | - | - | - | - | - |
| 014041 OVERTIME | 86 | - | 85 | 85 | 85 | - |
| 022001 SOCIAL SECURITY | 94 | 138 | 93 | 93 | 93 | - |
| 022501 MEDICARE | 22 | 32 | 22 | 22 | 22 | - |
| 023001 RETIREMENT | 104 | 207 | 104 | 314 | 314 | - |
| 068008 MATERIALS-STOCK | 400 | - | 400 | 400 | 400 | - |
| 068016 MATERIALS | 600 | - | 600 | 600 | 600 | - |
| | 2,717 | 2,742 | 2,697 | 4,969 | 4,969 | - |
| CAPITAL PROJECTS | | | | | | |
| 51-751-950-100-491 | | | | | | |
| 076006 VEHICLES-SEWER | - | - | - | - | - | - |
| 073003 NON-SRF PROJECT | - | - | - | - | - | - |
| | - | - | - | - | - | - |
| TOTAL SEWER DIVISION | 7,946,493 | 6,680,768 | 8,795,019 | 8,395,569 | 8,395,569 | - |