

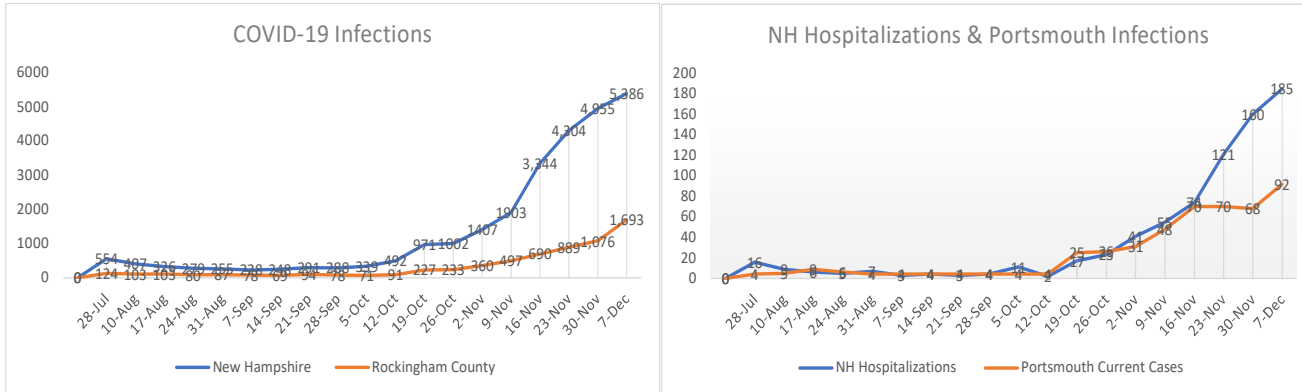
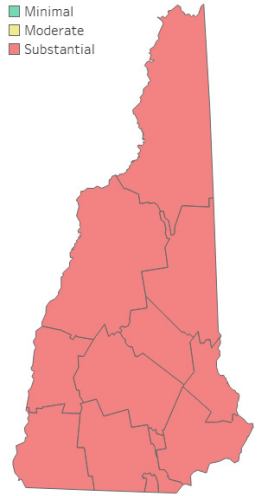
COVID-19 DASHBOARD 12/7/20

	This Wk	Last Wk	Cumulative	Deaths
NH Positivity	9.0%	5.2%		
Rockingham Positivity	10.3%	7.0%		
NH	5,386	4,955	25,816	566
Rockingham	1,693	1,076	6,196	116
Portsmouth	92	68	405	

Positivity data source: NH: NH DHHS: <https://www.nh.gov/covid19/>
 Psotivity Rockingham County: Johns Hopkins: <https://covidactnow.org/us/nh?s=1304314>

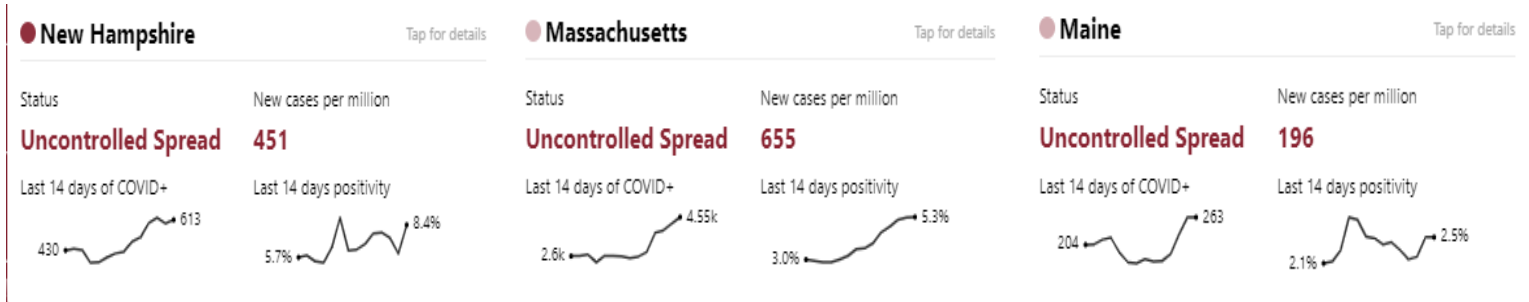
Community Transmission

- Minimal
- Moderate
- Substantial

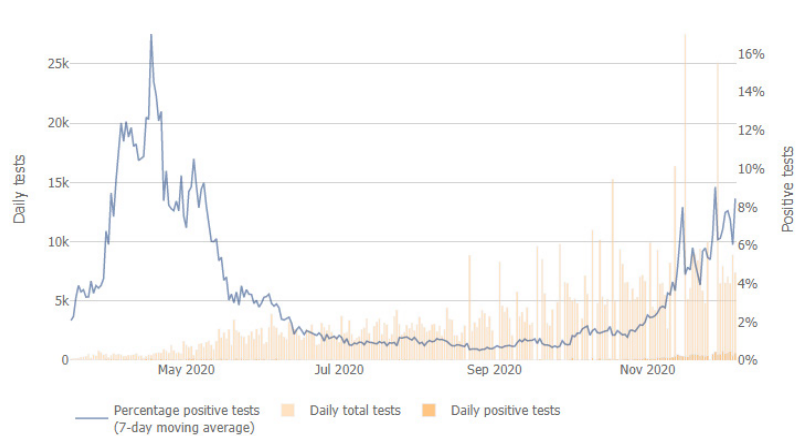
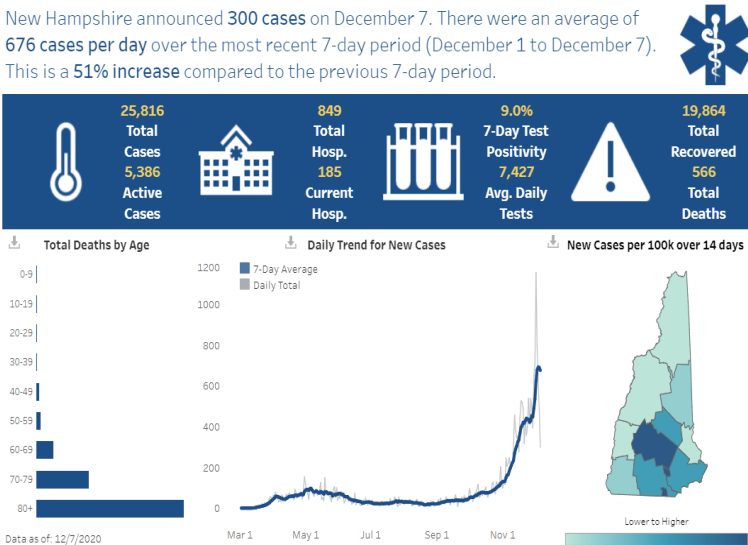


NH & Rockingham County Cases by Week

NH Hospitalizations & Portsmouth Resident Cases by Week



Data and graphs above show rolling 14-day averages, based on reporting from CDC, the Covid Tracking Project, and state sources, aggregated at <https://www.covidexitstrategy.org/>



The graph above shows the total daily number of COVID-19 tests reported in NH, and of those tests, how many were positive each day. The trend line in blue shows the average percentage of tests that were positive over the last 7 days.

Note: DHHS changed the map above to show the number of new cases per 100k people over the last 14 days to create shading gradients between counties

Send questions to the CRTF Health Subcommittee via hotline@cityofportsmouth.com
 Johns Hopkins COVID Tracker: <https://coronavirus.jhu.edu/region/us/new-hampshire>
 NH (interactive map, by town): <https://www.nh.gov/covid19/dashboard/summary.htm>
 US MAP (right) source: <https://www.nytimes.com/interactive/2020/us/coronavirus-us-cases.html#map>
 Current US Hot Spots (at right) Darker shading = more cases. On Nov. 18, the color scale on the hot spots map was expanded to reflect the new record rates of infection. The map was also changed so that areas with very low population density are now shaded.

