

South Cemetery Tree Plantings

2023

Proprietors	Harmony Grove & Sagamore
(2) Dawn Redwoods	Shumard Oak
(2) Sugar Maples	White Oak
Red Maple "Brandywine"	Colorado Blue Spruce
American Chestnut	Black Walnut
Seven Son	Sourwood

2022

American Elm "Princeton"	American Elm "Frontier"
Persian Ironwood	European Hornbeam
Kentucky Coffeetree	Magnolia "Elizabeth"
Tamarack	Tamarack
	Norway Spruce
	European Copper Beech

In-Ground, Ready for 2024

Sassafras, Eastern Redbud, Striped Maple, Tupelo,
Japanese Umbrellapine, Silver Maple, America Elm "Triumph"



Good Plants for Feeding the Bees

TREES

- Aesculus x carnea** - Horsechestnut *Pink Horsechestnut*
Amelanchier spp.* - Serviceberry/Shadblow
*Catalpa speciosa** *Northern Catalpa*
*Cercis canadensis** - Eastern Redbud
*Cladrastis kentuckea** - American Yellowwood
Cornus mas - Corneliancherry
Heptacodium miconioides - Seven Son flower
*Ilex opaca** - American Holly
Koelreuteria paniculata - Goldenrain Tree
*Liriodendron tulipifera** - Tulip Tree
Malus spp. - Apple, including crabapple
*Nyssa sylvatica** - Tupelo/Black Gum
*Oxydendrum arboreum** - Sourwood
Prunus spp. - Cherry, including weeping
Syringa reticulata - Japanese Lilac Tree
Tilia cordata - Little-leaf Linden

SHRUBS

- Aesculus parviflora** - Bottlebrush Buckeye
*Arctostaphylos uva-ursi** - Bearberry
Buddleia x davidii - Butterfly Bush
*Campsis radicans** - Trumpetvine
*Ceanothus americanus** - New Jersey Tea
*Cephalanthus occidentalis** - Buttonbush
Chaenomeles speciosa - Flowering Quince
*Clethra alnifolia** - Summersweet
Corylopsis spicata - Spike Winterhazel
*Diervilla lonicera** - Bush Honeysuckle
Deutzia gracilis - Deutzia
Fothergilla spp.* - Fothergilla
Hydrangea paniculata - Panicle Hydrangea
Hypericum spp.* - St. John's Wort
*Itea virginica** - Virginia Sweetspire
Ilex spp.* (evergreen and deciduous) - Inkberry and Winterberry
Philadelphus spp. - Mockorange
*Physocarpus opulifolius** - Ninebark
*Prunus maritima** - Beach Plum
Rosa rugosa - Beach Rose
*Salix discolor** - Pussywillow
*Sambucus canadensis** - Elderberry
Vaccinium spp.* - Blueberry (Highbush and Lowbush)
Viburnum x burkwoodii - Burkwood Viburnum

South Cemetery Tree Plantings

2017-2021

Sourwood

American Swett Gum (2)

Seven Sons

Golden Chain (2)

Golden Rain

Carolina Silver Bell (pink)

Little Leaf Linden

Fort McNair "Ruby" Chestnut

Yellowwood

Tulip Tree (5)

Black Tupelo

Northern Catalpa

Hackberry

Serbian Spruce

Dawn Redwood (2)

Weeping Willow

Swamp White Oak

Bald Cypress

Corkscrew Willow

River Birch (single stem)

Katsuratree (Red Fox)

Japanese Stewartia

Golden Larch

American Elm (2) Princeton & Frontier

Red Maple (4) (October Glory, Autumn Blaze, (2) Acer rubrum

Dogwood (Cornus mas)

Redbud (2)

Weeping Katsuratree

Cucumber Magnolia

European Copper Beech (2)

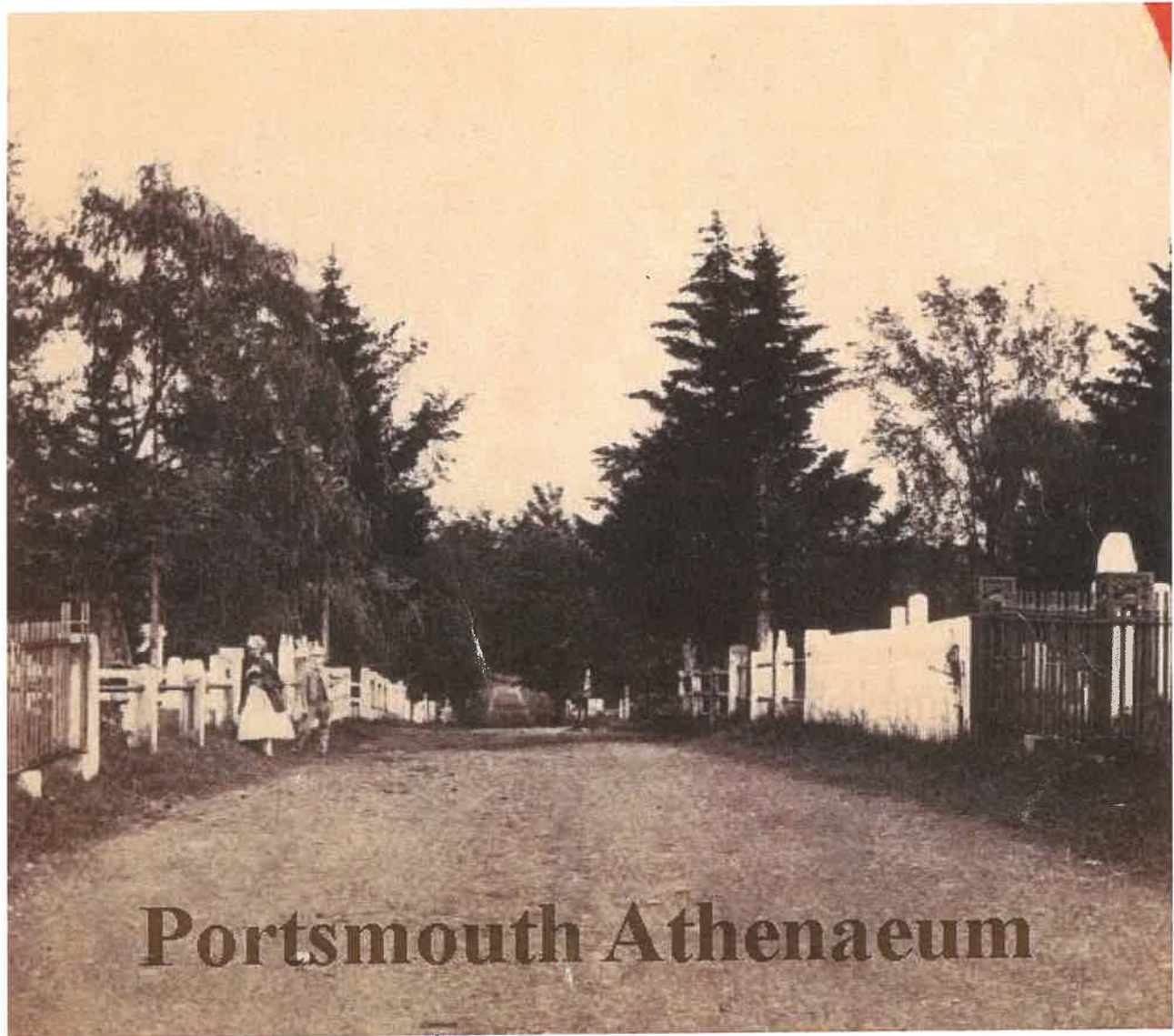
London Plane

Norway Spruce

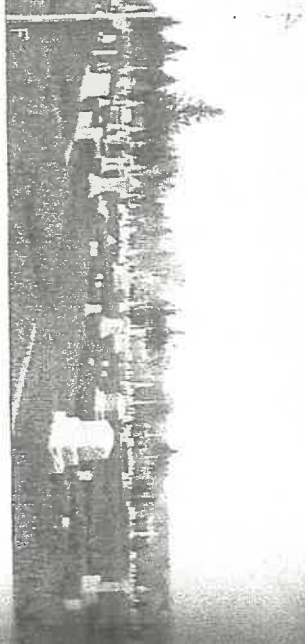
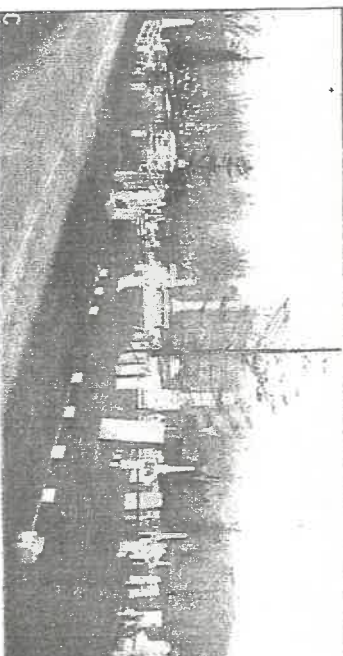
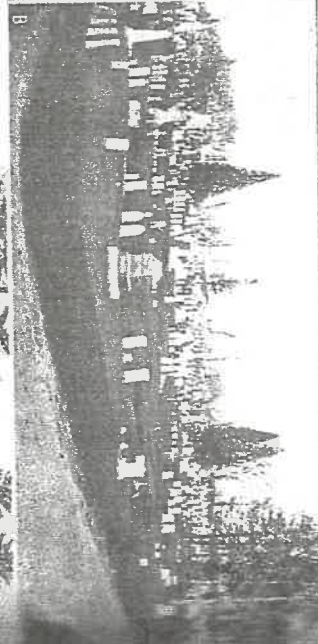
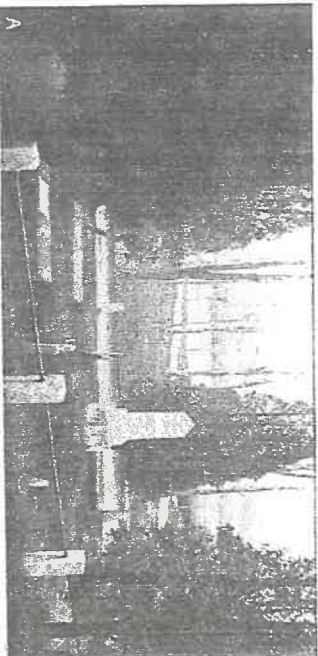
European Hornbeam "Fastigiata"

Kentucky Coffeetree

Persian Ironwood



1880



A. OLD CUTT TOMBS, FROM GREEN STREET GROUNDS.
B-C-D-E-F. HARMONY GROVE AND SAGAMORE CEMETERIES.

1902

tion in Portsmouth. In the "Ra-
hied a poem by Albert Leighton on
gully. The view of Proprietors
hat "Gullows Hill" is the place w
killed; the gullows standing ne
portion represented by this pic
he it shows part of the pond, or
which Ruth was buried, and it
in the first interment made in this

W. DENNING WENTWORTH

Turning easterly around the S
into Little Harbor Road, and ad
point, at its terminus, is the Gov
Wentworth mansion. Longfellow, i
th," in "Tales of a Wayside In
part:

"It was a pleasant mansion, an abode
sear and yet hidden from the great hi
registered among trees, a noble pile
heavenly and colonial in its style.
Within, unworldly splendors met the e
carpet and floors of oak, and tapestry
carved chimney-pieces, where on bra
beveled and roared the Christmas fire,
doors opening into darkness onward
Mysterious passages, and flights of air
And on the walls, in heavy gilded fra
The ancestral Wentworths with Old-S

This house was built in 1750
Wentworth while he was Governor
in 1741 at the time of the final sep
in from Massachusetts, in 1741
mission until 1767, at which time
his own administration, he was si



Portsmouth Athenaeum

1948



Portsmouth Athenaeum

1949

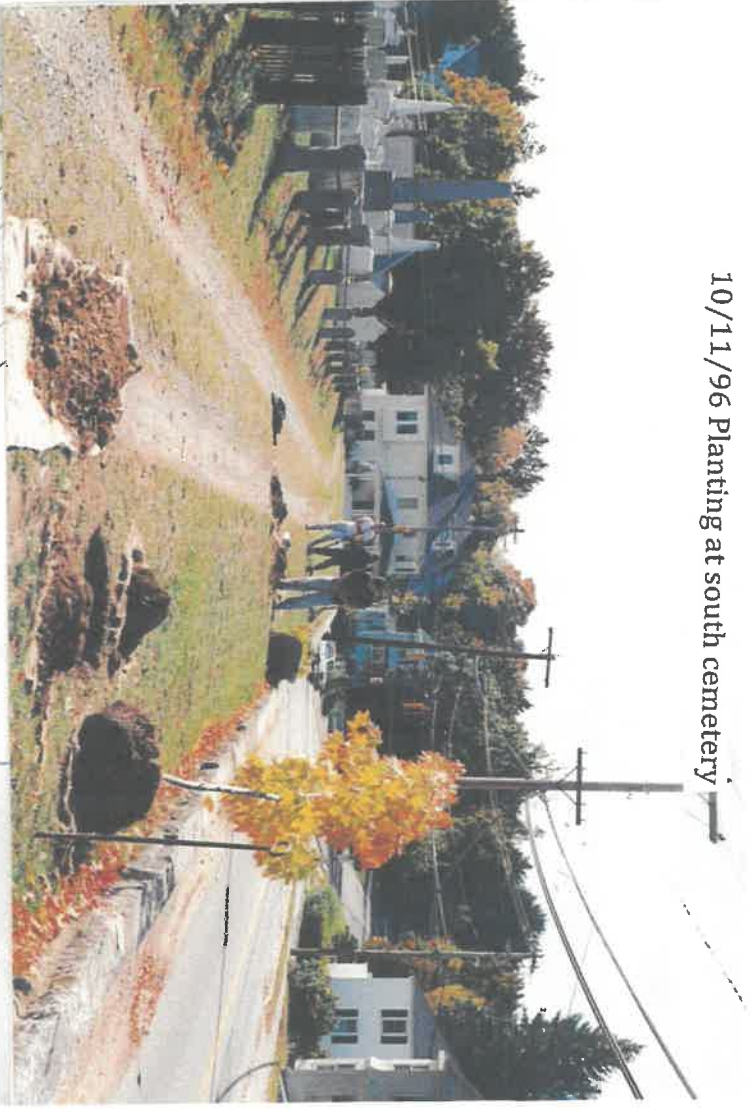


1954

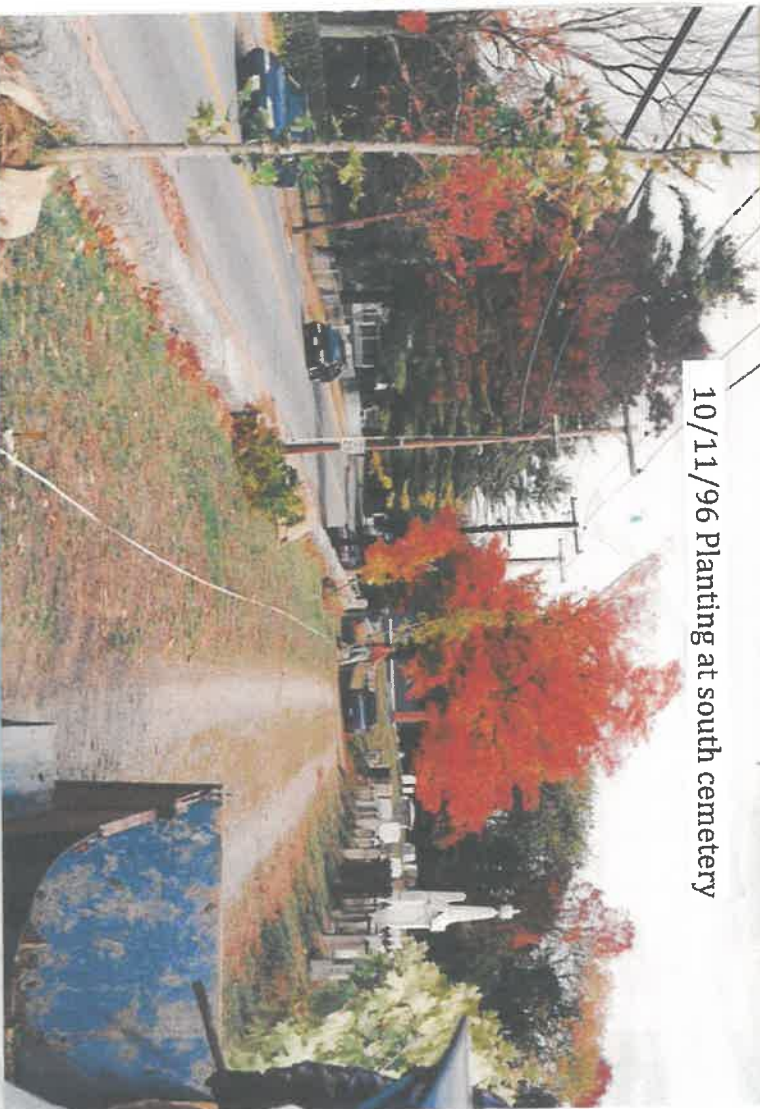
10/10/97 tree planting so cemetery



10/11/96 Planting at south cemetery



10/11/96 Planting at south cemetery



10/11/96 Planting at south cemetery



10/11/97 tree planting South cemetery



7/8/01 trees previously planted at South cemetery



10/20/93 trees dug out at tree farm for transplanting



10/13/95 Trees ready for transplanting



10/20/93 trees dug out at tree farm for transplanting



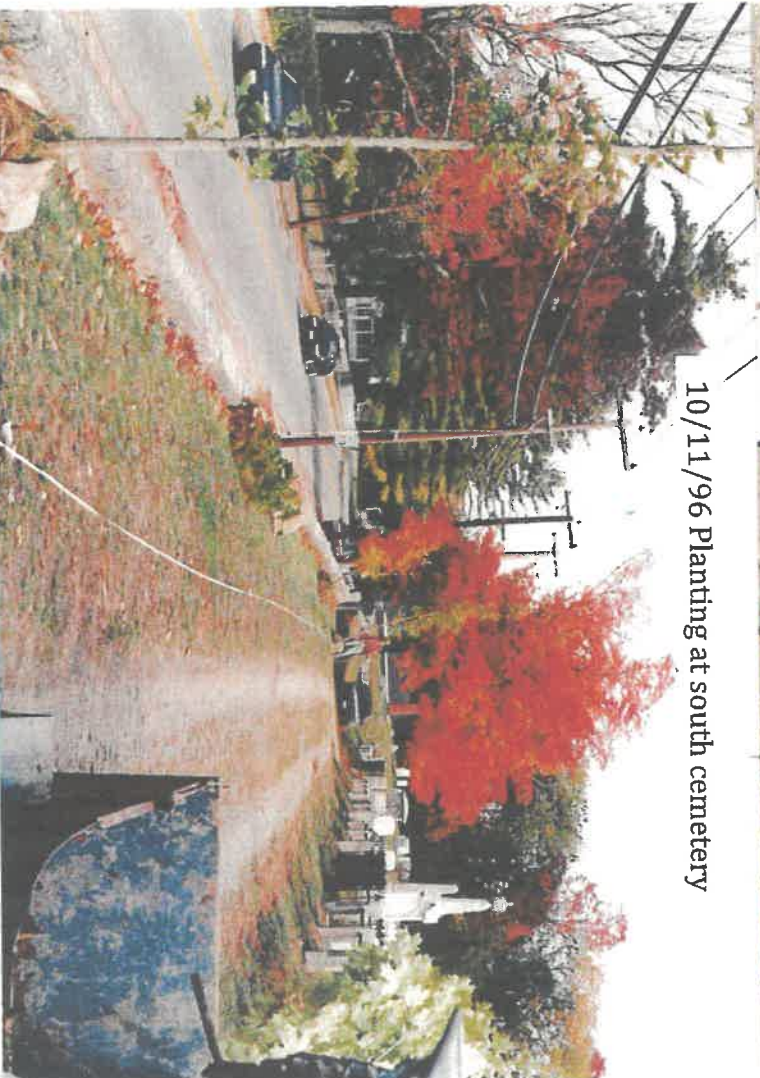
10/10/97 tree planting so cemetery



10/11/96 Planting at south cemetery



10/11/96 Planting at south cemetery

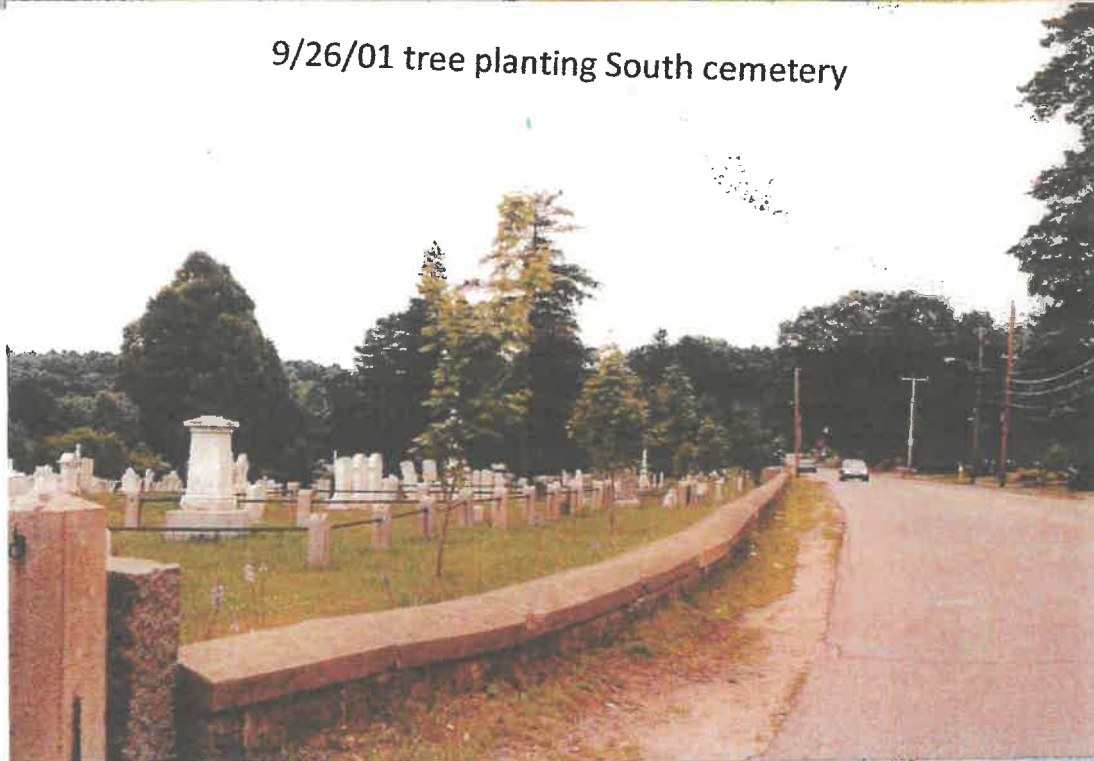


10/11/96 Planting at south cemetery

8/24/01 trees previously planted at South cemetery



9/26/01 tree planting South cemetery



8/26/01 trees previously planted at South cemetery

