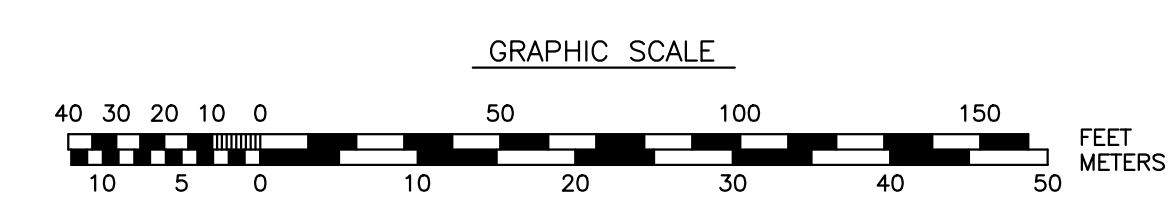
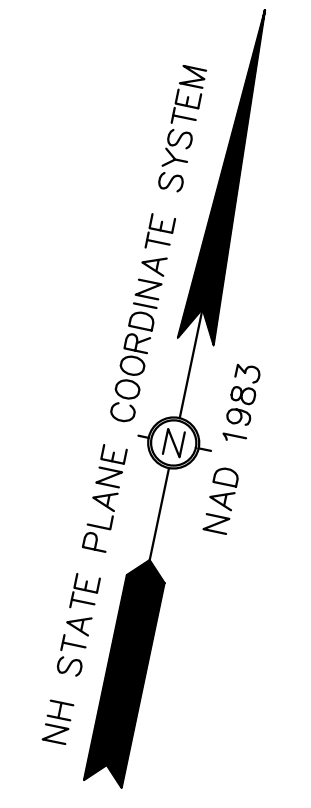


LEGEND

- PHASE 1 SIDEWALK (COMPLETED 2023)
- PROPOSED PHASE 2 SIDEWALK (2024)
- PROPOSED PHASE 2 SIDEWALK REMOVAL (NO REPLACEMENT)
- TREE TO BE REMOVED



DEPARTMENT OF
PUBLIC WORKS
CITY OF PORTSMOUTH, NH
680 PEVERLY HILL ROAD
603-427-1530

A	ISSUED FOR T&G MEETING ON 10/11/23	MRB	09/25/23
NO.	REVISIONS	APP'D	DATE
PROJECT: 2024 NEIGHBORHOOD SIDEWALK PROJECT			
TITLE: PANNAWAY MANOR PHASE 2 - TREE REMOVAL PLAN			
DRAWING SCALE:	AS SHOWN	DATE:	FEBRUARY 2022
PROJECT NO.:	XXXX	SHEET:	C-200
APPROVED BY:	MRB		



Willard Ave - Portsmouth, NH

Tree Impact Plan



CMA
ENGINEERS
Portsmouth NH
Manchester NH
Portland ME
cmaengineers.com

Legend			
	Proposed Pavement		Tree to Remain
	Driveways		Tree to be Monitored During Construction
	Proposed Sidewalks		Tree to be Removed
	Proposed Grass Area		



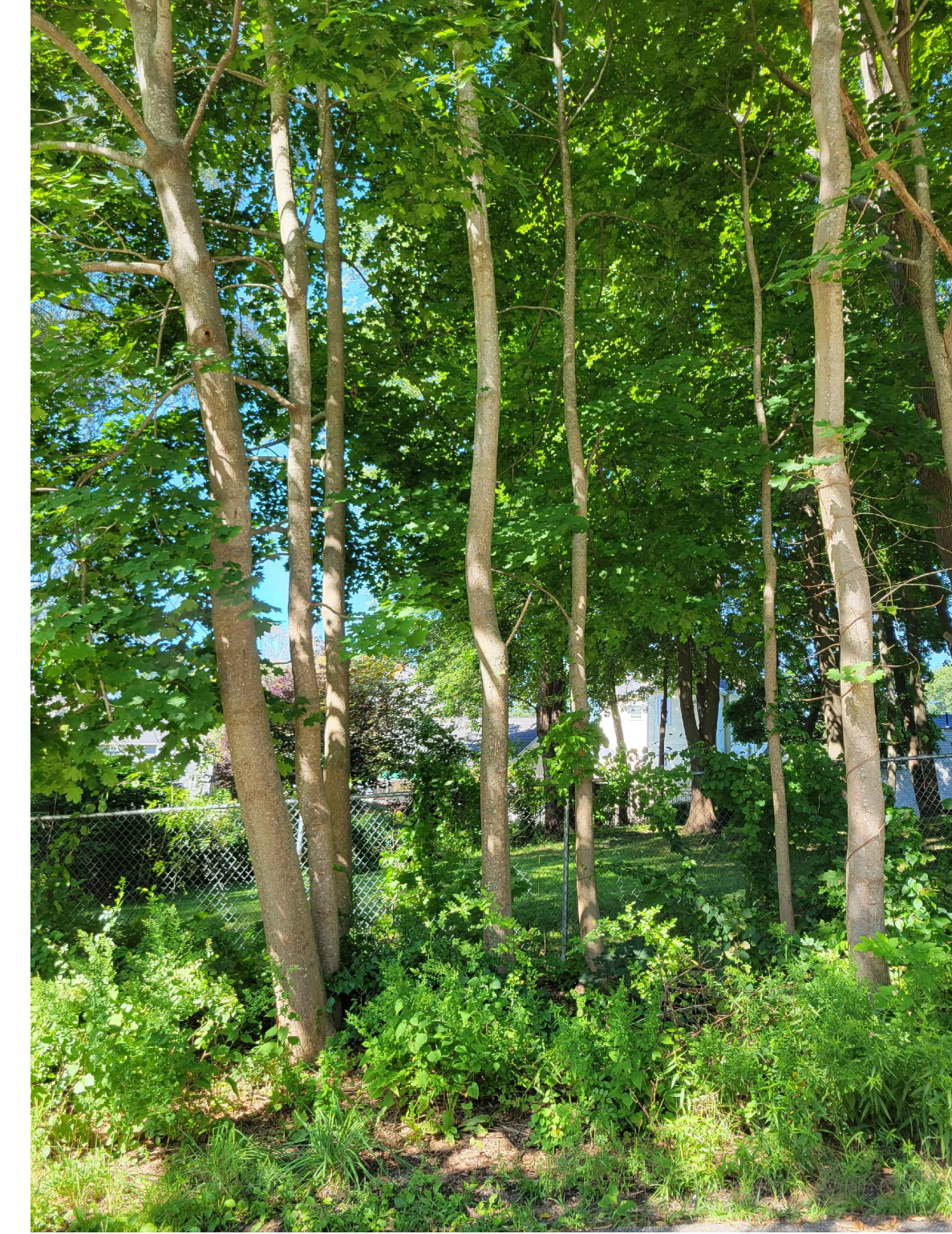
228 Willard Ave
Remove Tree



111 Willard Ave
Remove Tree



176 Orchard Street
Protect Tree
(Remove if Necessary)



179 Orchard Street
Remove Trees (6) and Shrub



91 Orchard Street
Remove Tree



62 Orchard Street
(West)
Remove Tree



62 Orchard Street
(East)
Remove Tree

City of Portsmouth, New Hampshire Department of Public Works		date: September 2023	designed by: WWG	drawing no. 1	
Willard Ave Area Improvement Project		project no: 1211	drawn by: WWG	revision	
Tree Impact Photos		checked by: WAB	approved by: PAC	no.	
		scale:		date	
		CMA ENGINEERS Civil/Environmental/Structural		by	
		Portsmouth, NH • Manchester, NH • Portland, ME 603/431-6196 • 603/627-0708 • 207/641-4223		date	
		c m a e n g i n e e r s . c o m		date	
				sheet: 1 of 1	